

# Arteor™ monobloc

mechanical switches, triple pole switch



5720 39



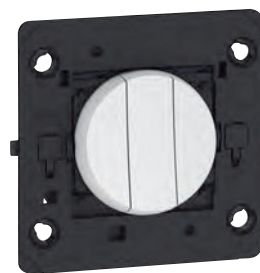
5725 45



5720 61



5731 74



5730 93

Surround plates selection charts **p. 32-35**

Mechanisms supplied complete with incorporated support frames and rocker plates  
 Rocker plates in white or magnesium, square or round versions  
 Suitable for 25 mm 1 gang boxes  
 To be equipped with surround plates (p. 32-35)

### Pack Cat. Nos. Switches - square version

Pack	Cat. Nos.	Switches - square version
10 10	5720 39 5725 39	<b>10 AX - 250 V<math>\sim</math></b> 1 gang intermediate switch ○ White ● Magnesium
10 10	5720 12 5725 12	<b>20 AX - 250 V<math>\sim</math></b> 2 way - 1 gang ○ White ● Magnesium
10 10	5720 45 5725 45	2 way - 2 gang ○ White ● Magnesium
10 10	5720 61 5725 61	2 way - 3 gang ○ White ● Magnesium
5 5	5720 58 5725 58	<b>Triple pole switch</b> ○ White ● Magnesium

### Pack Cat. Nos. Switches - round version

Pack	Cat. Nos.	Switches - round version
10 10	5730 64 5731 64	<b>10 AX - 250 V<math>\sim</math></b> 1 gang intermediate switch ○ White ● Magnesium
10 10	5730 29 5731 29	<b>20 AX - 250 V<math>\sim</math></b> 2 way - 1 gang ○ White ● Magnesium
10 10	5730 74 5731 74	2 way - 2 gang ○ White ● Magnesium
10 10	5730 93 5731 93	2 way - 3 gang ○ White ● Magnesium