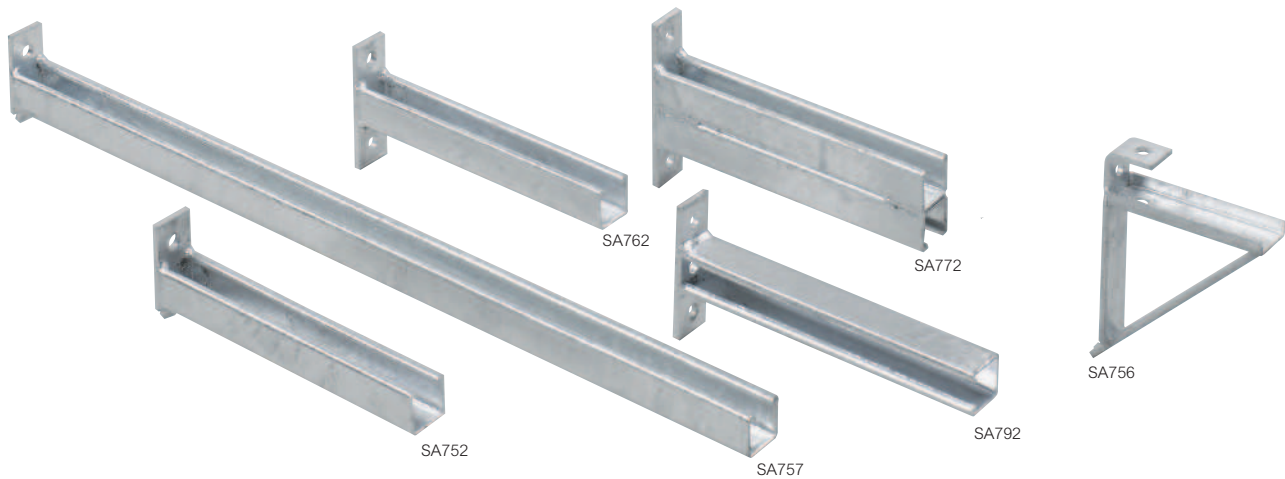


# Swiftrack channel support system

## cantilever arms

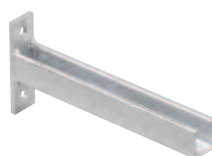


Dimensions and technical information **p. 108-109**

Pack	Cat. Nos.	Cantilever arms
		In addition to the cantilever arms listed, there are many other specialist support brackets for use with cable tray. These are detailed in the relevant sections in this catalogue.
		<b>Cantilever arms</b> Requires only one bolt for quick fixing and is used with open face at the top. For technical information, <b>p. 108</b>
1	SA750	150 mm
1	SA751	225 mm
1	SA752	300 mm
1	SA753	450 mm
1	SA754	600 mm
1	SA755	750 mm
1	SA757	900 mm
		<b>Cantilever arms, universal</b> Two bolt fixing. Can be used with open face at the top or bottom. For technical information, <b>p. 108</b>
1	SA760	150 mm
1	SA761	225 mm
1	SA762	300 mm
1	SA763	450 mm
1	SA764	600 mm
1	SA765	750 mm
1	SA766	900 mm
		<b>Cantilever arms, side</b> Two bolt fixing. Can be used with open face on the left or right. For technical information, <b>p. 108</b>
1	SA790	150 mm
1	SA791	225 mm
1	SA792	300 mm
1	SA793	450 mm
1	SA794	600 mm
1	SA795	750 mm
1	SA796	900 mm

Pack	Cat. Nos.	Cantilever arms (continued)
		<b>Cantilever arms, double channel</b> Two bolt fixing with extra support. Open face top and bottom. For technical information, <b>p. 108</b>
1	SA770	150 mm
1	SA771	225 mm
1	SA772	300 mm
1	SA773	450 mm
1	SA774	600 mm
1	SA775	750 mm
1	SA776	900 mm
1	SA756	<b>Cantilever arm bracket</b> Used to provide extra support to a horizontal run of channel. For technical information, <b>p. 109</b>
		<b>Cantilever arms</b> Used to support horizontal runs of tray on to a vertical length of channel. For technical information, <b>p. 94-95</b>
1	LCA 50 F	50 mm
1	LCA 75 F	75 mm
1	LCA 100 F	100 mm
1	LCA 150 F	150 mm
1	LCA 225 F	225 mm
1	LCA 300 F	300 mm
1	LCA 450 F	450 mm
1	LCA 600 F	600 mm
1	LCA 750 F	750 mm
1	LCA 900 F	900 mm

Non-standard cantilever arms available to special order  
Contact us on **+44 (0) 345 605 4333**



Key : Replace the letters shown in red with your choice from the following options :

- F = Finish : G (hot dip galvanised after manufacture), D (deep galvanised), PG (pre-galvanised steel), S (stainless steel), E (powder coated black RAL 9005)