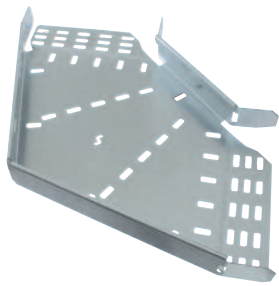
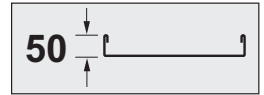
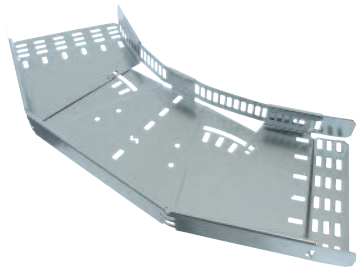


Swifts® SRF heavy duty return flange cable tray

fittings



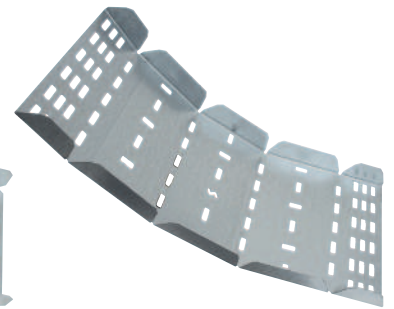
90° flat bend
SRFB 225 PG



Adjustable bend
SRFAB 225 PG



Inside riser
SRFIR 225 PG



Adjustable riser
SRFAR 225 PG

Selection charts **p. 14-15**

Dimensions and technical information : lengths **p. 64** ; fixing options **p. 68** ; fittings **p. 69-83**

Design notes **p. 118**

Loading graphs **p. 64**



Pack	Cat. Nos.	Fittings
1	SRFB W F	All fittings have integral fishplates No couplers required 90° bends For technical information, p. 70-71
1	SRFB W A F	60°, 45° and 30° bends For 75 - 300 mm wide, adjustable bends can also be used For technical information, p. 70-71
1	SRFAB W F	Adjustable bends 75 - 300mm wide only For technical information, p. 72-73
1	SRFIR W F	90° inside riser For technical information, p. 74
1	SRFIR W A F	60°, 45°, 30° inside riser For technical information, p. 74
1	SRFOR W F	90° outside riser For technical information, p. 74
1	SRFOR W A F	60°, 45°, 30° outside riser For technical information, p. 74

Pack	Cat. Nos.	Fittings (continued)
1	SRFAR W F	Adjustable risers (inside or outside) For technical information, p. 75
1	SRFAXR W F	Extra long adjustable risers (inside or outside) For technical information, p. 76
1	SRFT W F	Equal tees For technical information, p. 77
1	SRFUT W B F	Unequal tees For technical information, p. 78-79
1	SRFX W F	4 way crosspieces For technical information, p. 80
1	SRFR W K F	Straight reducers For technical information, p. 81
1	SRFMRFR W F	SRF to MRF straight reducers For technical information, p. 82



Additional gauges and finishes available to special order

Contact us on +44 (0) 345 605 4333



Key : selecting SRF heavy duty fittings. Replace the letters shown in red with your choice from the following options :

W = Widths (mm) : 75, 100, 150, 225, 300, 450, 600, 750, 900

A = Angle (°) : 60, 45 and 30 (90 does not need to be included in order code)

B = Branch width (mm) : 75, 100, 150, 225, 300, 450, 600, 750

F = Finish : **G** (hot dip galvanised after manufacture),

D (deep galvanised), **PG** (pre-galvanised steel),

S (stainless steel), **E** (powder coated black RAL 9005)

K = Narrowed width when using a reducer (mm) :

75, 100, 150, 225, 300, 450, 600, 750