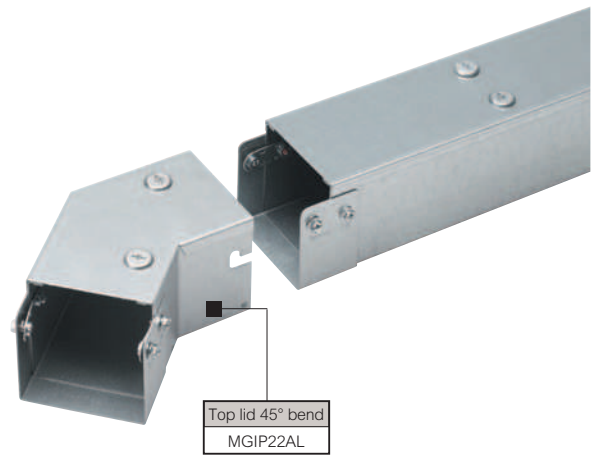


Top lid 90° bend
MGIP22AGL



Top lid 45° bend
MGIP22AL

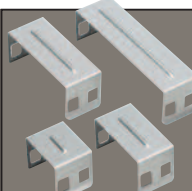


Selection chart (p. 8-9)
Order information (p. 10)
Standards and quality assessment (p. 20)
Dimensions and technical information (p. 26-27)

Pack	Cat. Nos.	Fittings
		IP4X 90° bends All bends are supplied with lid, lid fixings and a coupler pre-fitted with screws backed off, ready to accept slotted trunking
1	MGIP Z AGL	1 compartment
1	MGIP Z AGL2C	2 compartment
1	MGIP Z AGL3C	3 compartment
		IP4X top lid 90° bends – gusset
1	MGIP Z AGL	1 compartment
1	MGIP Z AGL2C	2 compartment
1	MGIP Z AGL3C	3 compartment
		IP4X top lid 90° bends – square
1	MGIP Z ASL	1 compartment
1	MGIP Z ASL2C	2 compartment
1	MGIP Z ASL3C	3 compartment
		IP4X inside lid 90° bends – gusset
1	MGIP Z BGL	1 compartment
1	MGIP Z BGL2C	2 compartment
1	MGIP Z BGL3C	3 compartment
		IP4X inside lid 90° bends – square
1	MGIP Z BSL	1 compartment
1	MGIP Z BSL2C	2 compartment
1	MGIP Z BSL3C	3 compartment
		IP4X outside lid 90° bends – gusset
1	MGIP Z CGL	1 compartment
1	MGIP Z CGL2C	2 compartment
1	MGIP Z CGL3C	3 compartment
		IP4X outside lid 90° bends – square
1	MGIP Z CSL	1 compartment
1	MGIP Z CSL2C	2 compartment
1	MGIP Z CSL3C	3 compartment

Pack	Cat. Nos.	Fittings (continued)
		IP4X 45° bends All bends are supplied with lid, lid fixings and a coupler pre-fitted with screws backed off, ready to accept slotted trunking
		IP4X top lid 45° bends
1	MGIP Z AL	1 compartment
1	MGIP Z AL2C	2 compartment
1	MGIP Z AL3C	3 compartment
		IP4X inside lid 45° bends
1	MGIP Z BL	1 compartment
1	MGIP Z BL2C	2 compartment
1	MGIP Z BL3C	3 compartment
		IP4X outside lid 45° bends
1	MGIP Z CL	1 compartment
1	MGIP Z CL2C	2 compartment
1	MGIP Z CL3C	3 compartment
		IP4X change faces Supplied with lids, lid fixings and one trunking connector fitted. Not available in multi-compartment. Only available in IP4X screwfix or tamperproof versions. For non square size options see p. 27
1	MSIP Z CLH	Left hand – square sizes only
1	MSIP Z CRH	Right hand – square sizes only
		IP4X cover strap Clips over coupler joint to provide IP4X. Used in conjunction with IP4X fittings
1	MGIP2CS	50 mm cover strap
1	MGIP3CS	75 mm cover strap
1	MGIP4CS	100 mm cover strap
1	MGIP6CS	150 mm cover strap
1	MGIP9CS	225 mm cover strap
1	MGIP12CS	300 mm cover strap

For lengths, lids and couplers, see p. 11



To achieve IP4X, all joints of the system should have a cover strap fitted. These should be ordered separately – 1 per length, 1 per bend / reducer, 2 per tee, 3 per crossover

see p. 10

Key : Z = trunking size code
Replace Z with the relevant code (see p. 10)