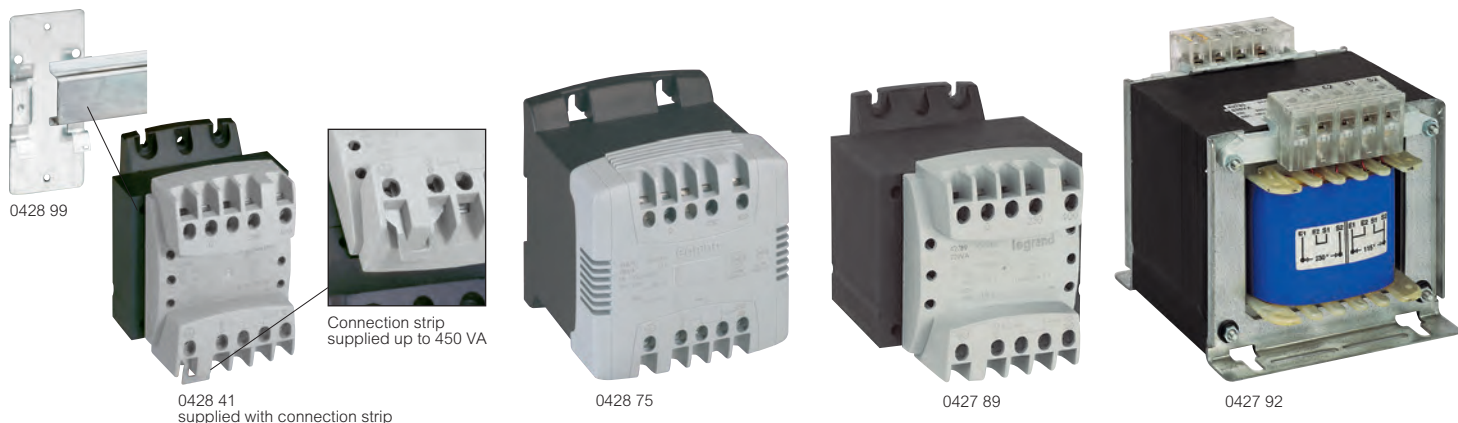


# compact transformers

## open type single phase



Technical information and dimensions **p. 37**  
Transformer protection **p. 39**

IP 2X or IP XXB up to 250 VA - IK 04

Conform to IEC/EN 61558-2-4 and IEC/EN 61558-2-6

Isolating and safety isolating <50 V transformers

Designed to meet the needs of users with specific VA ratings such as original equipment manufacturers

Terminals are designed to provide easy and quick connections

Transformers up to 160 VA can be clipped to rail using accessory or directly fixed using screws through the easily accessible fixing points

Multiple fixing possibilities :

- clip to DIN rail using Cat. No. 0044 16 or 0428 99 ( $\leq$  160 VA)

- direct panel mount

Recommended protection :

• for 40 and 63 VA : Type T fuses (5x20) time delay fuse to IEC 60127

• for >100 VA use MCB Type C

Pack	Cat. Nos.	Single phase	
		<b>Safety isolating transformers</b>	
		<b>Primary : 230-400 V</b>	
		<b>Secondary : 12-24 V</b>	
		Power in VA according to IEC/EN	Admissible instantaneous power at $\cos \varphi$ 0.5
1	0428 40	40 VA	55
1	0428 41	63 VA	91
1	0428 42	100 VA	140
1	0428 43	160 VA	205
1	0428 44	220 VA	290
1	0428 45	310 VA	345
1	0428 47	630 VA	1 520
		<b>Primary : 230-400 V</b>	
		<b>Secondary : 24 V</b>	
		Power in VA according to IEC/EN	Admissible instantaneous power at $\cos \varphi$ 0.5
1	0428 55	40 VA	55
1	0428 56	63 VA	91
1	0428 57	100 VA	140
1	0428 58	160 VA	205
1	0428 59	220 VA	290
1	0428 60	310 VA	345
1	0428 61	450 VA	1 100
1	0428 62	630 VA	1 520
		<b>Safety isolating transformers</b>	
		<b>Primary : 230-400 V</b>	
		<b>Secondary : 24-48 V</b>	
		Power in VA according to IEC/EN	Admissible instantaneous power at $\cos \varphi$ 0.5
1	0428 70	40 VA	55
1	0428 71	63 VA	80
1	0428 72	100 VA	150
1	0428 73	160 VA	160
1	0428 74	220 VA	290
1	0428 75	310 VA	345
1	0428 77	630 VA	1 520

Pack	Cat. Nos.	Single phase	
		<b>Isolating transformers</b>	
		<b>Primary : 230-400 V</b>	
		<b>Secondary : 115 V</b>	
		<b>With centre tap</b>	
		Power in VA according to IEC/EN	Admissible instantaneous power at $\cos \varphi$ 0.5
1	6423 62	63 VA	91
1	6423 63	100 VA	140
1	6423 64	160 VA	205
1	6423 65	220 VA	290
1	6423 66	310 VA	345
1	6423 68	630 VA	1 520
		<b>Isolating transformers</b>	
		<b>Primary : 230-400 V</b>	
		<b>Secondary : 115-230 V</b>	
		Power in VA according to IEC/EN	Admissible instantaneous power at $\cos \varphi$ 0.5
1	0427 85	40 VA	55
1	0427 86	63 VA	91
1	0427 87	100 VA	140
1	0427 88	160 VA	205
1	0427 89	220 VA	290
1	0427 90	310 VA	345
1	0427 92	630 VA	1 520
		<b>Accessories</b>	
		<b>Clips for fixing up to 160 VA on to rail EN 60715</b>	
10	0044 16	Claw width 10 mm Threaded hole for M4 screws (Use two clips per transformer)	
		<b>Mounting bracket</b>	
5	0428 99	DIN rail mounting bracket	