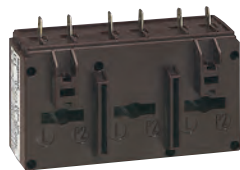


## Current transformers (CT)



4121 42



4121 58



4121 62

For information on current transformers technical characteristics contact us on **+44 (0) 370 608 9020**



Dimensions and technical information p. 17

Pack	Cat. Nos.	Single phase solid core current transformers																
		Used with ammeters, electricity meters or multi-function measuring units Current at the secondary: 5 A Can be fixed on plate, EN 60715 rail Cat. Nos. 4121 01/02/03/04/05/06/07, or bars Secondary connected by terminals or lugs Precision class: 0.5 % (1 % for Cat. Nos. 4121 01/02)																
		<b>For 16 x 12.5 mm bar or Ø21 mm cable</b>																
		<table border="1"> <thead> <tr> <th>Transformation ratio</th> <th>Output (VA)</th> </tr> </thead> <tbody> <tr><td>50/5</td><td>1.25</td></tr> <tr><td>75/5</td><td>1.5</td></tr> <tr><td>100/5</td><td>2</td></tr> <tr><td>125/5</td><td>2.5</td></tr> <tr><td>160/5</td><td>3</td></tr> <tr><td>200/5</td><td>4</td></tr> <tr><td>250/5</td><td>5</td></tr> </tbody> </table>	Transformation ratio	Output (VA)	50/5	1.25	75/5	1.5	100/5	2	125/5	2.5	160/5	3	200/5	4	250/5	5
Transformation ratio	Output (VA)																	
50/5	1.25																	
75/5	1.5																	
100/5	2																	
125/5	2.5																	
160/5	3																	
200/5	4																	
250/5	5																	
1	4121 01																	
1	4121 02																	
1	4121 03																	
1	4121 04																	
1	4121 05																	
1	4121 06																	
1	4121 07																	
		<b>For 32.5 x 10.5 and 25.5 x 15.5 mm bars or Ø27 mm cable</b>																
1	4121 12	400/5   10																
1	4121 14	600/5   12																
		<b>For 40.5 x 12.5 and 32.5 x 15.5 mm bars or Ø26 mm cable</b>																
1	4121 16	250/5   3																
1	4121 17	400/5   6																
1	4121 19	700/5   8																
		<b>For 40.5 x 10.5, 32.5 x 20.5 and 25.5 x 25.5 mm bars or Ø32 mm cable</b>																
1	4121 23	250/5   3																
1	4121 24	300/5   5																
1	4121 25	400/5   8																
1	4121 26	600/5   12																
		<b>For 50.5 x 12.5 and 40.5 x 20.5 mm bars or Ø40 mm cable</b>																
1	4121 31	700/5   8																
1	4121 32	800/5   8																
1	4121 33	1000/5   10																
		<b>For 65 x 32 mm bar</b>																
1	4121 36	600/5   8																
1	4121 38	800/5   12																
1	4121 39	1000/5   15																
		<b>For 84 x 34 mm bar</b>																
1	4121 42	1250/5   12																
		<b>For 127 x 38 mm bar</b>																
1	4121 46	1600/5   10																
1	4121 47	2000/5   15																
1	4121 49	3200/5   25																
		<b>For 127 x 54 mm bar</b>																
1	4121 50	1600/5   20																
1	4121 51	2000/5   25																
1	4121 52	2500/5   30																
1	4121 53	3200/5   30																
1	4121 54	4000/5   30																

Pack	Cat. Nos.	Three phase solid core current transformers				
		Used with ammeters, electricity meters or multi-function measuring units Current at the secondary: 5 A For fixing directly on bars Secondary connected by terminals or lugs Precision class: 1 %				
1	4121 57	<table border="1"> <thead> <tr> <th>Transformation ratio</th> <th>Output (VA)</th> </tr> </thead> <tbody> <tr><td>250/5</td><td>3</td></tr> </tbody> </table>	Transformation ratio	Output (VA)	250/5	3
Transformation ratio	Output (VA)					
250/5	3					
1	4121 58	<table border="1"> <thead> <tr> <th>Transformation ratio</th> <th>Output (VA)</th> </tr> </thead> <tbody> <tr><td>400/5</td><td>4</td></tr> </tbody> </table>	Transformation ratio	Output (VA)	400/5	4
Transformation ratio	Output (VA)					
400/5	4					
		<b>For three 20.5 x 5.5 mm bars</b>				
		<b>For three 30.5 x 5.5 mm bars</b>				
		<b>Single phase split-core current transformers</b>				
		Used with ammeters, electricity meters or multi-function measuring units Current at the secondary: 5 A For fixing directly on bars Secondary connected by terminals or lugs Precision class: 0.5 %				
		<b>For 50 x 80 mm bar</b>				
1	4121 62	400/5   1.5				
1	4121 63	750/5   3				
		<b>For 80 x 120 mm bar</b>				
1	4121 64	1000/5   5				
1	4121 65	1500/5   8				
		<b>For 80 x 160 mm bar</b>				
1	4121 66	2000/5   15				
1	4121 67	2500/5   15				
1	4121 68	3000/5   20				
1	4121 69	4000/5   20				

**For Viking 3 disconnecter blocks contact us on +44 (0) 370 608 9020**