

## access floor service outlet boxes

with RCD 30 mA protection



CR4401

 Selection charts p. 26-29  
Dimensions and technical information (opposite)

Electrak floor boxes are available with various RCD protection options and can be supplied pre-wired to powertrack tap-offs

### Floor boxes with RCD 30 mA protection and 2 x TSSO

| Pack   | Cat. Nos. | Boxes contain 1 spare 75 mm width compartment |
|--|-----------|---|
| 1  | CR4400    | Includes standard sockets                     |
| 1  | CR4401    | Includes low noise sockets                    |
| <b>Pre-wired RCD 30 mA protected floor boxes</b>                           |           |   |
| <b>Boxes contain RCD 30 mA and 2 x TSSO with 1 spare 75 mm compartment</b> |           |   |
| 1  | CR4402    | Pre-wired with Cat. No. DP1332 tap-off        |
| 1  | CR4403    | Pre-wired with Cat. No. DP1532 tap-off        |
| 1  | CR4412    | Pre-wired with Cat. No. JP2332 tap-off        |
| 1  | CR4413    | Pre-wired with Cat. No. JP2532 tap-off        |

### 4 compartment pre-wired RCD 30 mA protected floor boxes

| Pack | Cat. Nos. | Contain RCD 30 mA and 2 x TSSO with 1 spare 75 mm compartment |
|------|-----------|---|
| 1    | CR4400A   | Includes standard sockets                                     |
| 1    | CR4401A   | Includes low noise sockets                                    |
| 1    | CR4402A   | Pre-wired with Cat. No. DP1332 tap-off                        |
| 1    | CR4403A   | Pre-wired with Cat. No. DP1532 tap-off                        |
| 1    | CR4412A   | Pre-wired with Cat. No. JP2332 tap-off                        |
| 1    | CR4413A   | Pre-wired with Cat. No. JP2532 tap-off                        |

### 3 compartment pre-wired RCD 30 mA protected floor boxes

| Pack | Cat. Nos. | Contain RCD 30 mA and 2 x TSSO with 1 spare 75 mm compartment |
|------|-----------|---|
| 1    | CR4406A   | Pre-wired with Cat. No. DP5332 tap-off                        |
| 1    | CR4407A   | Pre-wired with Cat. No. DP5532 tap-off                        |

NOTE : Please consult us for different plate options on +44 (0) 370 608 9020. Photos are only illustrative.

## access floor service outlet boxes

technical information

### Floor boxes

#### Dimensions

Lid can accommodate carpets up to 6 mm depth  
Accessory plates are 172 mm long, with 162 mm fixing centres

#### Materials

Lid and trim mouldings are precision engineered from hard wearing durable ABS. Lid is reinforced with a galvanised mild steel plate  
Mounting frame and box base – 0.9 mm thick galvanised steel  
Floor service unit conforms to BS EN 61534-22

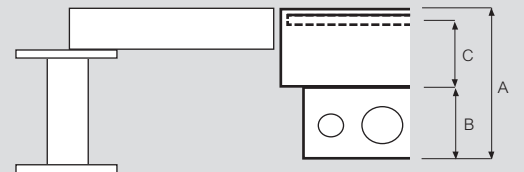
#### Wiring

Each compartment has 2 entries for 20 mm and 2 entries for 25 mm flexible conduits

#### Colour

Grey mouldings. Alternative colours available to special order  
Grey plates

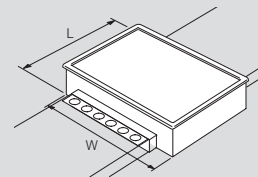
#### Dimensions from top of floor tile into floor void



| A (mm) | B Accessory box depth (mm) | C Underside lid to top of accessory (plus clearance) (mm) |
|--------|----------------------------|---|
| 75     | 35                         | 35  |
| 85     | 45                         | 35  |
| 110    | 45                         | 60  |

#### Screed floor boxes

| Compartment | W (mm) | L (mm) |
|-------------|--------|--------|
| 3C          | 350    | 245    |
| 4C          | 350    | 245    |



### To install access floor box



Cut hole in raised floor tile, lower complete box into aperture and push firmly down

#### Floor tile cut-out dimensions

2 compartment : 263 mm x 203 mm<sup>1</sup>

3 and 4 compartment : 340 mm x 203 mm<sup>1</sup>

Floor cut-out aperture is the same for single base or separate compartment base

#### To fit carpet :

Detach lid and trim assembly by lifting the blue locking handles and lifting out. Cut and fit carpet. Push lid and trim assembly back into place



1 : The aperture dimension 203 mm has a fixing tolerance between 203 to 205 mm