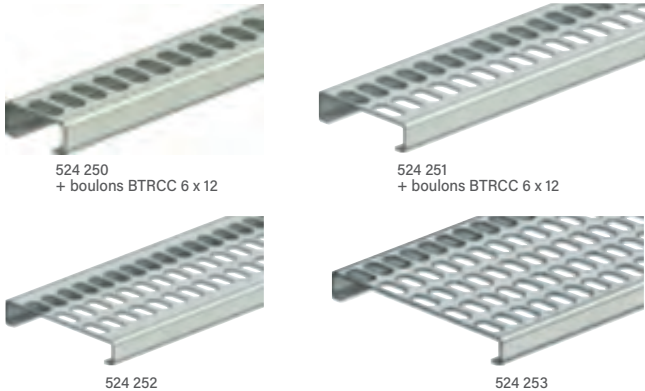




# FIXATIONS DIVERSES

## PROFILS DIVERS ET TÉLEX RAIL

### → TÉLEX-RAILS

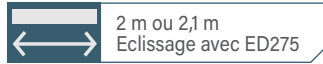
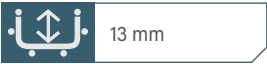


524 250  
+ boulons BTRCC 6 x 12

524 251  
+ boulons BTRCC 6 x 12

524 252

524 253



Perforation 7,5 x 15 mm

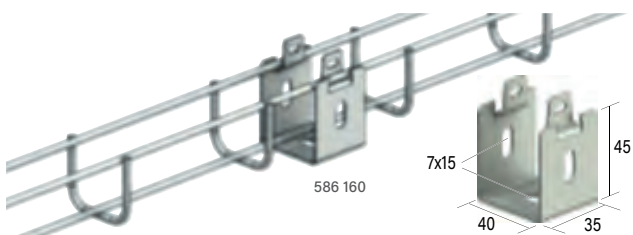
Emb. **GS** **GC** **316L**

<b>TX30</b>	2 M	<b>524 250</b>	<b>524 260</b>	<b>830 014</b>
<b>TX50</b>	2 M	<b>524 251</b>	<b>524 261</b>	830 024
<b>TX75</b>	2 M	524 252	524 262	-
<b>TX105</b>	2 M	524 253	524 263	-

++ Éclisses ED  
p. 119



### → BERCEAUX UC35



586 160



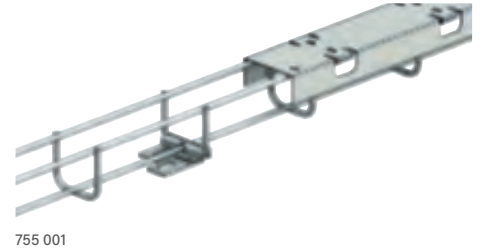
Pour fixation du télex-rail TXF35 sur console ou en applique murale  
Fixation par pattes rabattables

Emb. **GS** **GC** **316L**

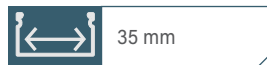
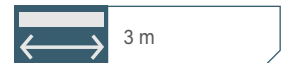
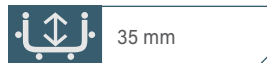
<b>UC35</b>	25 P	<b>586 160</b>	586 163	586 164
-------------	------	----------------	---------	---------

Vis : - 1 point de fixation jusqu'à la largeur 200 mm incluse  
- 2 points de fixation à partir de la largeur 300 mm

### → TÉLEX-RAIL FIL TXF35 ET COUVERCLE



755 001



Assemblage des TXF35 par éclisses CE25 + CE30 (p. 118)  
+ boulons BTRCC 6 x 20 (p. 234)  
Montage par patte rabattable  
Montage des couvercles par patte rabattable

Emb. **EZ** **GS** **GC** **304L** **316L**

<b>TXF35</b>	3 M	<b>755 001</b>	-	755 003	755 008	755 004
<b>CP35</b>	3 M	-	755 100	755 103	-	755 104

Charge (daN) Emb. **GS** **HR** **316L**

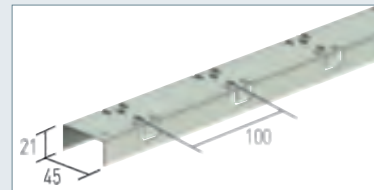
<b>FTX</b>	50	25 P	586 180	586 183	586 184
------------	----	------	---------	---------	---------

### DIMENSIONS

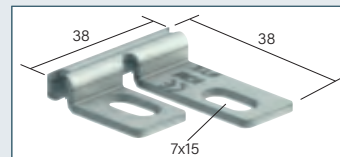
#### TXF35



#### CP35



#### FTX



++ Fixations FTX  
p. 226

