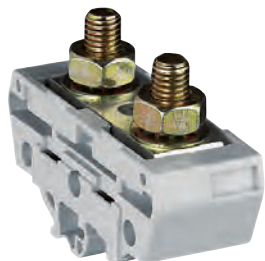


Viking 3 heavy duty terminal blocks

for copper bars and cable lugs



0390 32



0394 78 + 86

Technical characteristics **p. 67**

| Pack | Cat. Nos. | Heavy duty terminal blocks | | | |
|------|-----------|---|---------------------|----------|------------|
| | | For copper bars or cable lugs | | | |
| | | Conform to IEC EN 60947-7-1 | | | |
| | | Fire resistance : 960 °C, IEC EN 60695-2-11 | | | |
| | | V2 according to UL94 | | | |
| | | Insulating material : polyamide -30 °C to +100 °C | | | |
| | | Bridging the gap between the enclosure and external cables | | | |
| | | Plastic foot | | | |
| | | For use with terminal marker sheets (p. 70) | | | |
| | | Separation barriers and protective covers to be ordered separately | | | |
| | | For symmetrical rails | | | |
| | | Fixed using metal clip on rails 15 mm depth and EN 60715, 15 mm depth (p. 58) | | | |
| | | Connecting max. (mm ²) | Width of plate (mm) | Stud (∅) | Width (mm) |
| 5 | 0390 71 | 35 | 15 | M 8 | 26 |
| 5 | 0390 72 | 70 | 20 | M 10 | 34 |
| 5 | 0390 73 | 120 | 25 | M 10 | 34 |
| 5 | 0390 74 | 240 | 35 | M 12 | 46 |
| | | For asymmetrical rails | | | |
| | | Fixed using metal clip on rails EN 60715 (p. 26) | | | |
| 5 | 0390 31 | 35 | 15 | M 8 | 26 |
| 5 | 0390 32 | 70 | 20 | M 10 | 34 |
| 5 | 0390 33 | 120 | 25 | M 10 | 34 |
| 5 | 0390 34 | 240 | 35 | M 12 | 46 |

| Pack | Cat. Nos. | Accessories | |
|------|-----------|--|--|
| | | Separation barriers | |
| | | Take protective covers | |
| | | Marking possible with CAB 3 marking system (p. 70) | |
| 10 | 0394 77 | For terminals with width 26 mm | |
| 10 | 0394 78 | For terminals with width 34 and 46 mm | |
| | | Protective covers | |
| | | For mounting on separation barriers | |
| 5 | 0394 86 | For 3 terminals with width 46 mm or for 4 terminals with width 34 mm | |
| 5 | 0394 88 | For 4 terminals with width 26 mm | |
| 5 | 0394 89 | For 4 terminals with width 46 mm | |



End stops p. 58

CAB 3 marking system **p. 70-73**



Enclosures **p. 6-29**

