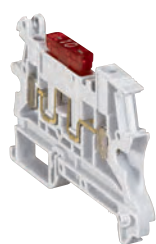


Viking 3 terminal blocks – screw connection

for copper cable (continued)



0371 80 + automotive-type fuse



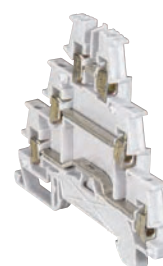
0371 82 + 0371 83 +
0371 85



0371 84 + 0371 86



0371 87



0371 51



0371 52

Accessories **p. 58-59**
Technical characteristics **p. 60-61**

All V2 polyamide UL94 960 °C to IEC EN 60695-2-11
Compatible with either rigid (0.25 mm² to 95 mm²) or flexible (0.25 mm² to 70 mm²) copper cables
Facility for 2 bridging combs
Compatible with rails depth 15 mm and rails EN 60715 depth 7.5 mm and 15 mm
Range comprises only 2 block heights (2.5 mm² to 10 mm² and 16 mm² to 70 mm²) ensuring a neat installation

Pack	Cat. Nos.	Disconnection				
		1 connection Disconnection by means of blade type lever, handle lever or mini lever (with tool) Open (to be equipped) Can take a blade-type automotive fuse or a miniature circuit breaker				
		Colour	Nominal cross section (mm ²)	Capacity		Width (mm)
				Rigid cable (mm ²)	Flexible cable (mm ²)	
20	0371 80	Grey ●	2.5	0.25 to 2.5	0.25 to 2.5	6
20	0371 81	Grey ●	2.5	0.25 to 2.5	0.25 to 2.5	6
20	0371 82	Grey/blue ●	2.5	0.25 to 2.5	0.25 to 2.5	6
20	0371 83	Grey ●	2.5	0.25 to 2.5	0.25 to 2.5	6
20	0371 84	Grey ●	2.5	0.25 to 2.5	0.25 to 2.5	6
20	0371 85	Orange ●	2.5	0.25 to 2.5	0.25 to 2.5	6
20	0371 86	Orange ●	2.5	0.25 to 2.5	0.25 to 2.5	6
20	0371 87	Grey ●	10	0.25 to 16	0.25 to 10	12

Blown fuse indicators p. 59

Pack	Cat. Nos.	Blocks for sensors and actuators				
		For connecting sensors (Cat. No. 0371 51) or actuators (Cat. No. 0371 52), and their shared power supply unit when using equipotential bridging comb Cat. Nos. 0375 46/47 (wiring diagram p. 59)				
		3 connections on 3 levels - for sensor				
		Colour	Nominal cross section (mm ²)	Capacity		Width (mm)
				Rigid cable (mm ²)	Flexible cable (mm ²)	
50	0371 51 ¹	Grey ●	2.5	0.25 to 4	0.25 to 2.5	5
		3 connections on 3 levels - for actuator Green/yellow marking for the lower level Metal base. Screwless fixing on rail				
50	0371 52 ¹	Grey ●	2.5	0.25 to 4	0.25 to 2.5	5



Accessories p. 58-59

End stops p. 58

CAB 3 marking system **p. 70-73**
Starfix ferrules and crimping tools **p. 78-79**



1 : Rigid cable capacity - 2.5 mm² max. only when used with bridging comb