

# Atlantic stainless steel enclosures

304 L



Wall mounting lugs, horizontal or vertical installation



0352 01 + 0364 06

Enclosure and equipment selection chart p. 6-7

IP 66 according to standards IEC EN 60529  
 IK 10 according to standards IEC EN 62262 (EN 50102)  
 Suitable for harsh environments. Brushed stainless steel finish  
 Door with rounded vertical edges  
 Double bar lock. Upper and lower protective hoods  
 Reversible enclosure  
 Self-centering positioning system for the equipment  
 Excellent resistance to corrosion and weather conditions  
 Compatible with all Atlantic and Atlantic stainless steel accessories

Pack	Cat. Nos.	Stainless steel enclosures 304L (1 door)			Weight (kg)
		External dimensions			
		Height (mm)	Width (mm)	Depth (mm)	
1	Metal door	300	200	160	4
1	0352 00 <sup>1</sup>	300	200	160	4
1	0352 01	400	300	200	5.8
1	0352 02	500	400	200	8.3
1	0352 03	600	400	200	10.8
1	0352 05	600	400	250	12
1	0352 06	700	500	250	15
1	0352 11	800	600	300	22
1	0352 13	1000	800	300	38

### Stainless steel wall mounting lugs

For load up to 300 kg  
 Horizontal or vertical installation  
 Supplied with stainless steel screws  
 Set of 4  
 304 L

1	0364 06
---	---------

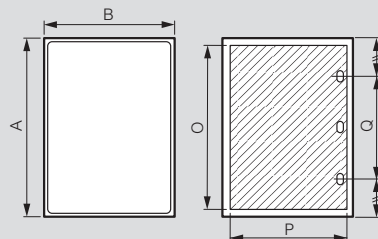
<sup>1</sup> : Supplied with plain plate

# Atlantic stainless steel enclosures

technical characteristics

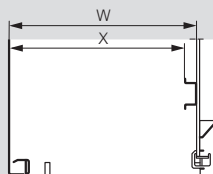
## Usable dimensions

### Doors



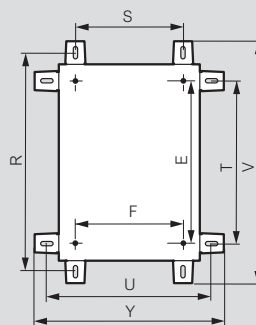
Cat. Nos.	Enclosures			Door usable dimensions		Lock position Q (mm)
	Height A (mm)	Width B (mm)	Depth (mm)	O (mm)	P (mm)	
0352 00	301.6	199.6	161.5	250	150	-
0352 01	401.6	299.6	201.5	350	250	-
0352 02	501.6	399.6	201.5	450	350	250
0352 03	601.6	399.6	201.5	550	350	380
0352 05	601.6	399.6	251.5	550	350	380
0352 06	702.4	500	251.5	650	450	400
0352 11	802.4	600	301.5	750	550	400
0352 13	1003.6	800.6	301.5	950	750	600

## Usable depth

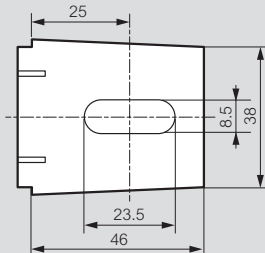


Enclosures	Back of enclosure	
	W	X
Depth (mm)		
160	140	125
200	180	165
250	230	215
300	280	265
400	380	365

## Fixing



Cat. Nos. 0364 06



Cat. Nos.	Vertical position		Horizontal position		V	Y	E	F
	R	S	T	U				
0352 00	350	150	250	250	392	292	225	169
0352 01	450	250	350	350	492	392	325	269
0352 02	550	350	450	450	592	492	425	369
0352 03	650	350	550	450	692	492	525	369
0352 05	650	350	550	450	692	492	525	369
0352 06	750	450	650	550	792	592	625	469
0352 11	850	550	750	650	892	692	725	569
0352 13	1050	750	950	850	1092	892	925	769