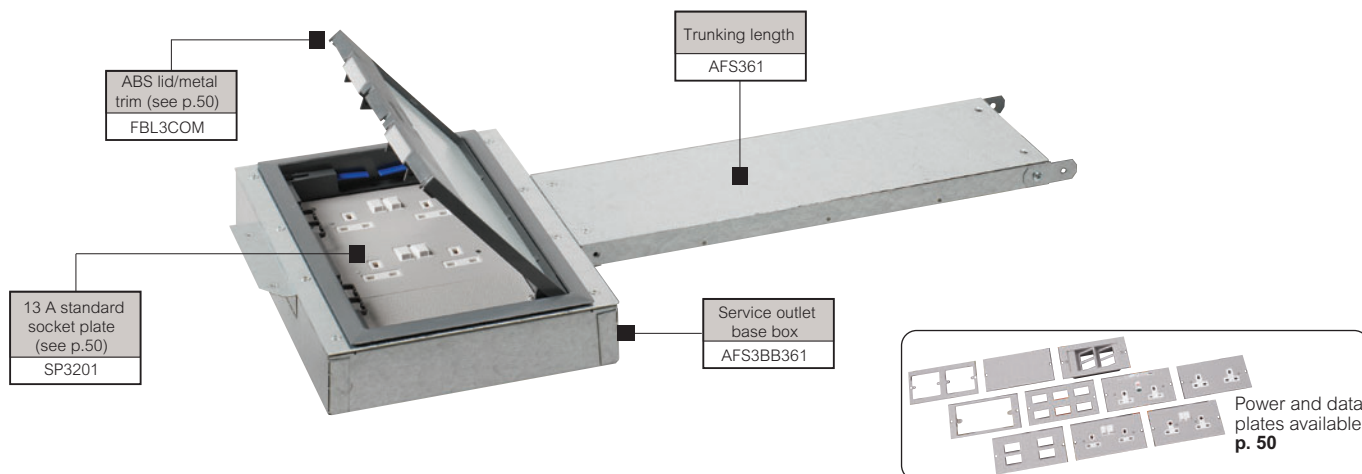


commercial floor trunking systems

shallow flush floor trunking



Screed floor outlet boxes selection chart p. 48-49
Dimensions and technical information p. 53
Installation details p. 55

Body and lid manufactured from pre-galvanised sheet steel to BS EN 10346

Standard lengths : trunking 2.0 m, lid 0.5 m

Standard lid thickness : 2.5 mm

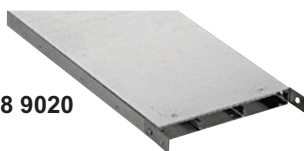
Each 2 m length is fitted with 4 x 500 mm long lids and supplied complete with all necessary connectors and screws

Pack	Cat. Nos.	Shallow flush floor trunking	
		Trunking length – 2 m	
1	2 comp AFS261	3 comp AFS361	150 x 25 mm
1	AFS265	AFS365	150 x 38 mm
1		AFS391	225 x 25 mm
1		AFS395	225 x 38 mm
		Spare connector set	
1	AFS3611		150 mm wide
1	AFS3911		225 mm wide
		90° riser bend	
		Supplied with screeding cover Provides conduit entry with 20 mm knockouts	
1	2 comp AFS2613	3 comp AFS3613	150 x 25 mm
1	AFS2653	AFS3653	150 x 38 mm
1		AFS3913	225 x 25 mm
1		AFS3953	225 x 38 mm
		Back entry skirting adaptor	
1	AFSS FSKS	To complete the Cat. No. specify : F = shallow flush floor trunking size code S = skirting trunking height in inches Example : AFSS 361 SK6	
		Cable trunking adaptor	
1	AFST FT	Supplied with turnbuckle fix lid To complete the Cat. No. specify : F = shallow flush floor trunking size code T = standard cable trunking Cat. No. Example : AFST 361 MGR623C	

Pack	Cat. Nos.	Shallow flush floor trunking (continued)	
		End cap	
1	AFS2615		150 x 25 mm
1	AFS2655		150 x 38 mm
1	AFS3915		225 x 25 mm
1	AFS3955		225 x 38 mm
		Junction box	
		Supplied with connections and blanking plates Can be configured as a fourway, tee, bend or straight through connector box	
1	2 comp AFS2614	3 comp AFS3614	150 x 25 mm
1	AFS2654	AFS3654	150 x 38 mm
1		AFS3914	225 x 25 mm
1		AFS3954	225 x 38 mm
		Service outlet base boxes	
		Service outlet base boxes are supplied empty Service outlet boxes are 65 mm deep Due to shallow depth of trunking, box locations need to be defined and recessed locally before installation To complete the system, the outlet base box requires outlet plates, lid and trim Outlet plates, lids and trims ordered separately, (see p. 50)	
1	2 comp AFS2BB261	3 comp AFS3BB361	To suit 150 x 25 mm trunking
1	AFS2BB265	AFS3BB365	To suit 150 x 38 mm trunking
1		AFS3BB391	To suit 225 x 25 mm trunking
1		AFS3BB395	To suit 225 x 38 mm trunking
		4 comp	
1	AFS4BB261		To suit 150 x 25 mm trunking
1	AFS4BB265		To suit 150 x 38 mm trunking
1	AFS4BB361		To suit 150 x 25 mm trunking
1	AFS4BB365		To suit 150 x 38 mm trunking
1	AFS4BB391		To suit 225 x 25 mm trunking
1	AFS4BB395		To suit 225 x 38 mm trunking

Shallow flush floor trunking can be supplied in different widths and depths

Contact us on +44 (0) 370 608 9020



All trims for service outlet boxes can be ABS, stainless steel, brass or powder coated any colour **p. 50**

