

Mosaic™ mechanisms

touchless switch and touch switches



0 766 66L



0 766 95L



0 787 13

Selection chart for boxes, supports and plates **p. 1198-1199**

Pack	Cat.Nos	Touchless switches 10 AX - for lights
1	0 766 66L	<p>2 modules. Allows to control light sources by simply passing the hand in front of the switch. Detection distance 6 cm. LED indicator light, activated by default (can be switched off). Mechanism depth 20 mm, compatible with all types of flush-mounting boxes. 2 possibilities of cabling:</p> <ul style="list-style-type: none"> • With neutral, 3 wires Accepted power by lamp type: <ul style="list-style-type: none"> - LEDs and CFL lamps: 200 W LED - Incandescent and halogen lamps: 200 W - LEDs, CFLs, halogen lamps, fluorescent tubes with ferromagnetic or electronic transformer: 200 VA • Without neutral, 2 wires Accepted power by lamp type: <ul style="list-style-type: none"> - LEDs and CFL lamps: 5 to 200 W LED - Incandescent and halogen lamps: 5 to 200 W - LEDs, CFLs, halogen lamps, fluorescent tubes with ferromagnetic or electronic transformer: 5 to 200 VA • 4 modes available: <ul style="list-style-type: none"> - 1-way switch mode: wiring with or without neutral - 2-way switch mode: wiring with neutral mandatory - Master/Slave mode: wiring with neutral mandatory, 3 slaves max. - Push-button mode: wiring with neutral mandatory, for controlling relays or a "with Netatmo" micromodule
1	0 766 67L	
1	0 766 95L	



Pack	Cat.Nos	Touchless switches 10 AX - for door
1	0 766 80L	<p>2 modules. Allows to control door opening by simply passing the hand in front of the switch. Detection distance adjustable from 10 cm (default setting) to 30 cm. LED indicator light, activated by default (can be switched off). Mechanism depth 25 mm, compatible with all types of flush-mounting boxes. Power supply 12 - 24 - 48 V=</p> <p>Available modes :</p> <ul style="list-style-type: none"> - ON/OFF mode/pulse mode (by default mode) - NC/NO mode (by default mode)
1	0 766 81L	
1	0 766 96L	



Pack	Cat.Nos	Touch switches
1	0 787 09	<p>For controlling light sources and other functions by touching the switch. Particularly suitable for applications in medical environments. Marking possible with label (supplied) to be put under the cover plate. 2 modules</p> <p>Switch with neutral Equipped with indicator light (LED) For controlling lamps (maximum loads, see p. 1178):</p> <ul style="list-style-type: none"> - up to 1000 W for 230 V~ incandescent or halogen - up to 500 VA for ELV halogen with ferromagnetic or electronic transformer

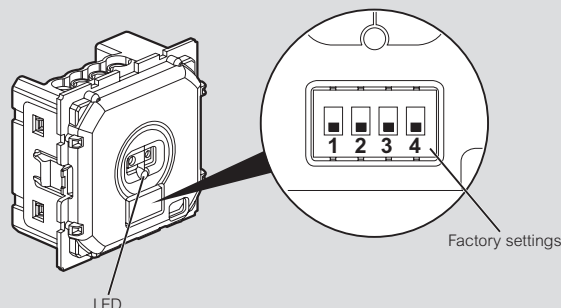
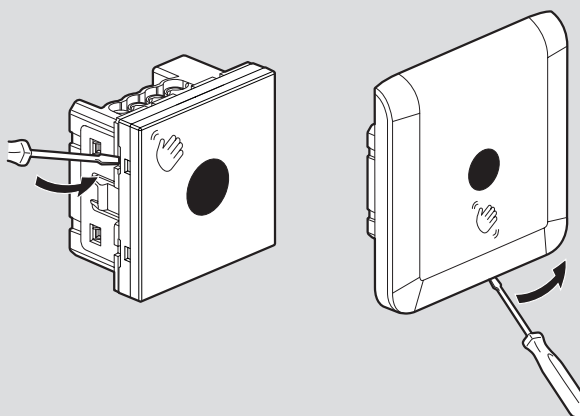
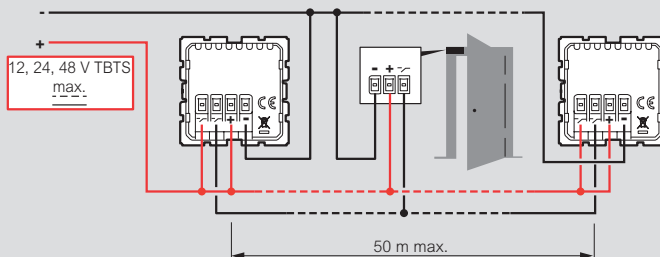


1: Contains a silver compound to prevent the growth of bacteria on the surface of the plate

Mosaic™ mechanisms

touchless switches 10 AX - for door

Wiring and settings



	1	2	3	4
	LED		Mode	NO/NF
	OFF	≤ 30 cm	Maintained	NF
	ON	≤ 10 cm	Pulse	NO