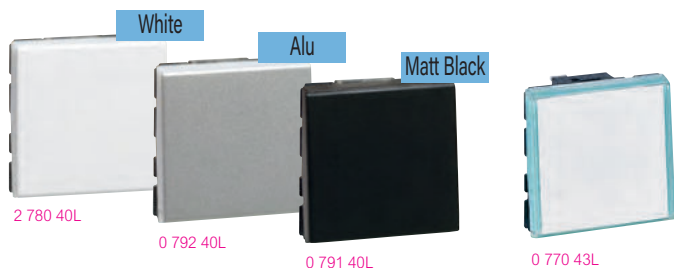


Mosaic™ mechanisms

push-buttons



Selection chart for boxes, supports and plates p. 1198-1199

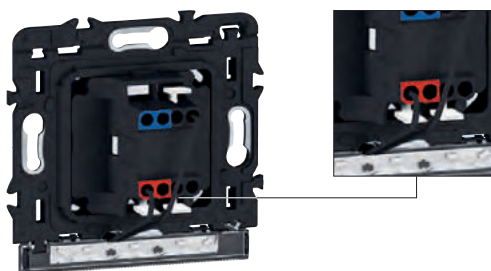
Automatic terminals, no tool required

Pack	Cat.Nos	Easy-Led push-buttons 6 A - 250 V~
		Depending on the wiring, can become a two-way push-button 1 mechanism allows you to create an LED or standard function Can become illuminated with plug-in indicator Cat.No 0 676 86L (230 V) or Cat.No 0 676 87L (12, 24, and 48 V) shown opposite
10	2 780 30L	1 module
10	0 792 30L	○ White
10	0 791 30L	● Alu
10	0 787 14L	● Matt Black
		○ White antimicrobial ⁽¹⁾
10	2 780 40L	2 modules
10	0 792 40L	○ White
10	0 791 40L	● Alu
10	0 787 15L	● Matt Black
		○ White antimicrobial ⁽¹⁾
10	0 770 43L	2 modules - with label-holder
		○ White antimicrobial ⁽¹⁾
		4-position Easy-Led push-button
		Equipped with Leds Allows to control 4 light circuits
10	0 770 45L	2 modules
10	0 792 46L	○ White
10	0 791 46L	● Alu
		● Matt Black
		Indicator push-button 6 A - 250 V~
		For the indicator function, the indicator light terminals are volt-free. Use indicator light Cat.No 0 676 88L with distributed phase wiring (shown opposite)
10	0 770 33L	One-way push-button - 1 module
		○ White
		Two-way push-button with free terminal 6 A - 250 V~
		To be equipped with light Cat.No 0 676 87L (see opposite) in 12/24/48 V~
10	0 770 34L	1 module
		○ White

1: Contains a silver compound to prevent the growth of bacteria on the surface of the plate

Mosaic™ mechanisms

Easy-Led lights and other lights



Example of indicator light mounted on support and wired with two-way switch

Pack	Cat.Nos	Easy-Led plug-in lights with white LEDs
		Connected by direct mounting
10	0 676 86L	Locator lights
10	0 676 87L	230 V - 0.041 W 12/24/48 V~ - 0.006 W/0.033 W/0.153 W
10	0 676 85L	Indicator lights
10	0 676 88L	230 V - 0.39 W 230 V - 0.39 W - distributed phase
10	0 676 89L	12/24/48 V~ - 0.006 W/0.033 W/0.153 W
		Other lights
		For indicator or locator function
10	0 676 64	Light for socket outlets and 20 AX switches
		230 V Consumption 2.4 mA To be wired
10	0 676 63	Green light for socket outlets
		230 V Consumption 2.4 mA To be wired
10	0 802 62L	White locator lights for Batibox support frames
10	0 802 60L	230 V - 0.04 W 230 V - 0.03 W