

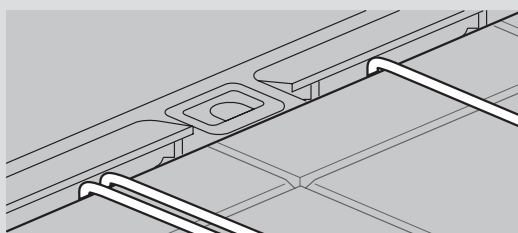
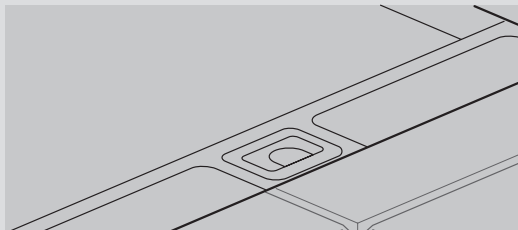
Floor boxes for tiles/marble for screed floor

technical characteristics (continued)

■ Functions

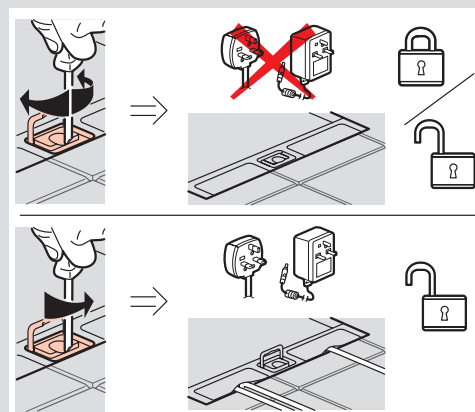
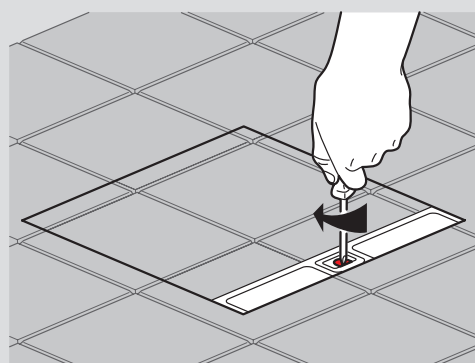
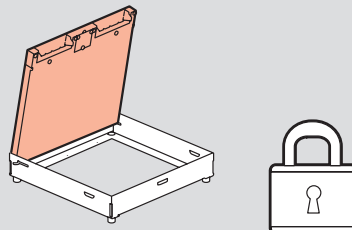
Rigid cable exits

Full metal rigid cable exits
 Maximum cable capacity 4 cables Ø7 mm + 3 cables Ø11 mm
 Provides maximum protection for cables and strength



Locking system

The floor boxes Cat.Nos 6 896 51/52 can be locked by means of a locking system on the lid (hidden under the opening handle)
 For safety reasons, floor box should not be locked when in use



Locking system for Cat.Nos 6 896 51/52