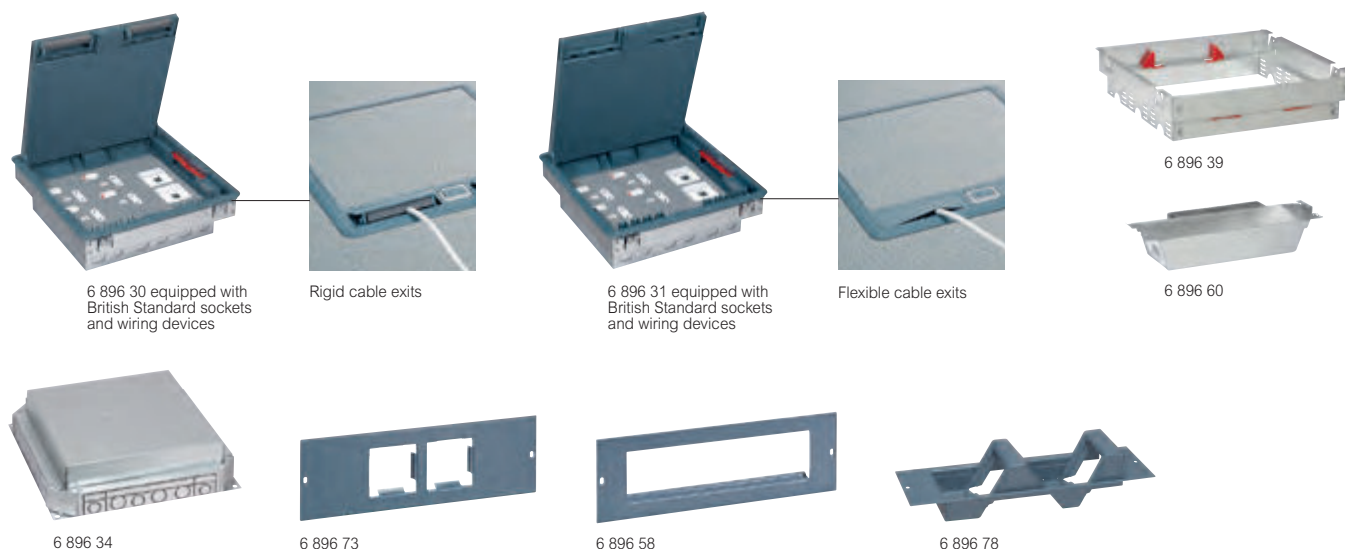


## Floor boxes for carpet



Technical characteristics **p. 1156-1157**

Conform to IEC/EN 60670-23  
Compatible with either raised access floor trunking system and screed floor system

Pack	Cat.Nos	Lid and trims for carpet	Pack	Cat.Nos	Screed floor backboxes
		To be equipped with Arteur wiring accessories Supplied with flexible or rigid cable exits			To be fitted with lid and trim for carpet and support plates for Arteur mechanisms Accept PVC and metal screed floor ducting and conduits Ø20 mm and Ø25 mm Auto-adjustable to screed height 65 up to 90 mm
		<b>3-compartment floor boxes</b>			<b>For ducting up to 225 mm</b>
		To be fitted on either			3 compartments
5	6 896 30	- modular backbox for raised floors Cat.No 6 896 39	1	6 896 34	<b>For ducting up to 300 mm</b>
5	6 896 31	- screed floor backbox Cat.No 6 896 34	1	6 896 45	4 compartments
		Grey cover RAL 7031 with rigid cable exits			<b>Support plates for Arteur or Mosaic mechanism</b>
		<b>4-compartment floor boxes</b>			Support plates for integration of Arteur or Mosaic mechanisms in floor boxes
		To be fitted on either			<b>Flat support plates</b>
		- modular backbox for raised floors Cat.No 6 896 49			Width: 77 mm
5	6 896 40	- screed floor backbox Cat.No 6 896 45	12	6 896 73	For 4 modules (2 x 2 modules)
5	6 896 41	Grey cover RAL 1019 with rigid cable exits	12	6 896 74	For 6 modules (3 x 2 modules)
		Grey cover RAL 1019 with flexible cable exits	12	6 896 77	For 6 modules (2 x 3 modules)
			12	6 896 58	For 8 modules
		<b>Modular backbox for raised floors</b>			<b>Waved support plates for data sockets</b>
		Adjustable height between 86 to 107 mm			For 4 modules (2 x 2 modules)
		To be fitted with lid and trims for carpet and support plates for Arteur or Mosaic wiring accessories (p. 560 and 1172)	4	6 896 78	Width: 77 mm
		Backboxes are connected to the raised floor trunking system with flexible conduits			
		One complete assembly consists of: support frame + modules + lid and trim			
		<b>Support frame</b>			
		To be equipped with modules below			
1	6 896 39	3 compartments (264 x 264 mm)			
1	6 896 49	4 compartments (264 x 341 mm)			
		<b>Module</b>			
4	6 896 60	Single module for 77 mm plates			