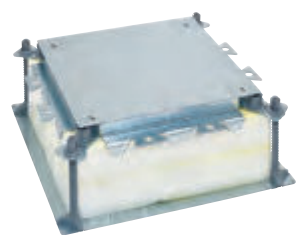


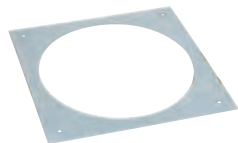
Universal adjustable backbox for floor boxes and access covers



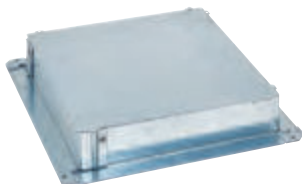
0 880 80



0 880 83



0 880 89



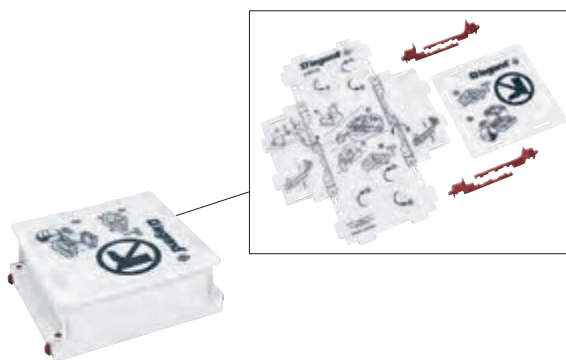
0 880 85

Technical characteristics p. 1153-1154

Conform to standard IEC/EN 60670-23

Pack	Cat.Nos	Universal adjustable backbox for concrete floor
1	0 880 80	Screed height: 55 to 125 mm
1	0 880 86	Height extension feets Kit of 4 height extension feets for universal adjustable backbox Cat.No 0 880 80
3	0 880 88	Bloc of foam for height extension Bloc of foam for height extension for universal adjustable backbox Cat.No 0 880 80
1	0 880 81	Mounting adaptors for concrete floor For standard or flush version floor boxes 8/12 modules Cat.Nos 0 880 20/23/39 and 0 881 20/23/39
1	0 880 82	12/18 modules Cat.Nos 0 880 21/24/40 and 0 881 21/24/40
1	0 880 83	16/24 modules Cat.Nos 0 880 22/25/41 and 0 881 22/25/41
1	0 880 89	For round version floor boxes 12/20 modules
1	0 880 85	Finishing kit for waxed concrete For 16/24-module standard version floor boxes

Foldable backboxes for floor boxes and access covers



0 881 92

Pack	Cat.Nos	Foldable backboxes for concrete floor
		Can be used for a new installation or for renovation Screed height: 70 to 110 mm
1	0 881 90	For standard version floor boxes 8/12 modules Cat.Nos 0 880 20/23/39
1	0 881 91	12/18 modules Cat.Nos 0 880 21/24/40
1	0 881 92	16/24 modules Cat.Nos 0 880 22/25/41