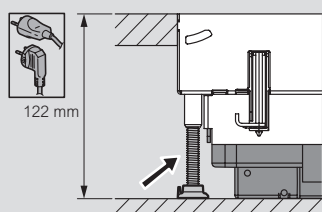
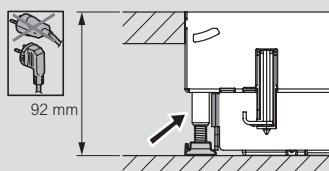
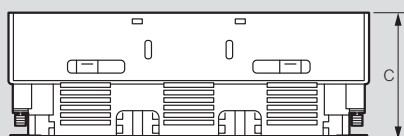
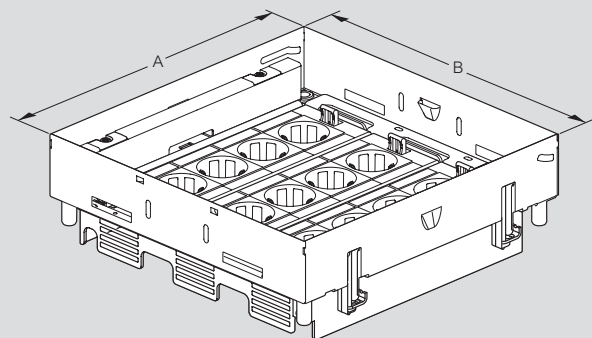


Flush version floor boxes - sockets in horizontal position

technical characteristics

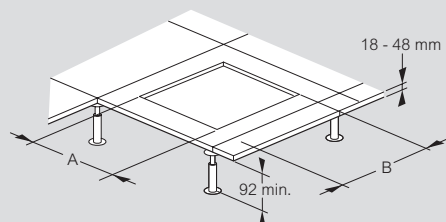
■ Dimensions



Cat.Nos	A (mm)	B (mm)	C (mm)
0 881 20	181	265	92
0 881 21	219		
0 881 22	264		

For heights of more than 122 mm, use feet
Cat.No 0 881 42

■ For installation in raised floor

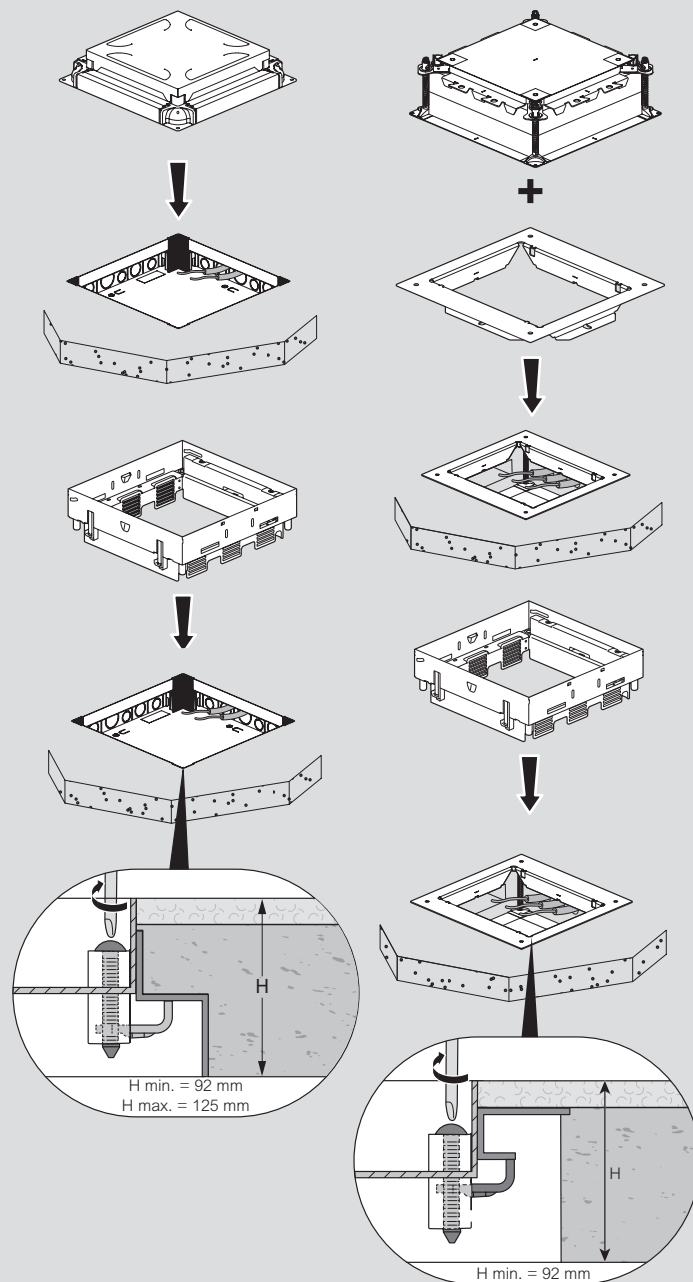


Cat.Nos	A (mm)	B (mm)
0 881 20	182	265
0 881 21	220	
0 881 22	265	

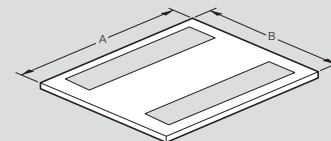
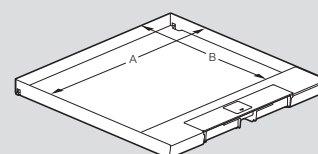
■ Installation principle in concrete floor

With auto-adjusting
backbox

With universal adjustable
backbox



■ Metal lid and finishing plate (dimensions)



Cat.Nos	A (mm)	B (mm)
0 881 03/06	259	127
0 881 04/07		165
0 881 05/08		210

Cat.Nos	A (mm)	B (mm)
0 881 45/48	257	125
0 881 46/49		163
0 881 47/50		208