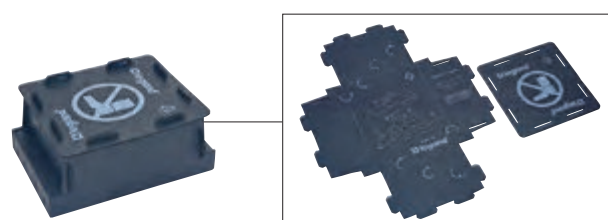


12-module floor boxes



0 881 70



0 881 71

0 881 72

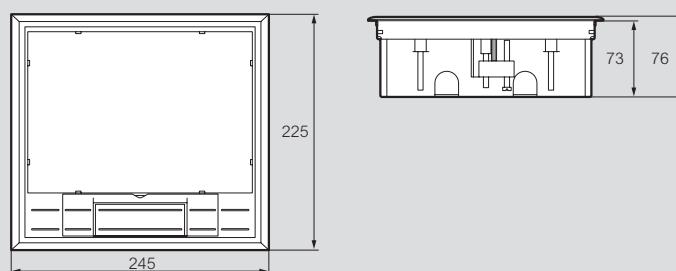
Technical characteristics **see opposite.**

Pack	Cat.Nos	Plastic cover floor boxes
4	0 881 71	To be equipped with Arteur or Mosaic wiring accessories (direct clipping) Supplied with fixing supports for wiring devices Can be installed directly into raised access floors For screed floors use the backbox Cat.No. 0 881 70 Flooring thickness ≤ 8 mm For wiring devices in vertical position 12 modules (2 x 6) Minimum height: - screed floor: 80 mm - raised access floor: 75 mm
4	0 881 72	For wiring devices in horizontal position 12 modules (2 x 6) Minimum height: - screed floor: 90 mm - raised access floor: 75 mm
10	0 881 70	Screed floor backbox For installation of 12-module floor boxes Cat.Nos 0 881 71/72 into screed floors Flat-pack, to be folded during installation

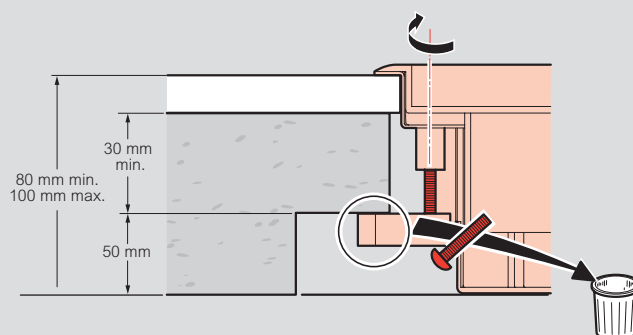
12-module floor boxes

technical characteristics

■ Dimensions



■ Installation in concrete floor with backbox Cat.No 0 881 70



■ Installation in raised floor

