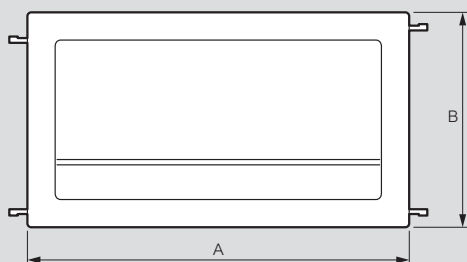
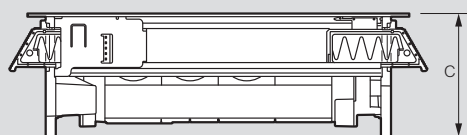


# Incara™ Flip-up - British standard

## technical characteristics

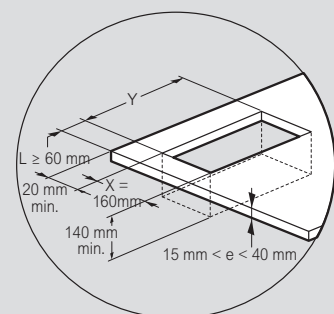
### ■ Dimensions (mm)



Cat.Nos	A	B	C
6 549 58/59/60/61	303	170.5	97.5
6 549 64/65/66/67	303		

### ■ Installing on a desktop

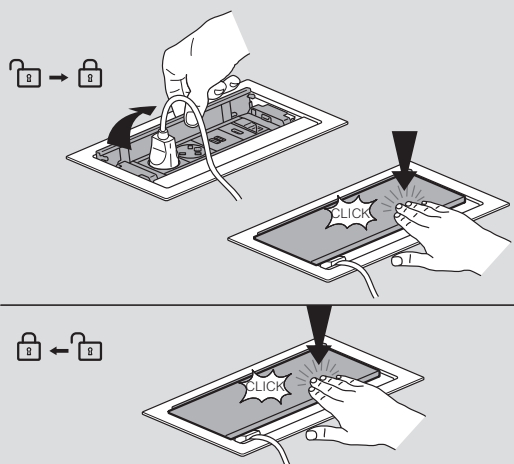
#### Drilling dimensions and maximum cut-out radius in corners



Cat.Nos	Y ± 1 mm
6 549 58/59/60/61	286
6 549 64/65/66/67	376

**+** **Note:** For other cut-outs: see the product data sheet available online

### ■ Use



### ■ Insertion and fixing

