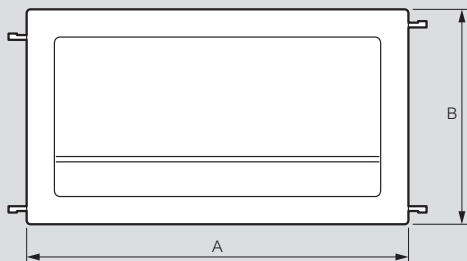
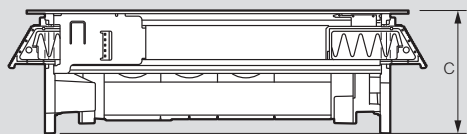


# Incara™ Flip-up - German standard

## technical characteristics

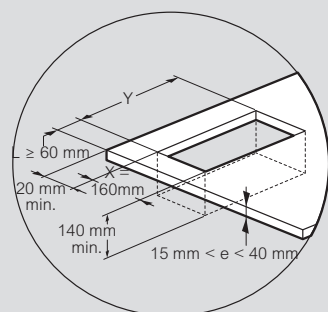
### ■ Dimensions (mm)



Cat.Nos	A	B	C
6 548 54/55	303	170.5	97.5
6 548 56/57	303		

### ■ Installing on a desktop

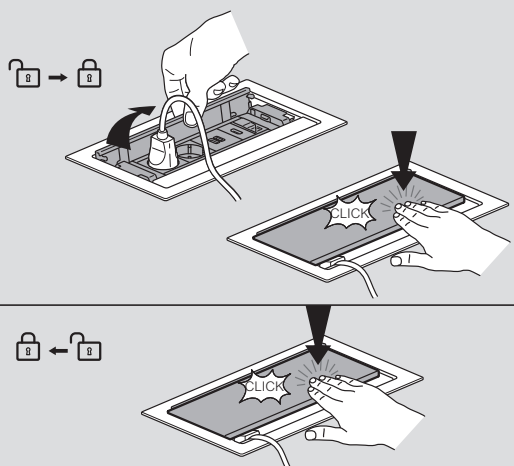
Drilling dimensions and maximum cut-out radius in corners



Cat.Nos	Y ± 1 mm
6 548 54/55	286
6 547 56/57	376

**Note:** For other cut-outs: see the product data sheet available online

### ■ Use



### ■ Insertion and fixing

