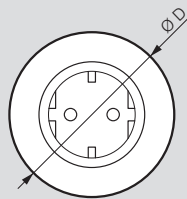
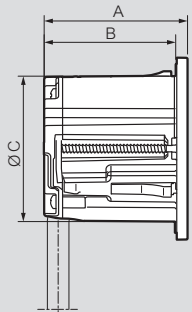


Incara™ Disq 60 - German standard

technical characteristics

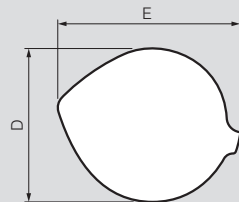
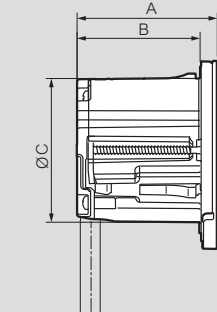
■ Dimensions (mm)

Incara Disq 60 without cover
Cat.Nos 6 547 25/25F/26/26F/27/
27F/30/30F/31/31F/32/32F



A	B	C	D
54.5	50	59	74

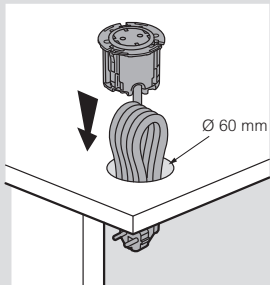
Incara Disq 60 with cover
Cat.Nos 6 547 28/28F/33/33F



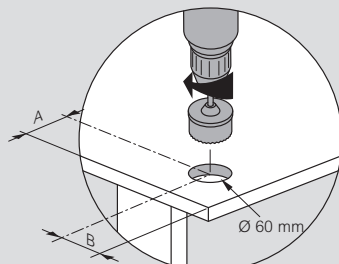
A	B	C	D	E
57	50	59	77	91

■ Positioning

Installing in office furniture

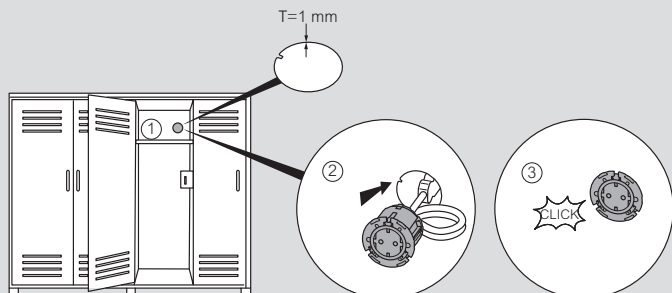


Drilling dimensions

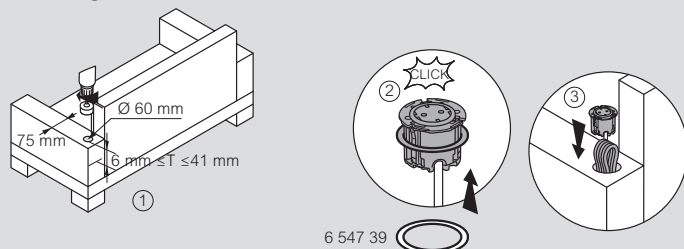


	A > 95	B > 95
	A > 125	B > 95

Installing in metal furniture such as a locker



Installing in a sofa

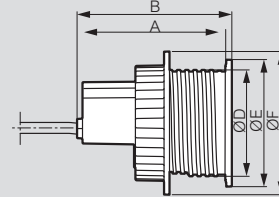
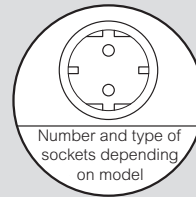


6 547 39

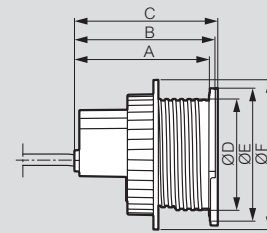
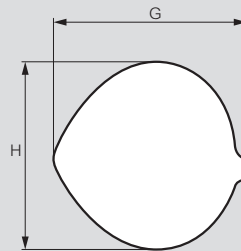
Incara™ Disq 80 - German standard

technical characteristics

■ Dimensions (mm)



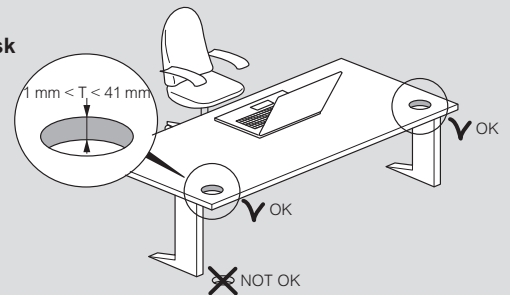
Cat.Nos	A	B	C	D	E	F
6 547 10/10F/11/11F/12/12F	109	113	-	78	93	105
6 547 14/14F/15/15F/16/16F			115			



Cat.Nos	A	B	C	D	E	F	G	H	
6 547 13/13F	109	113	116	78	93	105	105	114	96

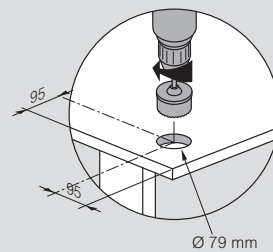
■ Positioning

Installing in a desk

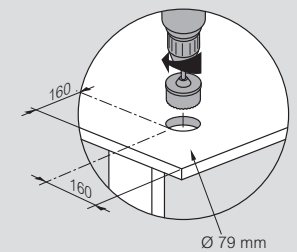


■ Drilling dimensions

Incara Disq 80 without cover
Cat.Nos 6 547 10/10F/11/11F/12/12F/
14/14F/15/15F/16/16F



Incara Disq 80 with cover
Cat.Nos 6 547 13/13F



■ Insertion

