

Sounders, sounder beacons, electromagnetic door holder and safety electrical power supplies



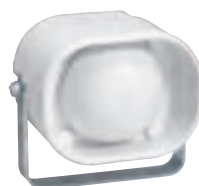
0 415 07



0 405 90



0 405 86



0 405 94



0 406 87

| Pack | Cat.Nos | Sounders |
|------|----------|---|
| 1 | 0 415 07 | Conform to EN 54-3 standard and CE CPR approved IP 41 - IK 04 Mosaic device - 2 modules Sound level: 70 dB at 2 meters - NF S 32-001 sound Voltage range: 10 - 42 V Average consumption: 12 V _{DC} : 5 mA; 24 V _{DC} : 9 mA |
| 1 | 0 405 80 | IP 42 - IK 07 Surface-mounting Sound level: 90 dB at 2 meters - NF S 32-001 sound Voltage range: 10 - 58 V Average consumption: 12 V _{DC} : 5 mA; 24 V _{DC} : 9 mA; 48 V _{DC} : 13 mA |
| 1 | 0 405 90 | IP 65 - IK 07 Surface-mounting Sound level: 90 dB at 2 meters - NF S 32-001 sound Voltage range: 10 - 42 V Average consumption: 12 V _{DC} : 5 mA; 24 V _{DC} : 9 mA |
| 1 | 0 405 86 | 2 cable glands supplied IP 21 - IK 07 Flush-mounting in false ceiling Sound level: 90 dB at 2 meters - NF S 32-001 sound Voltage range: 10 - 58 V Average consumption: 12 V _{DC} : 5 mA; 24 V _{DC} : 9 mA; 48 V _{DC} : 13 mA |
| 1 | 0 405 94 | IP 54 - IK 07 Surface-mounting Sound level: 105 dB at 2 meters - Possibility to choose the sound, by dip switch: NF S 32-001 or BS 58391 (alert or alarm) or ISO 8201 or DIN 33404-3 or SS031711 or NEN2575 Voltage range: 14 - 58 V Average consumption: 24 V _{DC} : 140 mA; 48 V _{DC} : 80 mA |

| Pack | Cat.Nos | Sounder beacons |
|------|----------|---|
| 1 | 0 405 91 | Conform to EN 54-3 standard and CE CPR approved Sound level: 90 dB at 2 meters - NF S 32-001 sound Red flash Voltage range: 10 - 58 V Average consumption: 12 V _{DC} : 23 mA; 24 V _{DC} : 22 mA; 48 V _{DC} : 23 mA IP 65 - IK 07 Surface-mounting |
| 1 | 0 405 87 | 2 cable glands supplied IP 21 - IK 07 Flush-mounting in false ceiling |

| Pack | Cat.Nos | Electromagnetic door holder |
|------|----------|---|
| 1 | 0 406 87 | Automatically closes fire doors by current breaking White metal connection box with electromagnetic element and local push button Wall surface-mounting Metal washer hinged for door fixing Operating voltage: 24/48 V _{DC} Average consumption: 24 V _{DC} : 23 mA; 48 V _{DC} : 45 mA Power: 0.6 W / 24 V; 2.2 W / 48 V Strength: 200 N (or 20 Kg minimum) Conform to EN 11-55 standard IK 07 |

| Pack | Cat.Nos | Safety electrical power supplies |
|------|----------|--|
| 1 | 0 405 09 | Conform to EN 54-4, EN 12101-10 CE CPR approved For DC power supply of fire safety installations such as fire doors, smoke removal devices, ... Power supply 3 A - 24 V |
| 1 | 0 407 49 | 2 batteries 12 V 7 Ah (Pb) Cat.No 0 407 49 (not supplied) Battery 12 V 7 Ah (Pb) - V0 (UL 94) |

| Pack | Cat.Nos | Visual alarm devices |
|------|----------|---|
| 1 | 0 405 96 | Conform to EN 54-23 standard and CE CPR approved Mosaic device - 2 modules Delivered with support frame and dedicated plate IP 40 - IK 04 Red flashing light 2 cd synchronizable with a frequency of 1 Hz Voltage range: 10 - 58 V Average consumption: 12 V _{DC} : 14 mA; 24 V _{DC} : 16 mA; 48 V _{DC} : 18 mA |
| 1 | 0 405 98 | Surface-mounting IP 45 - IK 07 Red flashing light 2/10 cd synchronizable with a frequency of 1 Hz Voltage range: 9 - 58 V Average consumption (2 cd): 12 V _{DC} : 14 mA; 24 V _{DC} : 16 mA; 48 V _{DC} : 18 mA Average consumption (10 cd): 12 V _{DC} : 38 mA; 24 V _{DC} : 40 mA; 48 V _{DC} : 42 mA |