

X-light 360

indoor self-contained emergency lighting luminaire LED

X-light 360

indoor self-contained emergency lighting luminaires



6 600 32



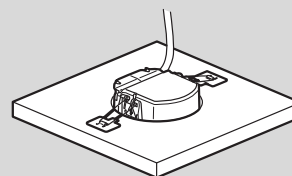
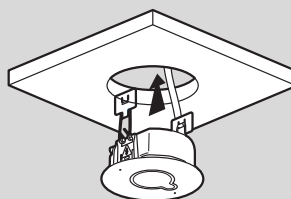
6 600 32 + 6 601 93 + 6 616 70

Spare batteries selection chart **p. 914**

LED non-maintained and maintained units
 Certified to IEC and EN 60598-2-22 standards
 Automatic terminals with high capacity: 2 x 2.5 mm²
 IP 42 - IK 07
 Duration: 1 to 3 hours. Ni-Cd or Ni-MH batteries
 Charge monitor with a green LED. Opal diffuser
 Power supply: 230 V~ ± 10% - 50/60 Hz. Class II

Pack	Cat.Nos	Standard luminaires
1	6 600 32	Require normal lighting manual switching off in order to test emergency lighting Non-maintained 100 lm - 1h (LEDs) Maintained/Non-maintained (M/NM) Can also operate in Non-maintained mode according to the wiring of normal lighting
1	6 600 42	100 lm - 1h (LEDs)
1	6 600 48	100 lm - 3h (LEDs)
1	6 600 44	200 lm - 1h (LEDs)
1	6 600 47	200 lm - 2h (LEDs)
1	6 600 45	350 lm - 1h (LEDs)
Autotest luminaires		
Autotest luminaires incorporate an automatic self-testing system in order to check the emergency mode Tests result is visible on 2 signalling LEDs (green-OK and yellow-defective) Rest mode via non-polarised remote control Cat.Nos 0 039 00 or 0 039 01 (no wiring direction)		
Maintained/Non-maintained (M/NM) Can also operate in Non-maintained mode according to the wiring of normal lighting		
1	6 601 42	100 lm - 1h (LEDs)
1	6 601 46	100 lm - 3h (LEDs)
1	6 601 47	200 lm - 2h (LEDs)
1	6 601 45	350 lm - 1h (LEDs)
Accessory		
1	6 601 93	Vertical signalling plate Vertical transparent plate for evacuation signalling (must be completed with adhesive evacuation label)

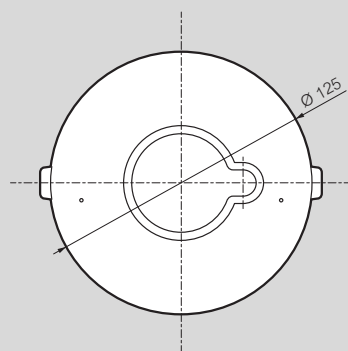
Installation Flush-mounting



With vertical signalling plate Cat.No 6 601 93



Dimensions (mm)



Ceiling cutting

