

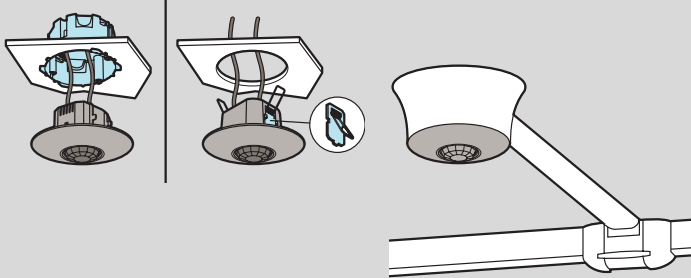
Presence sensors

technical characteristics

■ Ceiling-mounting



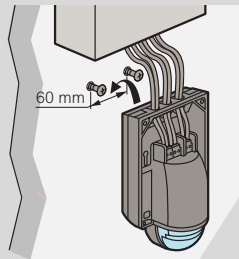
All sensors have built-in bracket systems that enable ceiling-mounting. Most sensors are suitable for standard EU boxes (diam 65). This is important for applications where the ceiling is unavailable for sensor installation



■ Wall-mounting



Wall-mounting sensors have a mounting base. For easy and quick mounting, the base has to be fixed against the wall, the wires connected to the automatic wiring block. Then the sensor part is fitted onto the base



■ Settings

Most sensors feature Smart Factory Set technology, adjustments are typically not needed after installation
If adjustments need to be made (due to last minute changes in furniture or fixture placement), sensitivity and time delays should match the activity levels of the monitored spaces

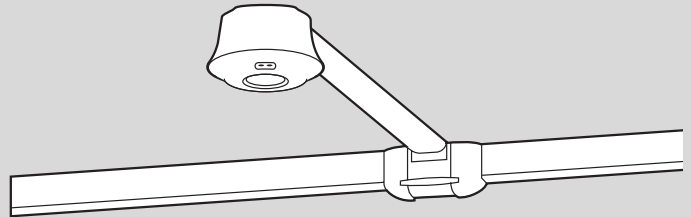
Configuration tool and accessories

■ Customising settings on-site

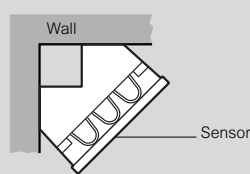
All sensors are preset in the factory

- 500 lux light level threshold for ceiling-mounting sensors and 300 lux for surface-mounting sensors
 - 15-minute time delay and walkthrough function activated
- The configuration tools are used to adjust the preset settings and the detection sensitivity

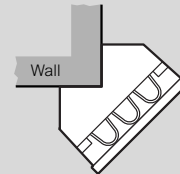
■ Installing surface-mounting boxes Cat.No 0 488 75



■ Installing fixing accessory Cat.No 0 489 72 on an angle (view from above)



Mounting on internal angle



Mounting on external angle