

# Batibox™

flush-mounting boxes for masonry



0 819 40

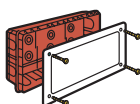
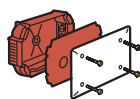


0 819 60

Pack Cat.Nos **Complete junction boxes**

**Rectangular with knockout cable entries**  
Boxes supplied with cover and screws  
Supplied with plaster shield (except for Cat.No 0 892 71)

Pack	Cat.Nos	Box ext. dim. (mm)	Cover dim. (mm)
10	0 892 71 <sup>1</sup>	85 x 85 x 40	100 x 100
10	0 892 72 <sup>1</sup>	120 x 120 x 40	140 x 140
10	0 892 73 <sup>1</sup>	165 x 115 x 40	190 x 135
10	0 892 74 <sup>1</sup>	175 x 175 x 40	195 x 195
10	0 892 75 <sup>1</sup>	230 x 180 x 50	255 x 210



**Large capacity**  
Accept Ø25 and 32 tubes

2	0 892 77	400 x 180 x 70 mm
2	0 892 78	390 x 245 x 70 mm

**Box for concrete walls**

**One-gang box**  
For mounting  
- in wooden casing alone,  
- with blanking cover Cat.No 0 819 72  
Fixing of screw or claw-mounting wiring accessories with ring Cat.No 0 819 60  
Can be combined side by side with cover Cat.No 0 819 71 (consult us)



**Cover for concrete boxes**  
Installation/blanking cover used for installation on wooden casing or for blanking in back to back mounting



**Ring**  
Ø64 mm ring for 1-gang box  
Cat.No 0 819 60  
Supplied with screws



**Accessory**

**Screw**  
Long screw Ø3 mm length 40 mm for all Batibox boxes



**Fixing accessory**

**1** 0 778 83  
Fits on Batibox boxes for masonry and concrete, for fixing directly in the wall  
The Soliroc plate can be fixed onto this accessory with no need for drilling or using plugs in the wall  
1-gang, can be joined to create 2-gang

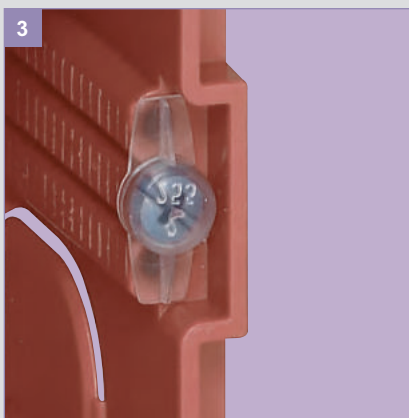
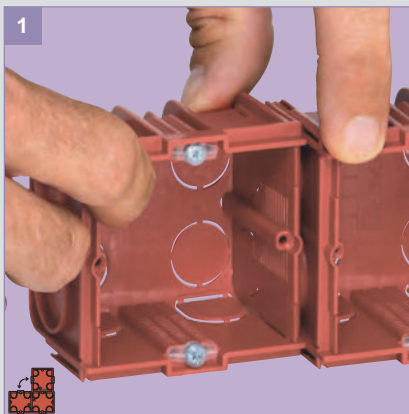


<sup>1</sup>: Box made from plastic material from the recycling of electrical products and post-consumer waste

# Batibox™

flush-mounting boxes for masonry

## Installation



Horizontal or vertical joining of 1 gang boxes (Cat.No 0 801 41)

The sides can be removed before or after joining

The screws are supplied with protection cap (against plaster)