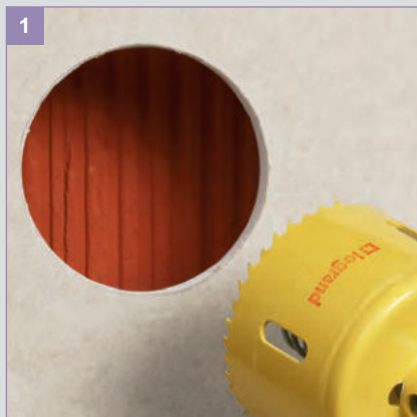


Batibox™

flush-mounting boxes for dry partitions

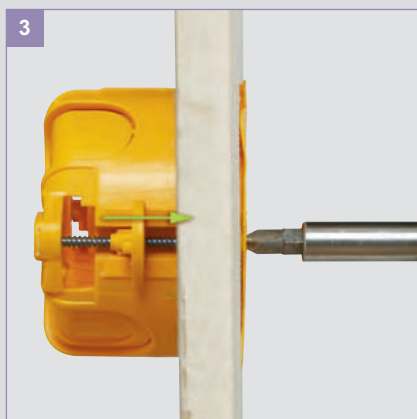
Installation



1
Hole cutter saw Ø67
Box Ø67 mm, more
space for cabling



2
Retractable fixing claws
for a better comfort
during installation



3
Fixing claws adapted to
the thickness of the wall
Automatic positioning,
even with an electric
screwdriver



4
Large space to improve
fixing (according to the
drilling Ø67 to 68 mm)