

Niloé™

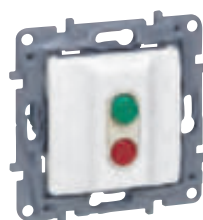
switches, push-buttons and accessories



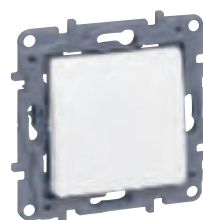
7 645 03



7 645 09



7 645 18



7 645 22

Mechanisms supplied with cover plates and support frames in flow-pack
To be equipped with plates (p. 749)
Fixing with screws or claws (supplied)
Automatic or screw terminals

Pack	Cat.Nos	One-way switches - 10 AX - 250 V~
20 20	7 645 00 7 646 00	Can be transformed into lighting function with accessory Cat.No 7 645 21/26 (except for 3-gang switches and switches with single live) 1-gang Automatic terminals ○ White ● Ivory
20 20	7 645 06 7 646 06	2-gang Automatic terminals ○ White ● Ivory
20 20	7 645 03 7 646 03	3-gang Screw terminals ○ White ● Ivory
20 20	7 645 05 7 646 05	2-gang - with single live Automatic terminals ○ White ● Ivory
20 20	7 645 01 7 646 01	Two-way switches 10 AX - 250 V~ Can be transformed into lighting function with accessory Cat.No 7 645 21/26 (except for IP 44 switch) Automatic terminals 1-gang ○ White ● Ivory
20 20	7 645 02 7 646 02	2-gang ○ White ● Ivory
10 10	7 645 04 7 646 04	Intermediate switches 10 AX - 250 V~ Enable you to add a third control point in a two-way switch installation. Automatic terminals ○ White ● Ivory
10 10	7 645 09 7 646 09	Two-way switch 10 AX + push-button 6 A 250 V~ Automatic terminals ○ White ● Ivory

Pack	Cat.Nos	Double-pole switches - 16 A - 250 V~
10 10	7 645 17 7 646 17	1-gang Automatic terminals ○ White ● Ivory
20 20	7 645 18 7 646 18	Dismatic switches Screw terminals ○ White - 15 A ● Ivory - 15 A
20 20	7 645 19 7 646 19	○ White - 20 A ● Ivory - 20 A
20 20	7 645 07 7 646 07	Push-buttons - 6 A - 250 V~ NO-NC contact push-buttons Automatic terminals Can be transformed into lighting function with accessory Cat.No 7 645 21/26 (except IP44 switch) 1-gang ○ White ● Ivory
20 20	7 645 08 7 646 08	2-gang ○ White ● Ivory
20 20	7 645 22 7 646 22	1-gang - illuminated Supplied with 230 V LED lamp - Cat.No 7 645 21/26 ○ White ● Ivory
10 10 10	7 645 21 7 645 23 7 645 26	Accessories LED lamps To transform single controls into illuminated ones Indicator LED lamp - 230 V 12/24 V Illuminated LED lamp - 230 V low consumption
1	0 401 49	Active Power Bleeder Allows 2-wire electronic switches without neutral to be compatible with all loads (LED, fluocompact...)