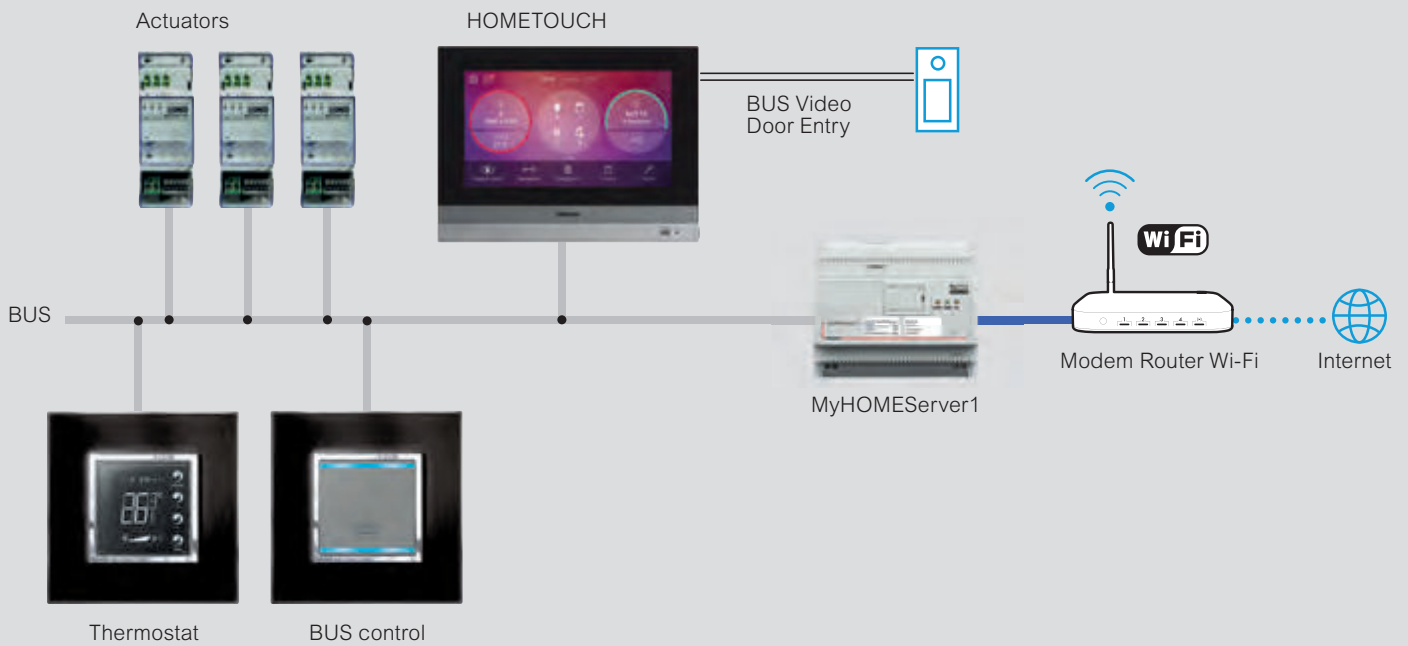


MyHOME

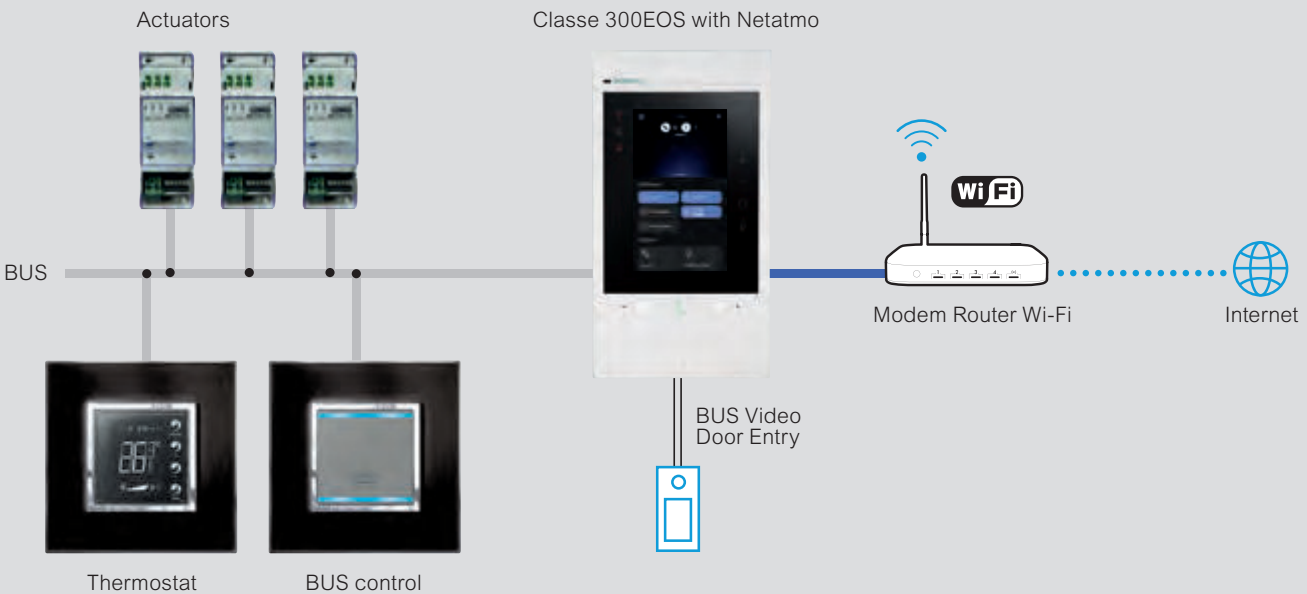
BUS home system management

MyHOME system with MyHOMEServer1 as server and HOMETOUCH used as video door entry internal unit



If MyHOMEServer1 is used to realize the MyHOME installation, the HOMETOUCH can be used as smart home touch screen and also as video door entry internal unit. Remote management of door entry function via the Door Entry App. for HOMETOUCH

MyHOME system with Classe300EOS with Netatmo used as both, server and video door entry internal unit



If Classe300EOS with Netatmo is used to realize the MyHOME installation, the device will work as both, smart home touch screen and video door entry internal unit. Remote management of door entry function via the Home + Security App.