

## Arteor™ with Netatmo - British standard connected light switches for system integrators

## Arteor™ with Netatmo - British standard connected light switches with dimmer option



5 746 23



5 746 28

Plate selection charts p. 594 to 595

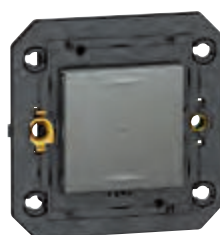
These connected light switches can be associated only to a Zigbee 3.0 third party gateway to create their own connected home Zigbee Certified Product

Pack	Cat.Nos	Connected light switches without neutral, 100 W LED, for system integrators
		Compact mechanism for greater wiring space Mechanisms supplied with cover plates and support frames, to be equipped with plates (p. 594 to 595) Can't be associated or activated from the Legrand Home + Control App. For local or remote control of lighting Compatible with all loads: - LEDs and CFL lamps: 15 - 100 W LED - Incandescent and halogen lamps: 15 - 500 W - ELV halogen and CFL lamps with separate ballast: 15 - 500 VA Supplied with a bleeder Can be installed in place of an existing switch in a flush-mounting box depth 25 mm
1	5 746 17	<ul style="list-style-type: none"> <li>○ White</li> <li>● Magnesium</li> <li>● Champagne</li> <li>● Soft Alu</li> </ul>
1	5 746 18	
1	5 746 20	
1	5 746 19	
1	5 746 21	<ul style="list-style-type: none"> <li>○ White</li> <li>● Magnesium</li> <li>● Champagne</li> <li>● Soft Alu</li> </ul>
1	5 746 22	
1	5 746 24	
1	5 746 23	
1	5 746 25	<ul style="list-style-type: none"> <li>○ White</li> <li>● Magnesium</li> <li>● Champagne</li> <li>● Soft Alu</li> </ul>
1	5 746 26	
1	5 746 28	
1	5 746 27	

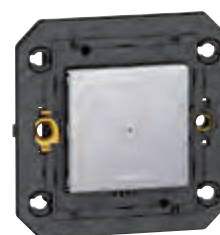
### Step 2: Connected products



Home + Control



5 746 42



5 746 39

Plate selection charts p. 594 to 595

Used to create your connected installation, require prior installation of a gateway pack for connected installation Zigbee Certified Product

Pack	Cat.Nos	Connected light switches with dimmer option, wired
		Compact mechanism for greater wiring space Mechanisms supplied with cover plates and support frames, to be equipped with plates (p. 594 to 595) For local or remote ON/OFF or dimming control of lighting Can be controlled by one or several connected wireless light switches or mechanical push-buttons without lamps Memory level function Can be installed in place of an existing switch in a flush-mounting box depth 25 mm Dimmer mode and locator/indicator function can be activated from the Home + Control App.
		<b>With neutral, 150 W LED, 1-gang</b> Compatible with all loads: - Dimmable LEDs and CFL lamps: 150 W LED - Incandescent and halogen lamps: 150 W - ELV halogen and CFL lamps with separate ballast: 150 VA
1	5 746 41	<ul style="list-style-type: none"> <li>○ White</li> <li>● Magnesium</li> <li>● Champagne</li> <li>● Soft Alu</li> </ul>
1	5 746 42	
1	5 746 44	
1	5 746 43	
		<b>Without neutral, 5-125 W LED, 1-gang</b> Compatible with all loads: - Dimmable LEDs and CFL lamps: 125 W LED - Incandescent and halogen lamps: 125 W - ELV halogen and CFL lamps with separate ballast: 125 VA Supplied with a bleeder
1	5 746 37	<ul style="list-style-type: none"> <li>○ White</li> <li>● Magnesium</li> <li>● Champagne</li> <li>● Soft Alu</li> </ul>
1	5 746 38	
1	5 746 40	
1	5 746 39	