

Arteor™ with Netatmo - British standard

connected gateway pack

Must be ordered for any connected installation

Step 1: Gateway pack for a connected home



Home + Control



5 746 03

Plate selection charts p. 594 to 595

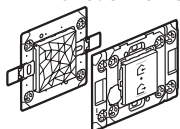
Used to create the radio network and the Wi-Fi connection of the connected installation

Enables remote control of your home (lighting, curtains/roller blinds, temperature and electrical appliances) using a smartphone via the Home + Control App. and/or voice control with a voice assistant

Must be ordered to start any connected installation
To be completed by adding individual connected products

2,4 GHz Wi-Fi connection required

Pack	Cat.Nos	Connected gateway pack
1	5 746 01	<p>Used to create the radio network and the Wi-Fi connection</p> <p>Composition:</p> <ul style="list-style-type: none"> - 1 flush-mounted Zigbee/Wi-Fi gateway <p>Mechanism supplied with cover plate and support frame, to be equipped with plates (p. 594 to 595)</p> <p>Allows the connection of the installation to the Wi-Fi network and enables control through the Home + Control App. and voice assistants (Google Assistant, Amazon Alexa, Apple Siri)¹⁾</p> <p>Can be installed in place of an existing product</p> <p>Suitable for flush-mounting box min. depth 35 mm</p> <ul style="list-style-type: none"> - 1 Home/Away wireless master switch with preset life scenes <p>Supplied with cover plate and multi-standard support frame (with removable fins)</p> <p>To be equipped with 2-module plates (p. 594 to 595)</p> <p>Used to create the radio network and to control life scenes. Life scenes can be customised in the Home + Control App.</p> <p>Supplied with CR2032 3V long-life battery for power supply and removable stickers for fixing the control unit on any substrate</p> <p>LED function for low battery indication</p> <ul style="list-style-type: none"> ○ White ● Magnesium ● Champagne ● Soft Alu
1	5 746 02	
1	5 746 04	
1	5 746 03	



1: Availability of voice assistants to be checked in your country

Legrand's Home + Control App. available from **Google Play and App Store**



Red catalogue numbers: New products

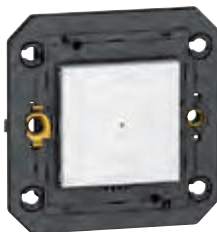
Arteor™ with Netatmo - British standard

connected light switches

Step 2: Connected products



Home + Control



5 746 05



5 746 14

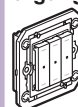


5 742 43

Plate selection charts p. 594 to 595

Used to create your connected installation, require prior installation of a gateway pack for connected installation
Zigbee Certified Product

Pack	Cat.Nos	Connected light switches with neutral, 150 W LED, wired
1	5 746 05	<p>Compact mechanism for greater wiring space</p> <p>Mechanisms supplied with cover plates and support frames, to be equipped with plates (p. 594 to 595)</p> <p>For local or remote control of lighting</p> <p>Can be controlled by one or more connected wireless light switches</p> <p>Compatible with all loads:</p> <ul style="list-style-type: none"> - LEDs and CFL lamps: 150 W LED - Incandescent and halogen lamps: 500 W - ELV halogen and CFL lamps with separate ballast: 300 VA <p>Can be installed in place of an existing switch in a flush-mounting box depth 25 mm</p> <p>Locator and indicator function can be activated from the Home + Control App.</p>
1	5 746 06	
1	5 746 08	
1	5 746 07	
1	5 746 09	<p>1-gang</p> <ul style="list-style-type: none"> ○ White ● Magnesium ● Champagne ● Soft Alu
1	5 746 10	
1	5 746 12	
1	5 746 11	
1	5 746 13	<p>2-gang</p> <ul style="list-style-type: none"> ○ White ● Magnesium ● Champagne ● Soft Alu
1	5 746 14	
1	5 746 16	
1	5 746 15	
1	5 746 13	<p>3-gang</p> <ul style="list-style-type: none"> ○ White ● Magnesium ● Champagne ● Soft Alu
1	5 746 14	
1	5 746 16	
1	5 746 15	



Pack	Cat.Nos	Connected micromodule switches with neutral
1	5 742 43	<p>Used to connect lights with a ceiling box installation</p> <p>Can be controlled by one or more wireless light switches and/or mechanical push-buttons</p> <p>ON/OFF switch 100 W LED, wired</p> <p>Compatible with all loads:</p> <ul style="list-style-type: none"> - LEDs and CFL lamps: 100 W LED - Incandescent and halogen lamps: 300 W - ELV halogen and CFL lamps with separate ballast: 250 VA <p>Switch with dimmer option, 150 W LED, wired</p> <p>For local or remote ON/OFF / dimming control of lighting</p> <p>Dimmer mode can be activated from the Home + Control App.</p> <p>Memory level function</p>
1	0 648 99	

