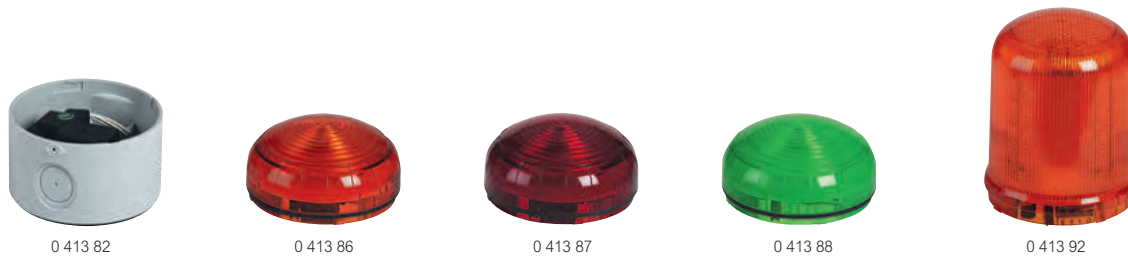


Illuminated signalling

equipment and accessories



Technical characteristics p. 553

Pack	Cat.Nos	Bases for LED beacons and multi-sound electronic sirens
1	0 413 81	For LED beacons Cat.Nos 0 413 86/87/88/92/93 and multi-sound electronic sirens Cat.No 0 413 98 (p. 394) 12/24 V~ and = IP 65, side wiring, equipped with 2 cable glands Dimensions : height 46 mm, Ø92 mm
1	0 413 82	40/80 V~ and = IP 65, side wiring, equipped with 2 cable glands Dimensions : height 46 mm, Ø92 mm
1	0 413 83	120/240 V~ IP 65, side wiring, equipped with 2 cable glands Dimensions : height 46 mm, Ø92 mm

Pack	Cat.Nos	Compact size LED beacons
1	0 413 86	To be equipped with base Cat.No 0 413 81/82/83 Adjustable light intensity (3 levels) 5 separate light effects: steady, single or double flash, strobe effect, random Can be controlled via independent electrical contacts and/or push-buttons Dimensions : height 42.5 mm, Ø92 mm IP65 - IK 08 Power supply from 12 V~ and = to 230 V~ depending on the installed base 580 Candelas ● Orange
1	0 413 87	640 Candelas ● Red
1	0 413 88	680 Candelas ● Green

Pack	Cat.Nos	Large size LED beacons
1	0 413 92	To be equipped with base Cat.No 0 413 81/82/83 3 separate light effects: steady, rotating, flashing Can be controlled via independent electrical contacts Dimensions : height 110 mm, Ø92 mm IP65 - IK 08 Power supply from 12 V~ and = to 230 V~ depending on the installed base 7 Candelas ● Orange
1	0 413 93	5 Candelas ● Red