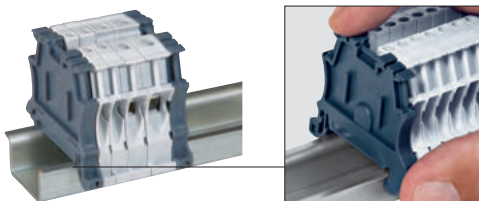


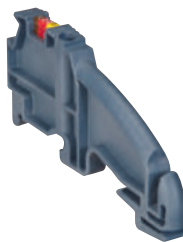
Viking™ 3 accessories for terminal blocks



End stop 0 375 10, screwless mounting



0 375 11 with label holder 0 395 96



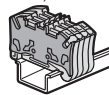
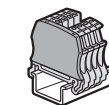
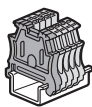
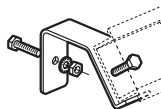
0 375 12 with CAB 3 labelling



0 375 13 with label holder Duplix 0 384 98

Technical characteristics p. 469

Pack	Cat.Nos	Rails for cutting to length
10	0 374 04	Length 2 m └ EN 60715 depth 7.5 mm
10	0 374 07	└ depth 15 mm
10	0 477 22	└ depth 7.5 mm with oblong holes
10	0 477 23	└ depth 15 mm with oblong holes
10	0 394 49	45° mounting bracket Set of 2 supports for 45° rail slope Supplied with 4 M6 screws, nuts and washers (PC-ABS)
20	0 364 66	Adaptor For mounting on rail └ equipment fitting on rail └ Width 17 mm Increase equipment height for 6 mm PC - ABS
50	0 375 10	End stops Accept CAB 3 markers Automatic 6 mm pitch Screwless mounting For rails └ depth 15 mm and └ EN 60715 depth 7.5 mm and 15 mm Accepts label holder Cat.No 0 395 96 Acts as end cap for screw terminal blocks 1 entry/1 outlet 5, 6, 8 and 10 mm pitch
20	0 375 11	8 mm pitch For rails └ depth 15 mm and └ EN 60715 depth 7.5 mm and 15 mm Accepts label holder Cat.No 0 395 96
10	0 375 12	10 mm pitch For rails └ depth 15 mm and └ EN 60715 depth 7.5 mm (except for rail fixed on plate) and 15 mm For supporting protection or shielding bar: - Brass bar Cat.Nos 0 373 00/01 - Copper bar 12 x 4 mm with clamps Cat.No 0 373 02 - IP 2X terminal block with flat steel bar 12 x 2 mm Cat.No 0 048 19 (p. 298) - Copper bar 12 x 4 mm Cat.No 0 373 49 or 0 373 89 (p. 432) - Shielding bar 10 x 3 mm Cat.No 0 375 34 (p. 464)
20	0 375 13	12 mm pitch For rails └ EN 60715, └ depth 15 mm and └ EN 60715 depth 7.5 mm and 15 mm After cutting out the upper divider, can be labelled using Duplix label holder Cat.No 0 384 98



Pack	Cat.Nos	Identification accessories
20	0 395 96	Transparent label holder with variable angle Fixing on end stops Cat.Nos 0 375 10/11 Supplied with label 32 x 9.5 mm
20	0 395 97	Can take label Cat.No 0 395 97 Label for engraving 28 x 9.5 mm For label holder Cat. No 0 395 96. Flexible ABS
10	0 395 98	White background, black engraving Black felt tip pen for permanent marking
		End caps Grey
100	0 375 50	For screw terminal blocks 1 entry/1 outlet 5, 6, 8 and 10 mm pitch
20	0 375 51	1 entry/1 outlet 12 and 15 mm pitch
20	0 375 52	2 entries/2 outlets
20	0 375 53	2 levels
20	0 375 54	3 levels
20	0 375 55	Disconnect type 6 mm pitch and function blocks 5 mm pitch
20	0 375 56	Disconnect type fuse cartridge 5 x 20 with screwed plug
10	0 375 57	Disconnect for measurement
50	0 375 86	For spring terminal blocks with 5 mm pitch Allows the block to become 6 mm pitch and take a flexible wire fitted with a 4 mm ² ferrule (p. 472)
50	0 375 87	1 entry/1 outlet
20	0 375 88	1 entry/2 outlets
20	0 375 89	2 entries/2 outlets
20	0 375 89	2 levels
20	0 375 90	For spring terminal blocks with 6 mm pitch Disconnect type
		Connection of protective conductors
1	0 373 00	Additional brass bar Length 416 mm, 12 x 6.5 mm cross-section Fits directly on integrated supports in XL ³ 160 cabinet or on rail └ with wire guides Cat.No 0 200 94 or on support end stop Cat.No 0 375 12 - 36 holes Ø5.3 mm (1.5 to 10 mm ²) - 2 holes Ø9 mm (35 mm ²)
1	0 373 01	Brass bar for protective conductor Length 456 mm, 12 x 6.5 mm cross-section - 36 holes Ø5.3 mm (1.5 to 10 mm ²) - 2 holes Ø9 mm (35 mm ²) - 4 holes Ø6.5 mm (2.5 to 16 mm ²) Fits onto functional uprights with supplied lugs
1	0 373 02	Flat copper bar 12 x 4 with clamps Supplied with clamp connectors (40 x 1.5 to 4 mm ² , 4 x 6 to 16 mm ² , 1 x 35 mm ²) Length 455 mm Fits onto functional uprights in XL ³ 400 cabinets and enclosures or on rail with wire guides Cat.No 0 200 94

