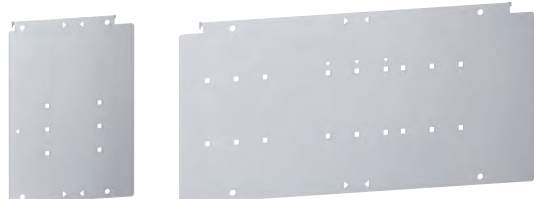


## XL<sup>3</sup> S 4000

equipment for mounting DPX-IS 250 on a plate

## XL<sup>3</sup> S 4000 - equipment for mounting

DPX<sup>3</sup> 630 and DRX 630 on a plate



3 374 87

3 374 86



3 389 42

3 382 72

Selection chart **p. 344 to 353**  
Installation principle **p. 368**

### Fixing plates for DPX-IS 250 - horizontal mounting on crosspieces

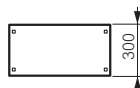
Pack	Cat.Nos	Description
1	3P/4P <b>3 374 87</b>	For 24 and 36-module enclosure

### Fixing plates for DPX-IS 250 - vertical mounting on crosspieces

1	3P/4P <b>3 374 85</b>	For 16-module enclosure
1	<b>3 374 86</b>	For 24 and 36-module enclosure

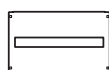
### Faceplates for DPX-IS 250 - horizontal mounting on crosspieces

1	3P/4P 3 389 42	Fixed with 1/4 turn screws or screws Height: 300 mm For 24-module enclosure
1	<b>3 389 44</b>	For 36-module enclosure

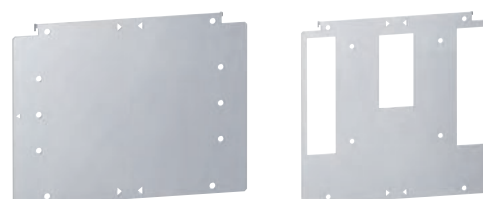


### Faceplates for DPX-IS 250 - vertical mounting on crosspieces

1	3P/4P 3 382 71	Fixed with 1/4 turn screws or screws <b>Height 300 mm</b> For 16-module enclosure
1	<b>3 382 72</b>	For 24-module enclosure
1	<b>3 382 73</b>	For 36-module enclosure

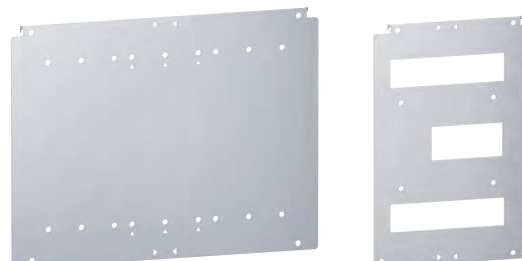


Fixing accessories for faceplates **p. 366**



3 373 81

3 373 84



3 373 69

3 373 75

Selection chart **p. 344 to 353**  
Installation principle **p. 368**

### Fixing plates for DPX<sup>3</sup> 630 and DRX 630 - horizontal mounting on crosspieces

Pack	Cat.Nos	Description
1	3P/4P <b>3 373 81</b>	For devices with or without rotary or motor driven handle For 24 and 36-module enclosure

### DRX/DPX<sup>3</sup> 630 without e.l.c.b, fixed version

1	4P <b>3 373 82</b>	For 36-module enclosure
---	-----------------------	-------------------------

### DPX<sup>3</sup> 630 with e.l.c.b, fixed version

1	3P/4P <b>3 373 84</b>	For 24 and 36-module enclosure
---	--------------------------	--------------------------------

### DPX<sup>3</sup> 630 without e.l.c.b, plug-in version

1	4P <b>3 373 85</b>	For 36-module enclosure
---	-----------------------	-------------------------

### DPX<sup>3</sup> 630 with e.l.c.b, plug-in version

1	3P/4P <b>3 373 86</b>	For 24 and 36-module enclosure
---	--------------------------	--------------------------------

### DPX<sup>3</sup> 630 without e.l.c.b, draw-out version

1	4P <b>3 373 87</b>	For 36-module enclosure
---	-----------------------	-------------------------

### DPX<sup>3</sup> 630 with e.l.c.b, draw-out version

1	3P/4P <b>3 373 83</b>	For 24-module enclosure
---	--------------------------	-------------------------

### DPX<sup>3</sup> 630 transfer switch, fixed version,

1	4P <b>3 373 88</b>	For 24-module enclosure
---	-----------------------	-------------------------

### DPX<sup>3</sup> 630 transfer switch, draw-out version,

1	3P/4P <b>3 373 68</b>	For 16-module enclosure
---	--------------------------	-------------------------

### DRX/DPX<sup>3</sup> 630 without e.l.c.b, fixed version

1	<b>3 373 69</b>	For 24-module enclosure
1	<b>3 373 70</b>	For 36-module enclosure

### DPX<sup>3</sup> 630 with e.l.c.b, fixed version

1	4P <b>3 373 71</b>	For 16-module enclosure
1	<b>3 373 72</b>	For 24-module enclosure
1	<b>3 373 73</b>	For 36-module enclosure

### DPX<sup>3</sup> 630 transfer switch, fixed version,

1	3P/4P <b>3 373 74</b>	For 24 and 36-module enclosure
---	--------------------------	--------------------------------

### DPX<sup>3</sup> 630 without e.l.c.b, plug-in / draw-out version

1	4P <b>3 373 75</b>	For 16 and 24-module enclosure
1	<b>3 373 76</b>	For 16 and 24-module enclosure

### DPX<sup>3</sup> 630 with e.l.c.b, plug-in / draw-out version

1	3P/4P <b>3 373 77</b>	For 36-module enclosure
---	--------------------------	-------------------------

### DPX<sup>3</sup> 630 without e.l.c.b, plug-in version

1	4P <b>3 373 78</b>	For 36-module enclosure
---	-----------------------	-------------------------

### DPX<sup>3</sup> 630 with e.l.c.b, plug-in version

1	3P/4P <b>3 373 79</b>	For 36-module enclosure
---	--------------------------	-------------------------

### DPX<sup>3</sup> 630 without e.l.c.b, draw-out version

1	4P <b>3 373 80</b>	For 36-module enclosure
---	-----------------------	-------------------------

### DPX<sup>3</sup> 630 with e.l.c.b, draw-out version

1	3P/4P <b>3 373 81</b>	For 36-module enclosure
---	--------------------------	-------------------------