

## DPX<sup>3</sup> 630

### earth leakage modules



0 260 63

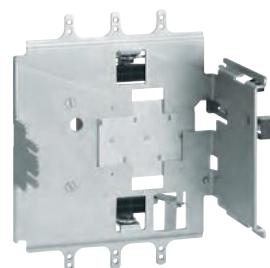
Pack	Cat.Nos	Earth leakage modules
		<p>Can be fitted onto DPX<sup>3</sup>/DPX<sup>3</sup>-I 630</p> <p>Adjustable, sealable sensitivity: 0.03 - 0.3 - 1 - 3 A</p> <p>Adjustable, time delay: 0 - 0.3 - 1 - 3 s</p> <p>Test push-button</p> <p>Reset push-button</p> <p>Remote earth fault signalling contact</p> <p>Switch for mechanical tests (installation insulation test)</p> <p>Mounted underneath</p> <p>230-500 V~</p>
		<p><b>Standard</b></p> <p>In (A)</p>
1	3P   4P 0 260 60   0 260 61	400
1	0 260 64   0 260 65	630
		<p><b>LED version</b></p> <p>Monitors the isolation state of the installation via a series of LEDs</p>
		In (A)
1	4P 0 260 63	400
1	0 260 67	630

## DPX<sup>3</sup> 630

### equipment and accessories



4 222 22



4 222 32

Pack	Cat.Nos	Plug-in version
		<p>A plug-in is a DPX<sup>3</sup> fitted with special terminals and mounted on a plug-in base</p>
1	3P   4P 4 222 20   4 222 21	<p><b>Special terminals for plug-in/draw-out base</b></p> <p>Set of incoming and outgoing terminals (6 terminals for 3P DPX<sup>3</sup> or 8 terminals for 4P DPX<sup>3</sup>)</p>
		<p><b>Bases for DPX<sup>3</sup> only</b></p> <p>Accept DPX<sup>3</sup>/DPX<sup>3</sup>-I fitted with special terminals</p>
1	4 222 22   4 222 23	Front terminal mounting base
1	4 222 24   4 222 25	Flat rear terminal mounting base
		<p><b>Bases for DPX<sup>3</sup> with earth leakage module</b></p>
1	4P 4 222 26	Front terminal mounting base
1	4 222 27	Flat rear terminal mounting base
		<p><b>Accessories</b></p>
1	4 222 28	Set of 2 extractor handle
1	4 222 29	Set of connectors (24-pin)
		<p><b>Draw-out version</b></p>
		<p>A DPX<sup>3</sup> draw-out version is a plug-in DPX<sup>3</sup> fitted with a "Debro-lift" mechanism which can be used to withdraw the DPX<sup>3</sup> while keeping it on its base</p>
		<p><b>"Debro-lift" mechanism</b></p> <p>Supplied with a rigid slide and handle for drawing-out</p>
1	3P   4P 4 222 31   4 222 32	For DPX <sup>3</sup> base only
1	4 222 33	For DPX <sup>3</sup> base with earth leakage module
		<p><b>Key-lock for "Debro-lift" mechanism</b></p> <p>Enable locking of DPX<sup>3</sup> in drawn-out position</p>
1	4 228 10	Mechanical support for locking DPX <sup>3</sup> only To be equipped with universal key-locks Cat.Nos 4 238 80/81/82/83 (p. 180)
1	4 228 08	Mechanical support for locking motor-driven DPX <sup>3</sup> or DPX <sup>3</sup> equipped with rotary handle To be equipped with universal key-locks Cat.Nos 4 238 80/81/82/83 (p. 180)
		<p><b>Accessories for "Debro-lift" mechanism</b></p>
1	0 265 75	Handle for drawing-out
1	0 265 74	Signalling contact (plugged-in/drawn-out)
		<p><b>Auxiliary contacts</b></p>
1	4 222 30	Automatic auxiliary contacts for DPX <sup>3</sup> draw-out version (up to 2 contacts by DPX <sup>3</sup> )
		<p><b>Plates for transfer switches</b></p>
		<p>Factory assembled</p> <p>A transfer switch plate is composed of one plate with interlock for 2 devices</p>
1	0 264 09	Plate for MCCB or trip-free switch fixed version
1	0 264 04	Plate for MCCB or trip-free switch plug-in and draw-out version