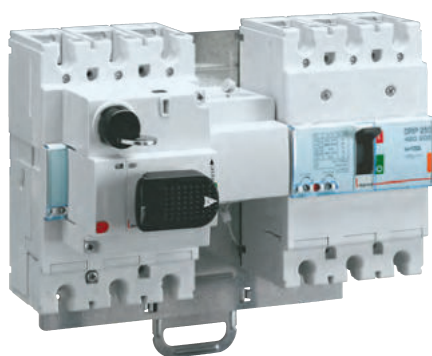


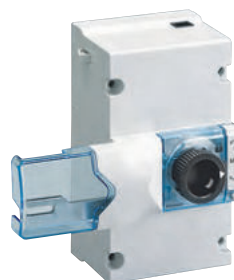
DPX³ 160 and 250 common auxiliaries and accessories



4 210 58 equipped with 2 DPX³ 250 and a rotary handle Cat.No 4 210 00



4 210 00



4 210 60



4 210 10



4 210 11



4 210 16



4 210 22

Pack	Cat.Nos	Fixing plates for transfer switches
1	4 210 58	Plate for mounting and interlocking of 2 DPX ³ For 2 DPX ³ 160 or 2 DPX ³ 250 or 1 DPX ³ 160 and 1 DPX ³ 250 For fixed version
		Rotary handles
		Direct on DPX
1	4 210 00	Standard handle for thermal magnetic DPX ³ without earth leakage module
1	4 210 01	Standard handle for electronic DPX ³ and/or with earth leakage module
1	4 210 02	Handle for emergency use for thermal magnetic DPX ³ without earth leakage module
1	4 210 03	Handle for emergency use for electronic DPX ³ and/or with earth leakage module
		Vari-depth handles
		For all version of DPX ³
1	4 210 04	Standard handle (black)
1	4 210 05	Handle for emergency use (red/yellow)
		Locking accessories
1	4 228 00	Key barrel and Ronis key EL43525 for direct handle
1	4 228 01	Key barrel and Ronis key EL43363 for direct handle
1	4 228 02	Key barrel and Ronis key EL43525 for vari-depth handle
1	4 228 03	Key barrel and Ronis key EL43363 for vari-depth handle
1	4 210 06	Key barrel and flat key N° ABA90GEL6149 for direct handle
1	4 210 07	Key barrel and star key N° HBA90GPS6149 for direct handle
1	4 210 08	Key barrel and flat key N° ABA90GEL6149 for vari-depth handle
1	4 210 09	Key barrel and star key N° HBA90GPS6149 for vari-depth handle
		Disengageable rotary handles
		Direct on DPX
1	4 201 60	Standard handle (black)
1	4 201 73	Handle for emergency use (red/yellow)
		Vari-depth handles
		Comprising: connection rod, bracket, self adhesive drilling template, mounting accessories and door locking mechanism
1	4 201 61	Standard handle (black)
1	4 201 74	Handle for emergency use (red/yellow)
		Locking accessories for disengageable rotary handles
1	4 201 64	Key barrel and flat key for direct handles
1	4 201 65	Key barrel and flat key EL43525 for direct handles
1	4 201 66	Key barrel and flat key EL43363 for direct handles
1	4 201 67	Key barrel and flat key for vari-depth handles
1	4 201 68	Key barrel and flat key EL43525 for vari-depth handle
1	4 210 69	Key barrel and flat key EL43363 for vari-depth handle

Pack	Cat.Nos	Motor-driven handles
1	4 210 60	Motor operators 24 to 230 V~/= Side motor operator
1	4 210 65	Locking accessories Key barrel and flat key N° ABA90GEL6149 for side motor operator
1	4 210 66	Key barrel and star key N° HBA90GPS6149 for side motor operator
1	4 210 67	Padlock for side motor operator
		Auxiliary contact or fault signal
1	4 210 10	1 N/C + 1 N/O auxiliary contact for rotary handles
1	4 210 11	Auxiliary contact or fault signalling contact
		Shunt releases
		Allow remote tripping of a DPX ³ /DPX ³ -I 160/250 and DPX ³ /DPX ³ -I 125/250 HP
1	4 210 12	12 V~/=
1	4 210 13	24 V~/=
1	4 210 14	48 V~/=
1	4 210 15	110-130 V~
1	4 210 16	200-277 V~
1	4 210 17	380-480 V~
		Undervoltage releases
		Allow remote tripping of a DPX ³ /DPX ³ -I 160/250 and DPX ³ /DPX ³ -I 125/250 HP
1	4 210 18	12 V~/=
1	4 210 19	24 V~/=
1	4 210 20	48 V~/=
1	4 210 21	110-130 V~/=
1	4 210 22	200-240 V~
1	4 210 23	277 V~
1	4 210 24	380-415 V~
1	4 210 25	440-480 V~
		Time lag (800 ms) undervoltage release
		Allow remote tripping of a DPX ³ /DPX ³ -I 160/250 and DPX ³ /DPX ³ -I 125/250 HP Prevents false tripping in the event of power supply microbreaks
		Time-lag modules
1	0 261 90	230 V~
1	0 261 91	400 V~
		Release
		To be equipped with a time-lag module Cat.Nos 0 261 90/91
1	4 210 98	For DPX ³ /DPX ³ -I 160/250 and DPX ³ /DPX ³ -I 125/250 HP
		Locking accessory
1	4 210 49	Padlock for locking in "open" position For DPX ³ 160/250 and DPX 125/250 HP



RS 485 communication interface p. 184