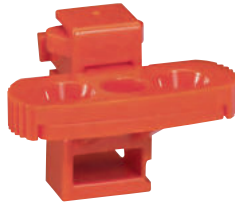


DRX™ 125 HP accessories



0 271 76



0 271 80



0 271 40

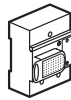


0 271 51



0 271 65

Pack	Cat.Nos		
1	0 271 76		Rotary handles Direct Standard (grey) Vari-depth handle Comprising: connecting rod, bracket, drilling template, mounting accessories, door locking mechanism Standard (grey)
1	0 271 77		
Connection accessories			
Insulating shields Used to isolate the connection between each pole For DRX 125 HP and DRX 250 HP			
1	3P	4P	
1	6 693 00	6 693 01	Set of 2
1	6 693 08	6 693 09	Set of 3
Sealable terminal shields Set of 2			
Cage terminals Up to 125 A			
1	6 693 02	6 693 03	
High capacity cage terminals Up to 125 A			
1	3P	4P	
1	6 693 18	6 693 19	Set of 3
1			Set of 4
Spreaders Set of incoming or outgoing spreaders			
1	4 238 88	4 238 89	
Rear terminals Used to convert a fixed version with front terminals into a fixed version with rear terminals			
1	6 693 06		Set of 3 rear terminals
1		6 693 07	Set of 4 rear terminals
1	0 271 80		Padlock for DRX 125, 250, DRX 125 HP and DRX 250 HP For locking on "OFF" position (up to 3 locks)



Pack	Cat.Nos	
Control and signalling auxiliaries for DRX 125, 250, DRX 125 HP and DRX 250 HP		
Auxiliary contact blocks For left-hand side mounting Up to 250 V~ and =		
1	0 271 40	Block with 1 auxiliary
1	0 271 41	Block with 1 alarm
1	0 271 42	Block with 1 auxiliary + 1 alarm
Shunt trips		
1	0 271 50	12 V~ and =
1	0 271 51	24 V~ and =
1	0 271 52	48 V~ and =
1	0 271 53	100/130 V~
1	0 271 54	200/277 V~
1	0 271 55	380/480 V~
Undervoltage releases		
1	0 271 60	12 V~ and =
1	0 271 61	24 V~ and =
1	0 271 62	48 V~ and =
1	0 271 68	110 V=
1	0 271 63	110/130 V~
1	0 271 64	200/240 V~
1	0 271 67	277 V~
1	0 271 65	380/415 V~
1	0 271 66	440/480 V~

