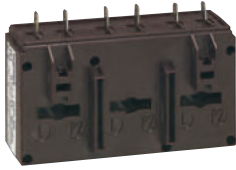


## Current transformers (CT)



4 121 42



4 121 58



4 121 62

Technical characteristics p. 128

Pack	Cat.Nos	<b>Single-phase solid core current transformers</b>	
		Used with ammeters, electricity meters or multi-function measuring units Current at the secondary: 5 A Can be fixed on plate, EN 60715 rail Cat.No 4 121 01/02/03/04/05/06/07, or bars Secondary connected by terminals or lugs Precision class: 0,5 % (1 % for Cat.No 4 121 01/02)	
		<b>For 16 x 12,5 mm bar or Ø21 mm cable</b>	
		Transformation ratio	Output (VA)
1	4 121 01	50/5	1,25
1	4 121 02	75/5	1,5
1	4 121 03	100/5	2
1	4 121 04	125/5	2,5
1	4 121 05	160/5	3
1	4 121 06	200/5	4
1	4 121 07	250/5	5
		<b>For 32,5 x 10,5 and 25,5 x 15,5 mm bars or Ø27 mm cable</b>	
1	4 121 12	400/5	10
1	4 121 14	600/5	12
		<b>For 40,5 x 12,5 and 32,5 x 15,5 mm bars or Ø26 mm cable</b>	
1	4 121 16	250/5	3
1	4 121 17	400/5	6
1	4 121 19	700/5	8
		<b>For 40,5 x 10,5, 32,5 x 20,5 and 25,5 x 25,5 mm bars or Ø32 mm cable</b>	
1	4 121 23	250/5	3
1	4 121 24	300/5	5
1	4 121 25	400/5	8
1	4 121 26	600/5	12
		<b>For 50,5 x 12,5 and 40,5 x 20,5 mm bars or Ø40 mm cable</b>	
1	4 121 31	700/5	8
1	4 121 32	800/5	8
1	4 121 33	1000/5	10
		<b>For 65 x 32 mm bar</b>	
1	4 121 36	600/5	8
1	4 121 38	800/5	12
1	4 121 39	1000/5	15
		<b>For 84 x 34 mm bar</b>	
1	4 121 42	1250/5	12
		<b>For 127 x 38 mm bar</b>	
1	4 121 46	1600/5	10
1	4 121 47	2000/5	15
1	4 121 49	3200/5	25
		<b>For 127 x 54 mm bar</b>	
1	4 121 50	1600/5	20
1	4 121 51	2000/5	25
1	4 121 52	2500/5	30
1	4 121 53	3200/5	30
1	4 121 54	4000/5	30

Pack	Cat.Nos	<b>Three-phase solid core current transformers</b>	
		Used with ammeters, electricity meters or multi-function measuring units Current at the secondary: 5 A For fixing directly on bars Secondary connected by terminals or lugs Precision class: 1 %	
		<b>For three 20,5 x 5,5 mm bars</b>	
1	4 121 57	Transformation ratio 250/5	Output (VA) 3
		<b>For three 30,5 x 5,5 mm bars</b>	
1	4 121 58	400/5	4
		<b>Single-phase split-core current transformers</b>	
		Used with ammeters, electricity meters or multi-function measuring units Current at the secondary: 5 A For fixing directly on bars Secondary connected by terminals or lugs Precision class: 0,5 %	
		<b>For 50 x 80 mm bar</b>	
		Transformation ratio	Output (VA)
1	4 121 62	400/5	1,5
1	4 121 63	750/5	3
		<b>For 80 x 120 mm bar</b>	
1	4 121 64	1000/5	5
1	4 121 65	1500/5	8
		<b>For 80 x 160 mm bar</b>	
1	4 121 66	2000/5	15
1	4 121 67	2500/5	15
1	4 121 68	3000/5	20
1	4 121 69	4000/5	20
		<b>Viking 3 disconnecter block for measurement - 1 connection</b>	
		With its accessories, allows intervention (measurement, maintenance, etc) on a current, voltage and power measuring circuit by keeping the current transformer secondary circuit closed	
		Colour	Nominal cross section (mm <sup>2</sup> )
			Capacity
			Pitch (mm <sup>2</sup> )
			Rigid wire (mm <sup>2</sup> )
			Flexible wire (mm <sup>2</sup> )
25	0 371 92	Grey	4
			0.25 to 4
			0.25 to 4
			8