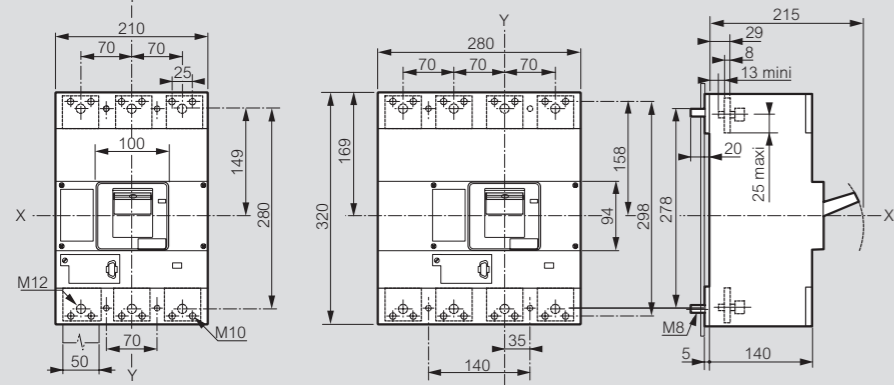


DPX³ 1600

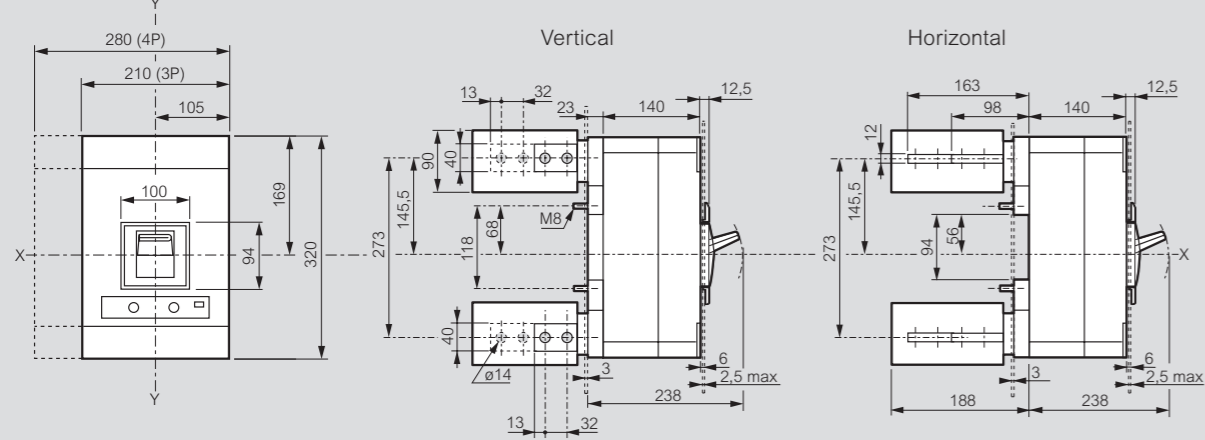
dimensions

Cotes d'encombrement

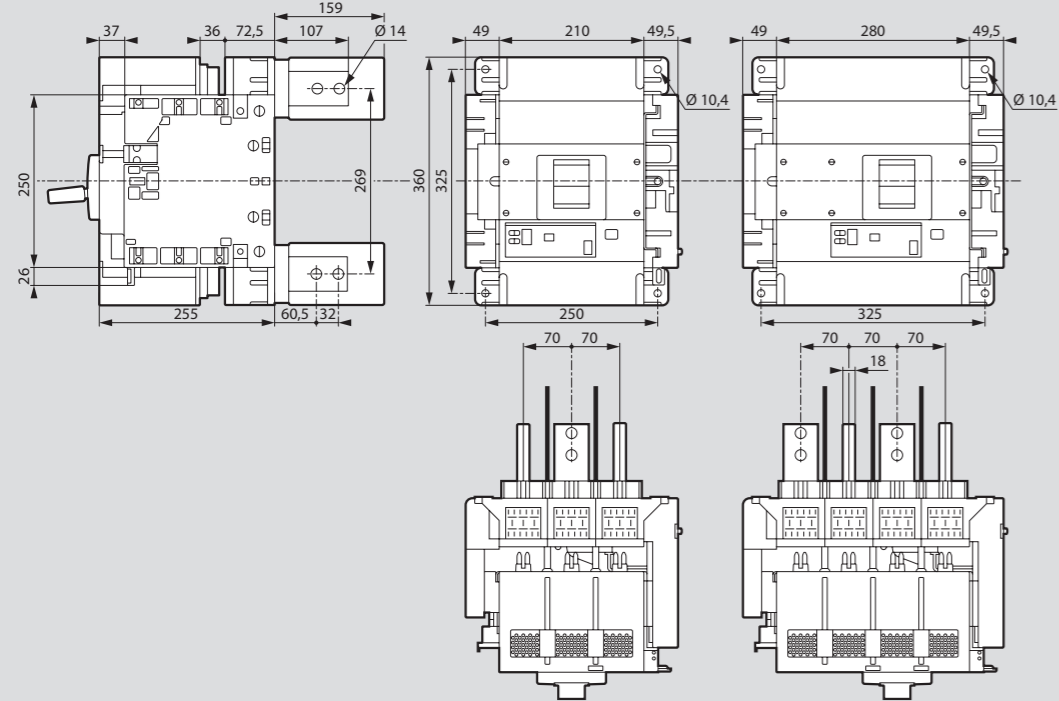
Version fixe prises avant



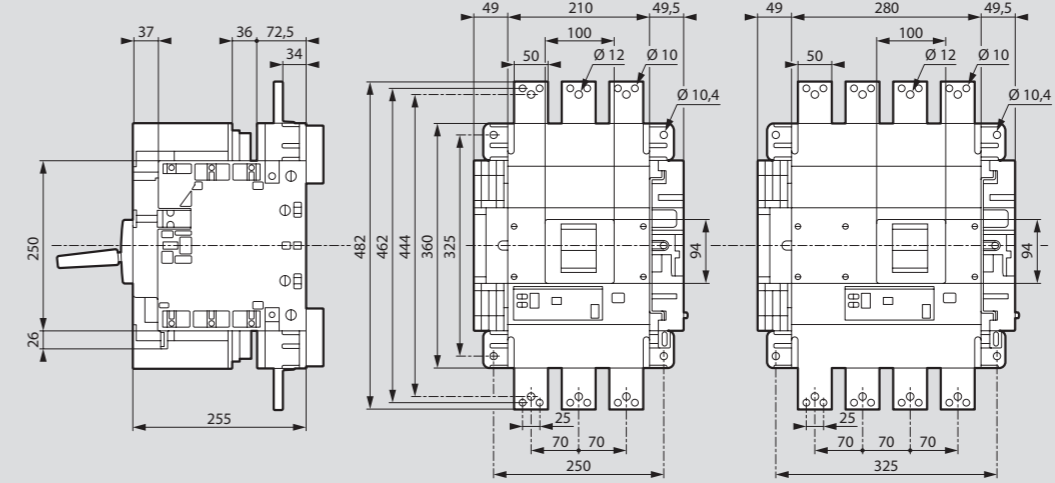
Version fixe prises arrière



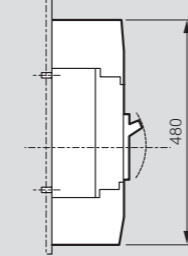
Version débrochable prises arrière



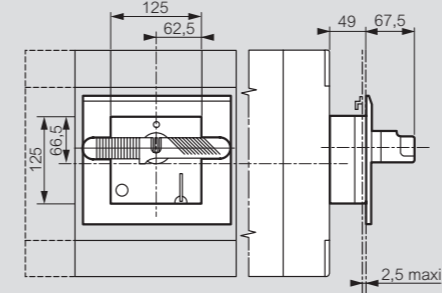
Version débrochable prises avant



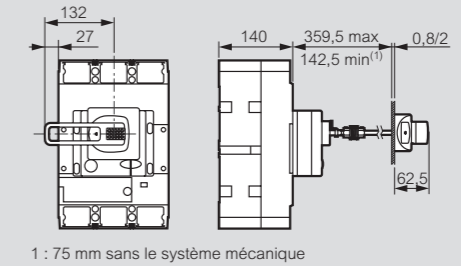
Cache-bornes



Commande rotative directe sur DPX³



Commande rotative déportée sur porte
Montage avec joint flexible



1 : 75 mm sans le système mécanique