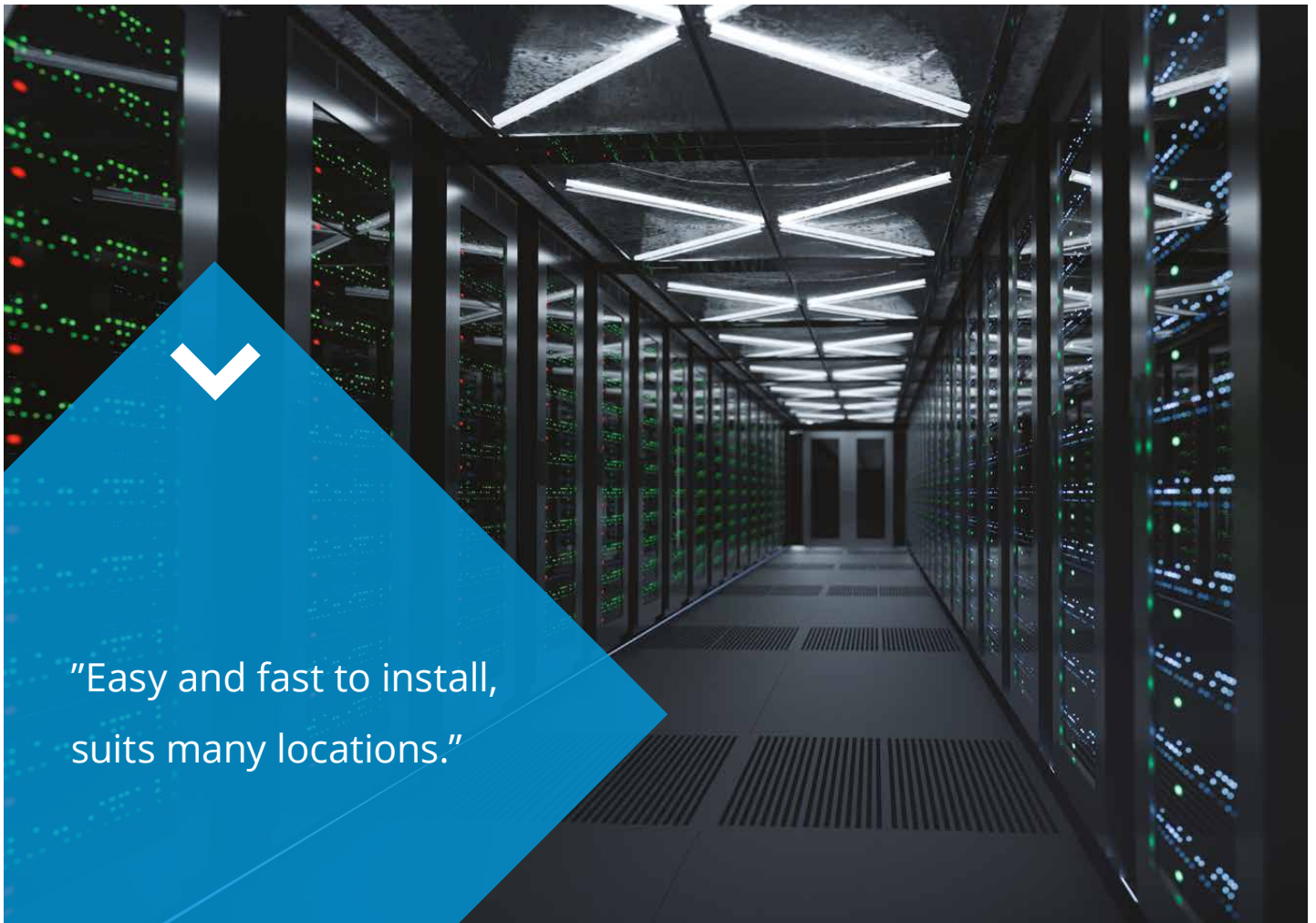


Line

LED



Line is versatile and stylish LED-luminaire which suits all around buildings, but feels like home in warehouses, corridors or server rooms. Affordable Line is fast and easy to install and it will ensure freedom of maintenance for years.



“Easy and fast to install,
suits many locations.”



Structure

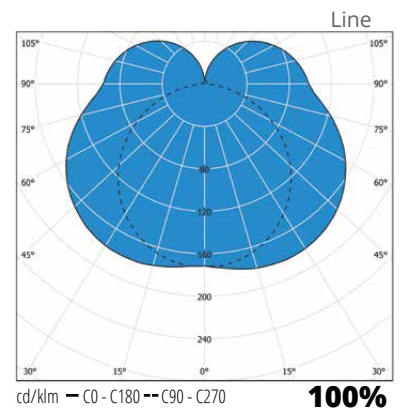
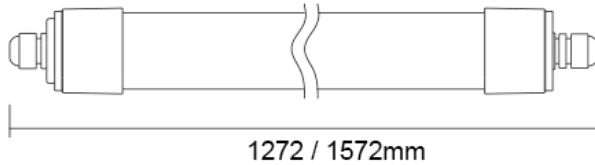
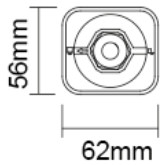
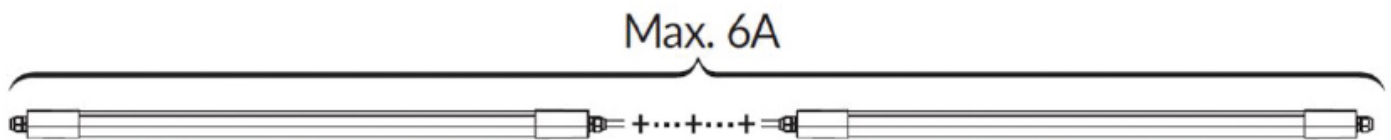
- Body and diffuser polycarbonate
- Led not changeable
- IP66, IK08
- 4000 K, Ra>80
- Ambient temperature -30 °C - +50 °C
- LED-module lifespan 50 000 h (L80), T_a=25 °C

Control

- On/off

Mounting

- To the ceiling or lighting suspension rail with fast brackets
- Through-wired, cable entries at the both ends of the luminaire



Luminaires per miniature circuit breaker	B10	B16	C10	C16
LI12.4300	11	18	18	30
LI15.6500	11	18	18	30

E number	Type	Product name	Output	Kg	Length	Width	Height	Luminous flux
Line								
43 611 81	LI12.4300	LI12.4300 IP66 36W 840 PC O	36W	1,0	1272	62	56	4300 lm
43 611 82	LI15.6500	LI15.6500 IP66 53W 840 PC O	53W	1,1	1572	62	56	6500 lm

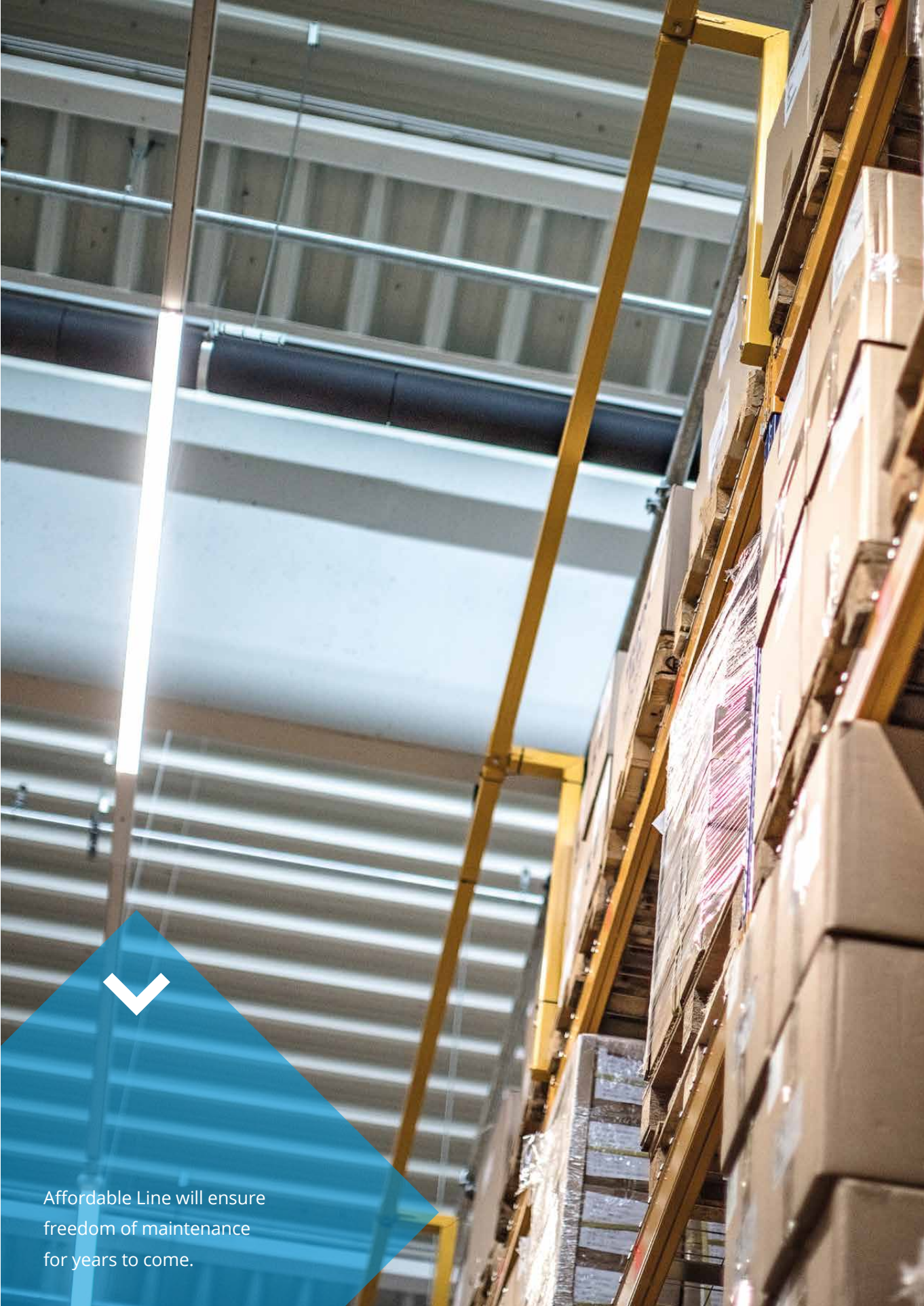


LINE AND FARMLINE - CHEMICAL RESISTANCE

Chemical Agents	Line	Farmline	Strainless Steel
	Polycarbonate	PMMA	
Acetic acid 10%	+	+	+
Acetone	-	-	+
Alcoholic beverages	+	0	+
Aluminium sulphate	+	+	0
Ammonia 5%	-	+	+
Aniline	-	-	+
Arsenic acid 20%	+	+	+
Benzene	-	-	0
Bencylic alcohol	-	-	0
Bromine	-	-	-
Calcium Chloride	+	+	0
Calcium nitrate	+	+	0
Carbon tetrachloride	-	-	0
Carbonic acid	-	-	+
Caustic potash 5%	-	+	0
Cement	+	+	0
Hydrochloric acid 1-5%	+	+	-
Chlorine liquids (vapours)	-	-	0
Chloroform	-	-	+
Chromic acid	0	0	0
Citric acid 20%	+	+	0
Copper sulphate	+	+	0
Diesel-naphta oil	0	+	+
Ethyl alcohol 30%	+	0	+
Ethyl chloride	-	-	+
Ethyl ether	-	-	0
Food oils and fats	-	+	+
Formic acid 10%	+	+	0
Glycerine	+	+	+

+	Resistant
0	Relatively resistant
-	Non-resistant

Chemical Agents	Line	Farmline	Strainless Steel
	Polycarbonate	PMMA	
Hexane	+	+	+
Iodine	-	+	-
Iron chloride	+	+	-
Isopropyl alcohol	0	0	0
Lubricating oil	+	+	+
Magnesium sulphate	+	+	+
Methanol	-	0	+
Mineral oils	+	+	+
Nitric acid 20%	0	+	+
Oxygen	+	+	+
Ozone	+	+	0
Perchloric acid 10%	+	+	-
Petrol	-	+	+
Phenol	-	-	0
Potassium bromide	+	+	0
Potassium nitrate	+	+	0
Potassium permanganate	+	+	0
Sea climate	+	+	0
Silicon oils	+	0	+
Soda bleach 15%	-	+	0
Sodium chloride	+	+	0
Sodium hydroxide 5%	-	+	0
Sodium sulphate	+	+	0
Sugar	+	+	+
Sulphur	+	+	0
Sulphuric acid 30%	+	+	-
Toluene	-	-	+
Trichloroethylene	-	-	0
Zinc sulphate	+	+	0



Affordable Line will ensure freedom of maintenance for years to come.

