

# Flip

LED

A product family of industrial LED lighting for demanding projects and use. The high-quality IP66 lights are optimal for parking garages, logistics centers and production facilities with dust, dirt, chemicals and irregular temperatures.



## DALI

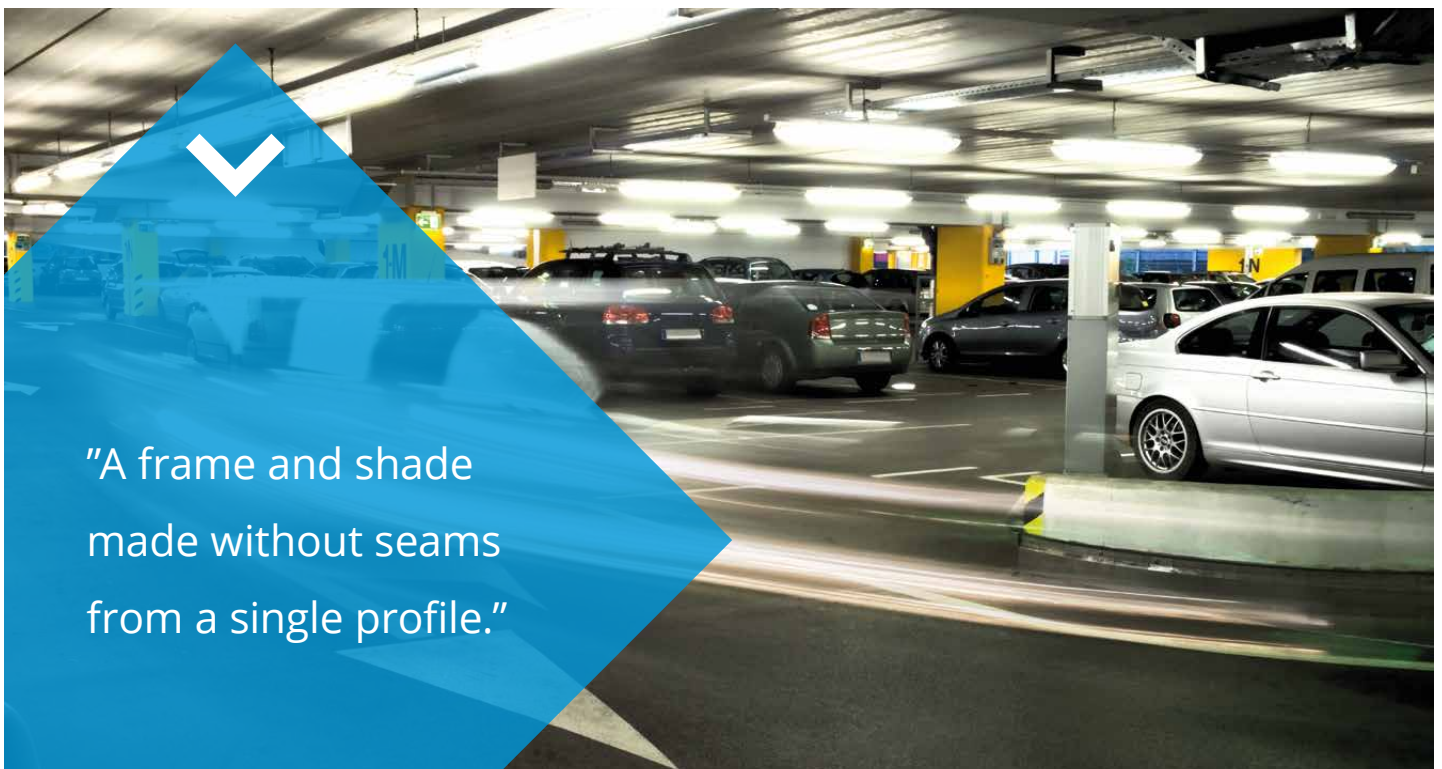
DALI drivers enable luminaires to be connected to DALI based control systems and Smart Buildings. Compared to a fixed output installation, the dimming and individual control capability provided by DALI enables considerable energy savings and control, depending on luminaire specifications.

## Helvar ActiveAhead

ActiveAhead is a self-learning, wireless networked and future proof control system. ActiveAhead luminaires listen and learn by themselves and from each other to make sure that there is always light on your way. Plug'n play, no programming or commissioning needed.

## Philips MasterConnect

The MasterConnect system includes luminaires and PIR sensors that communicate wirelessly with each other. The sensor can be integrated into the luminaire or separate. The simple and cost-effective system is very suitable for e.g. parking garages and office and school premises.



“A frame and shade made without seams from a single profile.”



FLIP 1RO



FLIP 3R



FLIP 1RO AA Low Bay sensor



FLIP 3R AA High Bay sensor

### Structure

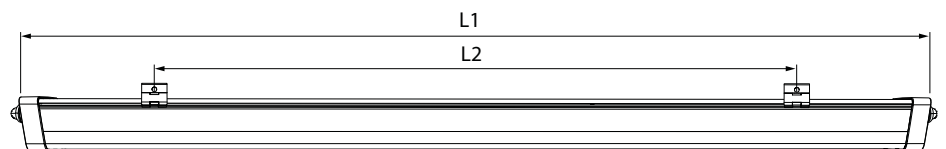
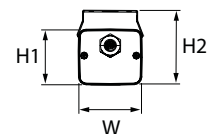
- › Body and end parts polycarbonate
- › Optics:
  - Opal, medium beam 60°, wide beam 80°, wide beam 90°
- › DALI and on/off, also wide range wireless solutions and sensors
- › Lumen output and length: see the table below
- › All luminaires are through wired, 5x2,5 mm<sup>2</sup>
- › Pushwire terminal 5x2,5 mm<sup>2</sup>
- › Ambient temperature range -20 °C to 30 °C
- › Industry versions -40 °C - ....
- › LED module lifespan T<sub>a</sub>=25 °C:
  - 100 000 h (L70)
  - 100 000 h (L80)
  - 71 000 h (L90)
- › LED driver lifetime T<sub>a</sub>=25 °C:
  - 100 000 h (max. 10 % failure rate)

### Mounting

- › Ceiling mounting with FLJK1 spring brackets included
- › FLJK1 with tamperproof bolt (see installation instruction) luminaire IK08
- › Suspension rail with FLJK2...6 spring brackets

### Made to order

- › With connection leads
- › Project-specific luminous flux packages
- › With EnstoNET connectors



Luminaire	L1	L2 min / max	W	H1	H2
FL12xxx	1253	800 / 1150	86	76	93
FL12xxx with control device	1323	900 / 1250	86	76	93
FL15xxx	1533	1100 / 1430	86	76	93
FL15xxx with control device	1603	1200 / 1530	86	76	93

E-number	Type	Product name	Power	Kg	Length	Control	Luminous flux	B16 max	C16 max
<b>Flip - opal diffuser</b>									
43 615 69	FL121R030	FL12 1RO IP66 3170LM 21W/840	21W	2,0	1253	on/off	3170 lm	38	64
43 615 70	FL121R030ED	FL12 1RO IP66 3170LM 21W/840 DALI	21W	2,0	1253	DALI	3170 lm	21	35
43 615 71	FL121R035	FL12 1RO IP66 3670LM 25W/840	25W	2,0	1253	on/off	3670 lm	38	64
43 615 72	FL121R035ED	FL12 1RO IP66 3670LM 25W/840 DALI	25W	2,0	1253	DALI	3670 lm	21	35
43 615 73	FL121R040	FL12 1RO IP66 4160LM 28W/840	28W	2,0	1253	on/off	4160 lm	38	64
43 615 74	FL121R040ED	FL12 1RO IP66 4160LM 28W/840 DALI	28W	2,0	1253	DALI	4160 lm	21	35
43 615 75	FL121R045	FL12 1RO IP66 4630LM 31W/840	31W	2,0	1253	on/off	4630 lm	38	64
43 615 76	FL121R045ED	FL12 1RO IP66 4630LM 31W/840 DALI	31W	2,0	1253	DALI	4630 lm	21	35
43 615 77	FL121R050	FL12 1RO IP66 5100LM 35W/840	35W	2,0	1253	on/off	5100 lm	28	38
43 615 78	FL121R050ED	FL12 1RO IP66 5100LM 35W/840 DALI	35W	2,0	1253	DALI	5100 lm	21	35

E-number	Type	Product name	Power	Kg	Length	Control	Luminous flux	B16 max	C16 max
<b>Flip - opal diffuser</b>									
43 615 79	FL121RO55	FL12 1RO IP66 5560LM 38W/840	38W	2,0	1253	on/off	5560 lm	28	38
43 615 80	FL121RO55ED	FL12 1RO IP66 5560LM 38W/840 DALI	38W	2,0	1253	DALI	5560 lm	21	35
43 615 81	FL121RO60	FL12 1RO IP66 6010LM 42W/840	42W	2,0	1253	on/off	6010 lm	28	38
43 615 82	FL121RO60ED	FL12 1RO IP66 6010LM 42W/840 DALI	42W	2,0	1253	DALI	6010 lm	21	35
43 615 83	FL121RO65	FL12 1RO IP66 6480LM 46W/840	46W	2,0	1253	on/off	6480 lm	28	38
43 615 84	FL121RO65ED	FL12 1RO IP66 6480LM 46W/840 DALI	46W	2,0	1253	DALI	6480 lm	21	35
43 615 85	FL121RO70	FL12 1RO IP66 6950LM 49W/840	49W	2,0	1253	on/off	6950 lm	28	38
43 615 86	FL121RO70ED	FL12 1RO IP66 6950LM 49W/840 DALI	49W	2,0	1253	DALI	6950 lm	21	35
43 615 87	FL121RO75	FL12 1RO IP66 7770LM 56W/840	56W	2,0	1253	on/off	7770 lm	28	38
43 615 88	FL121RO75ED	FL12 1RO IP66 7770LM 56W/840 DALI	56W	2,0	1253	DALI	7770 lm	21	35
43 615 89	FL121RO80	FL12 1RO IP66 8180LM 60W/840	60W	2,0	1253	on/off	8180 lm	28	38
43 615 90	FL121RO80ED	FL12 1RO IP66 8180LM 60W/840 DALI	60W	2,0	1253	DALI	8180 lm	20	34
43 615 91	FL121RO85	FL12 1RO IP66 8600LM 64W/840	64W	2,0	1253	on/off	8600 lm	28	38
43 615 92	FL121RO85ED	FL12 1RO IP66 8600LM 64W/840 DALI	64W	2,0	1253	DALI	8600 lm	20	34
43 615 93	FL121RO90	FL12 1RO IP66 9330LM 71W/840	71W	2,0	1253	on/off	9330 lm	19	32
43 615 94	FL121RO90ED	FL12 1RO IP66 9330LM 71W/840 DALI	71W	2,0	1253	DALI	9330 lm	20	34
43 615 95	FL151RO40	FL15 1RO IP66 3960LM 26W/840	26W	2,4	1533	on/off	3960 lm	38	64
43 615 96	FL151RO40ED	FL15 1RO IP66 3960LM 26W/840 DALI	26W	2,4	1533	DALI	3960 lm	21	35
43 615 97	FL151RO45	FL15 1RO IP66 4590LM 31W/840	31W	2,4	1533	on/off	4590 lm	38	64
43 615 98	FL151RO45ED	FL15 1RO IP66 4590LM 31W/840 DALI	31W	2,4	1533	DALI	4590 lm	21	35
43 615 99	FL151RO50	FL15 1RO IP66 5200LM 35W/840	35W	2,4	1533	on/off	5200 lm	28	38
43 641 86	FL151RO50ED	FL15 1RO IP66 5200LM 35W/840 DALI	35W	2,4	1533	DALI	5200 lm	21	35
43 641 87	FL151RO55	FL15 1RO IP66 5790LM 39W/840	39W	2,4	1533	on/off	5790 lm	28	38
43 641 88	FL151RO55ED	FL15 1RO IP66 5790LM 39W/840 DALI	39W	2,4	1533	DALI	5790 lm	21	35
43 641 89	FL151RO60	FL15 1RO IP66 6380LM 44W/840	44W	2,4	1533	on/off	6380 lm	28	38
43 641 90	FL151RO60ED	FL15 1RO IP66 6380LM 44W/840 DALI	44W	2,4	1533	DALI	6380 lm	21	35
43 641 91	FL151RO70	FL15 1RO IP66 6950LM 48W/840	48W	2,4	1533	on/off	6950 lm	28	38
43 641 92	FL151RO70ED	FL15 1RO IP66 6950LM 48W/840 DALI	48W	2,4	1533	DALI	6950 lm	21	35
43 641 93	FL151RO75	FL15 1RO IP66 7520LM 52W/840	52W	2,4	1533	on/off	7520 lm	28	38
43 641 94	FL151RO75ED	FL15 1RO IP66 7520LM 52W/840 DALI	52W	2,4	1533	DALI	7520 lm	21	35
43 641 95	FL151RO80	FL15 1RO IP66 8100LM 57W/840	57W	2,4	1533	on/off	8100 lm	28	38
43 641 96	FL151RO80ED	FL15 1RO IP66 8100LM 57W/840 DALI	57W	2,4	1533	DALI	8100 lm	21	35
43 641 97	FL151RO85	FL15 1RO IP66 8680LM 61W/840	61W	2,4	1533	on/off	8680 lm	28	38
43 641 98	FL151RO85ED	FL15 1RO IP66 8680LM 61W/840 DALI	61W	2,4	1533	DALI	8680 lm	20	34
43 641 99	FL151RO90	FL15 1RO IP66 9200LM 66W/840	66W	2,4	1533	on/off	9200 lm	19	32
43 901 00	FL151RO90ED	FL15 1RO IP66 9200LM 66W/840 DALI	66W	2,4	1533	DALI	9200 lm	20	34
43 901 27	FL151RO95	FL15 1RO IP66 9710LM 70W/840	70W	2,4	1533	on/off	9710 lm	19	32
43 901 28	FL151RO95ED	FL15 1RO IP66 9710LM 70W/840 DALI	70W	2,4	1533	DALI	9710 lm	20	34
43 901 30	FL151RO100	FL15 1RO IP66 10230LM 75W/840	75W	2,4	1533	on/off	10230 lm	19	32
43 901 31	FL151RO100ED	FL15 1RO IP66 10230LM 75W/840 DALI	75W	2,4	1533	DALI	10230 lm	20	34
43 901 33	FL151RO105	FL15 1RO IP66 10750LM 80W/840	80W	2,4	1533	on/off	10750 lm	19	32
43 901 34	FL151RO105ED	FL15 1RO IP66 10750LM 80W/840 DALI	80W	2,4	1533	DALI	10750 lm	20	34
43 901 36	FL151RO110	FL15 1RO IP66 11200LM 84W/840	84W	2,4	1533	on/off	11200 lm	19	32
43 901 37	FL151RO110ED	FL15 1RO IP66 11200LM 84W/840 DALI	84W	2,4	1533	DALI	11200 lm	20	33
43 901 39	FL151RO115	FL15 1RO IP66 11660LM 88W/840	88W	2,4	1533	on/off	11660 lm	19	31
43 901 40	FL151RO115ED	FL15 1RO IP66 11660LM 88W/840 DALI	88W	2,4	1533	DALI	11660 lm	20	31
<b>Flip - wide beam optics 90°</b>									
43 901 42	FL123RW90F40	FL12 3RW90F IP66 4140LM 26W/840	26W	2,0	1253	on/off	4140 lm	39	39
43 901 45	FL123RW90F40ED	FL12 3RW90F IP66 4140LM 26W/840 DALI	26W	2,0	1253	DALI	4140 lm	21	35
43 901 48	FL123RW90F50	FL12 3RW90F IP66 5100LM 32W/840	32W	2,0	1253	on/off	5100 lm	39	39
43 901 51	FL123RW90F50ED	FL12 3RW90F IP66 5100LM 32W/840 DALI	32W	2,0	1253	DALI	5100 lm	21	35
43 901 54	FL123RW90F60	FL12 3RW90F IP66 6030LM 38W/840	38W	2,0	1253	on/off	6030 lm	39	39
43 901 55	FL123RW90F60ED	FL12 3RW90F IP66 6030LM 38W/840 DALI	38W	2,0	1253	DALI	6030 lm	21	35

E-number	Type	Product name	Power	Kg	Length	Control	Luminous flux	B16 max	C16 max
<b>Flip - wide beam optics 90°</b>									
43 901 57	FL123RW90F70	FL12 3RW90F IP66 6920LM 45W/840	45W	2,0	1253	on/off	6920 lm	39	39
43 901 58	FL123RW90F70ED	FL12 3RW90F IP66 6920LM 45W/840 DALI	45W	2,0	1253	DALI	6920 lm	21	35
43 901 60	FL123RW90F75	FL12 3RW90F IP66 7820LM 52W/840	52W	2,0	1253	on/off	7820 lm	28	38
43 901 61	FL123RW90F75ED	FL12 3RW90F IP66 7820LM 52W/840 DALI	52W	2,0	1253	DALI	7820 lm	21	35
43 901 63	FL123RW90F85	FL12 3RW90F IP66 8660LM 58W/840	58W	2,0	1253	on/off	8660 lm	28	38
43 901 64	FL123RW90F85ED	FL12 3RW90F IP66 8660LM 58W/840 DALI	58W	2,0	1253	DALI	8660 lm	21	35
43 901 66	FL123RW90F95	FL12 3RW90F IP66 9430LM 65W/840	65W	2,0	1253	on/off	9430 lm	19	32
43 901 67	FL123RW90F95ED	FL12 3RW90F IP66 9430LM 65W/840 DALI	65W	2,0	1253	DALI	9430 lm	20	34
43 901 69	FL153RW90F50	FL15 3RW90F IP66 5180LM 32W/840	32W	2,4	1533	on/off	5180 lm	39	39
43 901 70	FL153RW90F50ED	FL15 3RW90F IP66 5180LM 32W/840 DALI	32W	2,4	1533	DALI	5180 lm	21	35
43 901 72	FL153RW90F60	FL15 3RW90F IP66 6380LM 40W/840	40W	2,4	1533	on/off	6380 lm	39	39
43 901 73	FL153RW90F60ED	FL15 3RW90F IP66 6380LM 40W/840 DALI	40W	2,4	1533	DALI	6380 lm	21	35
43 901 75	FL153RW90F75	FL15 3RW90F IP66 7530LM 48W/840	48W	2,4	1533	on/off	7530 lm	39	39
43 901 76	FL153RW90F75ED	FL15 3RW90F IP66 7530LM 48W/840 DALI	48W	2,4	1533	DALI	7530 lm	21	35
43 901 77	FL153RW90F85	FL15 3RW90F IP66 8660LM 56W/840	56W	2,4	1533	on/off	8660 lm	39	39
43 901 78	FL153RW90F85ED	FL15 3RW90F IP66 8660LM 56W/840 DALI	56W	2,4	1533	DALI	8660 lm	21	35
43 901 80	FL153RW90F95	FL15 3RW90F IP66 9770LM 65W/840	65W	2,4	1533	on/off	9770 lm	19	32
43 901 81	FL153RW90F95ED	FL15 3RW90F IP66 9770LM 65W/840 DALI	65W	2,4	1533	DALI	9770 lm	20	34
43 901 83	FL153RW90F105	FL15 3RW90F IP66 10820LM 73W/840	73W	2,4	1533	on/off	10820 lm	19	32
43 901 84	FL153RW90F105ED	FL15 3RW90F IP66 10820LM 73W/840 DALI	73W	2,4	1533	DALI	10820 lm	20	34
43 901 86	FL153RW90F115	FL15 3RW90F IP66 11780LM 81W/840	81W	2,4	1533	on/off	11780 lm	19	32
43 901 87	FL153RW90F115ED	FL15 3RW90F IP66 11780LM 81W/840 DALI	81W	2,4	1533	DALI	11780 lm	20	34
<b>Flip - wide beam optics 80°</b>									
43 901 89	FL123RW80C40	FL12 3RW80C IP66 4290LM 26W/840	26W	2,0	1253	on/off	4290 lm	39	39
43 901 90	FL123RW80C40ED	FL12 3RW80C IP66 4290LM 26W/840 DALI	26W	2,0	1253	DALI	4290 lm	21	35
43 901 92	FL123RW80C50	FL12 3RW80C IP66 5290LM 32W/840	32W	2,0	1253	on/off	5290 lm	39	39
43 901 93	FL123RW80C50ED	FL12 3RW80C IP66 5290LM 32W/840 DALI	32W	2,0	1253	DALI	5290 lm	21	35
43 901 95	FL123RW80C60	FL12 3RW80C IP66 6260LM 38W/840	38W	2,0	1253	on/off	6260 lm	39	39
43 901 97	FL123RW80C60ED	FL12 3RW80C IP66 6260LM 38W/840 DALI	38W	2,0	1253	DALI	6260 lm	21	35
43 901 98	FL123RW80C70	FL12 3RW80C IP66 7180LM 45W/840	45W	2,0	1253	on/off	7180 lm	39	39
43 903 00	FL123RW80C70ED	FL12 3RW80C IP66 7180LM 45W/840 DALI	45W	2,0	1253	DALI	7180 lm	21	35
43 903 01	FL123RW80C75	FL12 3RW80C IP66 8110LM 52W/840	52W	2,0	1253	on/off	8110 lm	28	38
43 903 05	FL123RW80C75ED	FL12 3RW80C IP66 8110LM 52W/840 DALI	52W	2,0	1253	DALI	8110 lm	21	35
43 903 09	FL123RW80C85	FL12 3RW80C IP66 8980LM 58W/840	58W	2,0	1253	on/off	8980 lm	28	38
43 903 10	FL123RW80C85ED	FL12 3RW80C IP66 8980LM 58W/840 DALI	58W	2,0	1253	DALI	8980 lm	21	35
43 903 11	FL123RW80C95	FL12 3RW80C IP66 9780LM 65W/840	65W	2,0	1253	on/off	9780 lm	19	32
43 903 15	FL123RW80C95ED	FL12 3RW80C IP66 9780LM 65W/840 DALI	65W	2,0	1253	DALI	9780 lm	20	34
43 903 20	FL153RW80C50	FL15 3RW80C IP66 5370LM 32W/840	32W	2,4	1533	on/off	5370 lm	39	39
43 903 21	FL153RW80C50ED	FL15 3RW80C IP66 5370LM 32W/840 DALI	32W	2,4	1533	DALI	5370 lm	21	35
43 903 25	FL153RW80C60	FL15 3RW80C IP66 6620LM 40W/840	40W	2,4	1533	on/off	6620 lm	39	39
43 903 29	FL153RW80C60ED	FL15 3RW80C IP66 6620LM 40W/840 DALI	40W	2,4	1533	DALI	6620 lm	21	35
43 903 30	FL153RW80C75	FL15 3RW80C IP66 7810LM 48W/840	48W	2,4	1533	on/off	7810 lm	39	39
43 903 31	FL153RW80C75ED	FL15 3RW80C IP66 7810LM 48W/840 DALI	48W	2,4	1533	DALI	7810 lm	21	35
43 903 33	FL153RW80C85	FL15 3RW80C IP66 8980LM 56W/840	56W	2,4	1533	on/off	8980 lm	39	39
43 903 34	FL153RW80C85ED	FL15 3RW80C IP66 8980LM 56W/840 DALI	56W	2,4	1533	DALI	8980 lm	21	35
43 903 36	FL153RW80C95	FL15 3RW80C IP66 10130LM 65W/840	65W	2,4	1533	on/off	10130 lm	19	32
43 903 38	FL153RW80C95ED	FL15 3RW80C IP66 10130LM 65W/840 DALI	65W	2,4	1533	DALI	10130 lm	20	34
43 903 40	FL153RW80C105	FL15 3RW80C IP66 11220LM 73W/840	73W	2,4	1533	on/off	11220 lm	19	32
43 903 41	FL153RW80C105ED	FL15 3RW80C IP66 11220LM 73W/840 DALI	73W	2,4	1533	DALI	11220 lm	20	34
43 903 42	FL153RW80C115	FL15 3RW80C IP66 12220LM 81W/840	81W	2,4	1533	on/off	12220 lm	19	32
43 903 43	FL153RW80C115ED	FL15 3RW80C IP66 12220LM 81W/840 DALI	81W	2,4	1533	DALI	12220 lm	20	34



E-number	Type	Product name	Power	Kg	Length	Control	Luminous flux	B16 max	C16 max
<b>Flip - medium beam optics 60°</b>									
43 903 44	FL123RM60F40	FL12 3RM60F IP66 4190LM 26W/840	26W	2,0	1253	on/off	4190 lm	39	39
43 903 45	FL123RM60F40ED	FL12 3RM60F IP66 4190LM 26W/840 DA	26W	2,0	1253	DALI	4190 lm	21	35
43 903 46	FL123RM60F50	FL12 3RM60F IP66 5160LM 32W/840	32W	2,0	1253	on/off	5160 lm	39	39
43 903 47	FL123RM60F50ED	FL12 3RM60F IP66 5160LM 32W/840 DA	32W	2,0	1253	DALI	5160 lm	21	35
43 903 48	FL123RM60F60	FL12 3RM60F IP66 6100LM 38W/840	38W	2,0	1253	on/off	6100 lm	39	39
43 903 49	FL123RM60F60ED	FL12 3RM60F IP66 6100LM 38W/840 DA	38W	2,0	1253	DALI	6100 lm	21	35
43 903 50	FL123RM60F70	FL12 3RM60F IP66 7000LM 45W/840	45W	2,0	1253	on/off	7000 lm	39	39
43 903 51	FL123RM60F70ED	FL12 3RM60F IP66 7000LM 45W/840 DA	45W	2,0	1253	DALI	7000 lm	21	35
43 903 52	FL123RM60F75	FL12 3RM60F IP66 7910LM 52W/840	52W	2,0	1253	on/off	7910 lm	28	38
43 903 53	FL123RM60F75ED	FL12 3RM60F IP66 7910LM 52W/840 DA	52W	2,0	1253	DALI	7910 lm	21	35
43 903 54	FL123RM60F85	FL12 3RM60F IP66 8760LM 58W/840	58W	2,0	1253	on/off	8760 lm	28	38
43 903 55	FL123RM60F85ED	FL12 3RM60F IP66 8760LM 58W/840 DA	58W	2,0	1253	DALI	8760 lm	21	35
43 903 56	FL123RM60F95	FL12 3RM60F IP66 9540LM 65W/840	65W	2,0	1253	on/off	9540 lm	19	32
43 903 57	FL123RM60F95ED	FL12 3RM60F IP66 9540LM 65W/840 DA	65W	2,0	1253	DALI	9540 lm	20	34
43 903 58	FL153RM60F50	FL15 3RM60F IP66 5240LM 32W/840	32W	2,4	1533	on/off	5240 lm	39	39
43 903 59	FL153RM60F50ED	FL15 3RM60F IP66 5240LM 32W/840 DA	32W	2,4	1533	DALI	5240 lm	21	35
43 903 60	FL153RM60F60	FL15 3RM60F IP66 6450LM 40W/840	40W	2,4	1533	on/off	6450 lm	39	39
43 903 61	FL153RM60F60ED	FL15 3RM60F IP66 6450LM 40W/840 DA	40W	2,4	1533	DALI	6450 lm	21	35
43 903 62	FL153RM60F75	FL15 3RM60F IP66 7620LM 48W/840	48W	2,4	1533	on/off	7620 lm	39	39
43 903 63	FL153RM60F75ED	FL15 3RM60F IP66 7620LM 48W/840 DA	48W	2,4	1533	DALI	7620 lm	21	35
43 903 64	FL153RM60F85	FL15 3RM60F IP66 8760LM 56W/840	56W	2,4	1533	on/off	8760 lm	39	39
43 903 65	FL153RM60F85ED	FL15 3RM60F IP66 8760LM 56W/840 DA	56W	2,4	1533	DALI	8760 lm	21	35
43 903 66	FL153RM60F95	FL15 3RM60F IP66 9880LM 65W/840	65W	2,4	1533	on/off	9880 lm	19	32
43 903 67	FL153RM60F95ED	FL15 3RM60F IP66 9880LM 65W/840 DA	65W	2,4	1533	DALI	9880 lm	20	34
43 903 68	FL153RM60F105	FL15 3RM60F IP66 10950LM 73W/840	73W	2,4	1533	on/off	10950 lm	19	32
43 903 69	FL153RM60F105ED	FL15 3RM60F IP66 10950LM 73W/840 DA	73W	2,4	1533	DALI	10950 lm	20	34
43 903 70	FL153RM60F115	FL15 3RM60F IP66 11920LM 81W/840	81W	2,4	1533	on/off	11920 lm	19	32
43 903 71	FL153RM60F115ED	FL15 3RM60F IP66 11920LM 81W/840 DA	81W	2,4	1533	DALI	11920 lm	20	34
<b>Flip - opal diffuser, radar</b>									
43 903 72	FL121RO40R	FL12 1RO IP66 4160LM 28W/840 Radar	28W	2,0	1323	radar on/off	4160 lm	38	64
43 903 73	FL121RO50R	FL12 1RO IP66 5100LM 35W/840 Radar	35W	2,0	1323	radar on/off	5100 lm	28	38
43 903 74	FL121RO60R	FL12 1RO IP66 6010LM 42W/840 Radar	42W	2,0	1323	radar on/off	6010 lm	28	38
43 903 75	FL121RO70R	FL12 1RO IP66 6950LM 49W/840 Radar	49W	2,0	1323	radar on/off	6950 lm	28	38
43 903 76	FL151RO50R	FL15 1RO IP66 5200LM 35W/840 Radar	35W	2,4	1603	radar on/off	5200 lm	28	38
43 903 77	FL151RO60R	FL15 1RO IP66 6380LM 44W/840 Radar	44W	2,4	1603	radar on/off	6380 lm	28	38
43 903 78	FL151RO75R	FL15 1RO IP66 7520LM 52W/840 Radar	52W	2,4	1603	radar on/off	7520 lm	28	38
43 903 79	FL151RO85R	FL15 1RO IP66 8680LM 61W/840 Radar	61W	2,4	1603	radar on/off	8680 lm	28	38
<b>Flip - opal diffuser, stepDIM</b>									
43 903 80	FL121RO40SD	FL12 1RO IP66 4160LM 28W/840 SD	28W	2,0	1323	stepDIM	4160 lm	43	43
43 903 81	FL121RO50SD	FL12 1RO IP66 5100LM 35W/840 SD	35W	2,0	1323	stepDIM	5100 lm	43	43
43 903 82	FL121RO60SD	FL12 1RO IP66 6010LM 42W/840 SD	42W	2,0	1323	stepDIM	6010 lm	43	43
43 903 83	FL121RO70SD	FL12 1RO IP66 6950LM 49W/840 SD	49W	2,0	1323	stepDIM	6950 lm	43	43
43 903 84	FL151RO50SD	FL15 1RO IP66 5200LM 35W/840 SD	35W	2,4	1603	stepDIM	5200 lm	34	34
43 903 85	FL151RO60SD	FL15 1RO IP66 6380LM 44W/840 SD	44W	2,4	1603	stepDIM	6380 lm	34	34
43 903 86	FL151RO75SD	FL15 1RO IP66 7520LM 52W/840 SD	52W	2,4	1603	stepDIM	7520 lm	34	34
43 903 87	FL151RO85SD	FL15 1RO IP66 8680LM 61W/840 SD	61W	2,4	1603	stepDIM	8680 lm	34	34
<b>Flip - opal diffuser, MasterConnect</b>									
43 903 88	FL121RO40MC	FL12 1RO IP66 4160LM 28W/840 MC	28W	2,0	1253	MasterConnect	4160 lm	21	35
43 903 89	FL121RO50MC	FL12 1RO IP66 5100LM 35W/840 MC	35W	2,0	1253	MasterConnect	5100 lm	21	35
43 903 90	FL121RO60MC	FL12 1RO IP66 6010LM 42W/840 MC	42W	2,0	1253	MasterConnect	6010 lm	21	35
43 903 91	FL121RO70MC	FL12 1RO IP66 6950LM 49W/840 MC	49W	2,0	1253	MasterConnect	6950 lm	21	35
43 903 92	FL151RO50MC	FL15 1RO IP66 5200LM 35W/840 MC	35W	2,4	1533	MasterConnect	5200 lm	21	35
43 903 93	FL151RO60MC	FL15 1RO IP66 6380LM 44W/840 MC	44W	2,4	1533	MasterConnect	6380 lm	21	35
43 903 94	FL151RO75MC	FL15 1RO IP66 7520LM 52W/840 MC	52W	2,4	1533	MasterConnect	7520 lm	21	35
43 903 95	FL151RO85MC	FL15 1RO IP66 8680LM 61W/840 MC	61W	2,4	1533	MasterConnect	8680 lm	21	35

E-number	Type	Product name	Power	Kg	Length	Control	Luminous flux	B16 max	C16 max
<b>Flip - opal diffuser, Active Ahead gen2, Low Bay, PIR</b>									
43 903 96	FL121R040A2L	FL12 1RO IP65 4160LM 28W/840 AA PIR	28W	2,0	1323	Active Ahead G2, PIR	4160 lm	21	35
43 903 97	FL121R050A2L	FL12 1RO IP65 5100LM 35W/840 AA PIR	35W	2,0	1323	Active Ahead G2, PIR	5100 lm	21	35
43 903 98	FL121R060A2L	FL12 1RO IP65 6010LM 42W/840 AA PIR	42W	2,0	1323	Active Ahead G2, PIR	6010 lm	21	35
43 903 99	FL121R070A2L	FL12 1RO IP65 6950LM 49W/840 AA PIR	49W	2,0	1323	Active Ahead G2, PIR	6950 lm	21	35
43 908 00	FL151R050A2L	FL15 1RO IP65 5200LM 35W/840 AA PIR	35W	2,4	1603	Active Ahead G2, PIR	5200 lm	21	35
43 908 01	FL151R060A2L	FL15 1RO IP65 6380LM 44W/840 AA PIR	44W	2,4	1603	Active Ahead G2, PIR	6380 lm	21	35
43 908 02	FL151R075A2L	FL15 1RO IP65 7520LM 52W/840 AA PIR	52W	2,4	1603	Active Ahead G2, PIR	7520 lm	21	35
43 908 03	FL151R085A2L	FL15 1RO IP65 8680LM 61W/840 AA PIR	61W	2,4	1603	Active Ahead G2, PIR	8680 lm	21	35
<b>Flip - opal diffuser, industrial -40 °C - ....</b>									
43 908 04	FL121R030-I	FL12 1RO IP66 3170LM 21W/840 IND	21W	2,0	1253	on/off	3170 lm	32	51
43 908 05	FL121R030ED-I	FL12 1RO IP66 3170LM 21W/840 DALI IND	21W	2,0	1253	DALI	3170 lm	55	90
43 908 06	FL121R040-I	FL12 1RO IP66 4160LM 28W/840 IND	28W	2,0	1253	on/off	4160 lm	32	51
43 908 07	FL121R040ED-I	FL12 1RO IP66 4160LM 28W/840 DALI IND	28W	2,0	1253	DALI	4160 lm	55	90
43 908 08	FL121R050-I	FL12 1RO IP66 5100LM 35W/840 IND	35W	2,0	1253	on/off	5100 lm	32	51
43 908 09	FL121R050ED-I	FL12 1RO IP66 5100LM 35W/840 DALI IND	35W	2,0	1253	DALI	5100 lm	30	50
43 908 10	FL121R060-I	FL12 1RO IP66 6010LM 42W/840 IND	42W	2,0	1253	on/off	6010 lm	32	51
43 908 11	FL121R060ED-I	FL12 1RO IP66 6010LM 42W/840 DALI IND	42W	2,0	1253	DALI	6010 lm	30	50
43 908 12	FL121R070-I	FL12 1RO IP66 6950LM 49W/840 IND	49W	2,0	1253	on/off	6950 lm	32	51
43 908 13	FL121R070ED-I	FL12 1RO IP66 6950LM 49W/840 DALI IND	49W	2,0	1253	DALI	6950 lm	28	41
43 908 14	FL151R040-I	FL15 1RO IP66 3960LM 26W/840 IND	26W	2,4	1533	on/off	3960 lm	32	51
43 908 15	FL151R040ED-I	FL15 1RO IP66 3960LM 26W/840 DALI IND	26W	2,4	1533	DALI	3960 lm	30	50
43 908 16	FL151R050-I	FL15 1RO IP66 5200LM 35W/840 IND	35W	2,4	1533	on/off	5200 lm	32	51
43 908 17	FL151R050ED-I	FL15 1RO IP66 5200LM 35W/840 DALI IND	35W	2,4	1533	DALI	5200 lm	30	50
43 908 18	FL151R060-I	FL15 1RO IP66 6380LM 44W/840 IND	44W	2,4	1533	on/off	6380 lm	32	51
43 908 19	FL151R060ED-I	FL15 1RO IP66 6380LM 44W/840 DALI IND	44W	2,4	1533	DALI	6380 lm	28	41
43 908 20	FL151R075-I	FL15 1RO IP66 7520LM 52W/840 IND	52W	2,4	1533	on/off	7520 lm	32	41
43 908 21	FL151R075ED-I	FL15 1RO IP66 7520LM 52W/840 DALI IND	52W	2,4	1533	DALI	7520 lm	28	41
43 908 22	FL151R085-I	FL15 1RO IP66 8680LM 61W/840 IND	61W	2,4	1533	on/off	8680 lm	32	41
43 908 23	FL151R085ED-I	FL15 1RO IP66 8680LM 61W/840 DALI IND	61W	2,4	1533	DALI	8680 lm	28	41
<b>Flip - wide beam optics 90°, industrial -40 °C - ....</b>									
43 908 24	FL153RHW90F130-I	FL15 3RW90F IP66 13370LM 90W/840 IND	90W	2,4	1533	on/off	13370 lm	16	27
43 908 25	FL153RHW90F130ED-I	FL15 3RW90F IP66 13370LM 90W/840 DALI IND	90W	2,4	1533	DALI	13370 lm	16	27
<b>Flip - spring and rail brackets</b>									
43 908 34	FLJK1	SPRING BRACKET PAIR		0,2					
43 908 35	FLJK2	RAIL BRACKET PAIR MEK70		0,2					
43 908 36	FLJK2V	RAIL BRACKET PAIR MEK70 WHITE		0,2					
43 908 37	FLJK3	RAIL BRACKET PAIR MEK110		0,2					
43 908 38	FLJK3V	RAIL BRACKET PAIR MEK110 WHITE		0,2					
43 908 39	FLJK4	RAIL BRACKET PAIR MP-311		0,2					
43 908 40	FLJK4V	RAIL BRACKET PAIR MP-311 WHITE		0,2					
43 908 41	FLJK5	RAIL BRACKET PAIR MP-321		0,2					
43 908 42	FLJK5V	RAIL BRACKET PAIR MP-321 WHITE		0,2					
43 908 43	FLJK6	RAIL BRACKET PAIR XYRV106M		0,2					
43 908 44	FLJK6V	RAIL BRACKET PAIR XYRV106M WH		0,2					



# Flip

## Code key

**F L 1 5 3 R W 9 0 F 6 0 E D** / **9 4 0 - I**

### Luminaire

- > **FL** Flip

### Length

- > **12** 1253 mm (4ft)
- > **15** 1533 mm (5ft)

### LED module

- > **1R** 1-Row
- > **3R** 3-Row
- > **3RH** 3-Row, High performance

### Optics

- > **O** Opal diffuser
- > **M60F** Medium beam 60°, frosted
- > **W80C** Wide beam 80°, clear
- > **W90F** Wide beam 90°, frosted

### Luminous flux

- > Check table from the next page

### Dimming / Control

- > Basic on/off
- > **ED** DALI
- > **R** Radar sensor with DIP-Switch, on/off
- > **SD** StepDIM, Radar sensor with DIP-Switch, single luminaire CorridorFunction
- > **MC** MasterConnect, Wireless Zigbee and Bluetooth
- > **A2** ActiveAhead gen2, no sensor, Wireless Bluetooth
- > **A2L** ActiveAhead gen2 Low Bay PIR sensor, Wireless Bluetooth
- > **A2H** ActiveAhead gen2 High Bay PIR sensor, Wireless Bluetooth

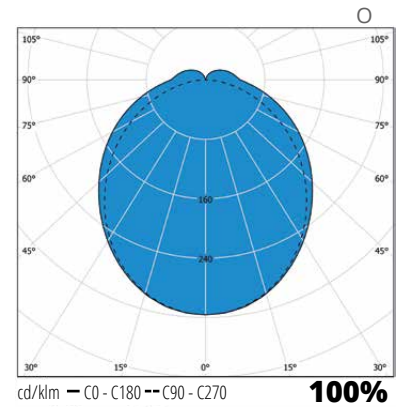
### CCT (CRI)

- > CRI 80 and 4 000K
- > **830** CRI 80 and 3 000K
- > **850** CRI 80 and 5 000K
- > **930** CRI 90 and 3 000K
- > **940** CRI 90 and 4 000K
- > **950** CRI 90 and 5 000K

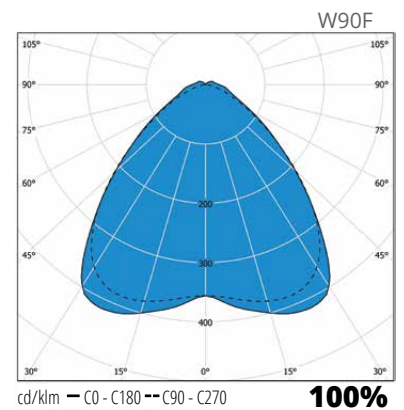
### Special

- > **I** Industrial model Ta -40°...

Luminous flux indicator	FL12			
	O	W90F	W80C	M60F
30	3170			
35	3670			
40	4160	4140	4290	4190
45	4630			
50	5100	5100	5290	5160
55	5560			
60	6010	6030	6260	6100
65	6480			
70	6950	6920	7180	7000
75	7770	7820	8110	7910
80	8180			
85	8600	8660	8980	8760
90	9330			
95		9430	9780	9540



Luminous flux indicator	FL15			
	O	W90F	W80C	M60F
40	3960			
45	4590			
50	5200	5180	5370	5240
55	5790			
60	6380	6380	6620	6450
65				
70	6950			
75	7520	7530	7810	7620
80	8100			
85	8680	8660	8980	8760
90	9200			
95	9710	9770	10130	9880
100	10230			
105	10750	10820	11220	10950
110	11200			
115	11660	11780	12220	11920
130		13370	13870	13530
140		14360	14900	14530
155		15540	16120	15720



Luminous flux indicator	FL18			
	O	W90F	W80C	M60F
160		16040	16640	16230
170		17230	17870	17430
185		18650	19350	18870

