

Alisa

LED

Alisa luminaire range fit for general and work point lighting and it is designed for wet premises. The shape of the luminaire bottom allows it's installation in 45 degrees angle as well as directly on the surface.



AL142-series

DualWhite

Ensto luminaires with DualWhite -solution are equipped with integrated option for light colour temperature switching. You can easily switch between 3000K and 4000K which saves your SKUs and gives you possibility to change colour temperature according to project, with one luminaire.



Dual
White

1 Luminaire,
2 Colour temperatures



“When water might be involved, Alisa is your choice, IP44 with socket outlets.”



AL140-series



AL141-series



AL14314

Structure

- › Body - White powder-coated aluminium
- › End caps - UV resistant polycarbonate
- › Diffuser - UV resistant opal acrylic plastic
- › Switch side can be changed by turning the luminaire 180 degrees (without separate connection)
- › Accessories:
 - AL140 luminaire without accessories
 - AL141 luminaire and switch with protective rubber cover
 - AL142 luminaire, with double socket outlet and switch with protective rubber cover, horizontal outlet holes
 - Alisa models with residual current braker (RCB) with onesocket outlet and in place of an other socket outlet the residual current braker
- › AL142 series (except models with RCB) includes a separate cover for the switch
- › LED-models DualWhite:
 - 3000K or 4000K selected from circuit board switch under diffuser
 - 7W - 560/610 lm
 - 9W - 670/750 lm
 - Ra > 80, power factor 0,92
 - Ambient temperature - 20 °C - + 30 °C
 - LED-module lifespan 30 000 h (L70), T_a=25 °C

Mounting

- › To the ceiling or in 45° angle to the corner.
- › Connection point next to the cable entry holes
- › 2 cable entry holes at the bottom of the luminaire
- › Equipped with cable mounting slot across the luminaire body
- › Blind cable entries in end caps
- › Constant voltage can be connected to luminaire's socket outlets
- › SK13 bracket for fixing the luminaire above the mirror cabinet

E number	Type	Product name	Base	Kg	A	D	E	F
AL140 LED DW without accessories								
41 033 94	AL14018LED/DW	AL14018LED/DW IP44 LED 9W/8DW	LED	1,1	628	423	480	103
AL141 LED DW with rubber coated switch								
41 033 95	AL14118LED/DW	AL14118LED/DW IP44 9W/8DW SW	LED	1,1	628	423	480	103
AL142 LED DW with double socket outlet and rubber coated switch								
41 033 97	AL14218LED/DW	AL14218LED/DW IP44 9W/8DW DSO	LED	1,4	814	365	480	231
AL142 LED DW with 1-socket outlet and rubber coated switch with residual current braker								
41 033 98	AL14229VLED/DW	AL14229VLED/DW IP44 7W/8DWSORC	LED	1,7	597	355	190	312
AL143 LED DW with 1-socket outlet								
41 034 00	AL143L600/DW	AL143L600/DW IP44 LED 7W/8DWSO	LED	1,5	600	280	400	148
Accessories								
41 030 02	SK13	SK13 MIRROR CABINET FIXTURES	Set consists of 2 fixing plate and 4 platescrews					

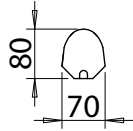
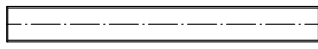
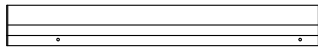
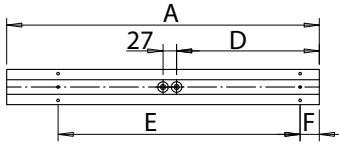




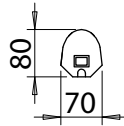
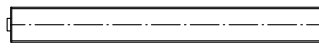
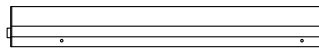
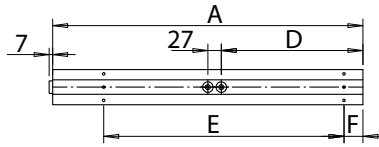
AL14229 with mirror cabinet fixing brackets



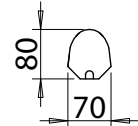
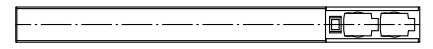
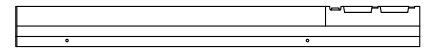
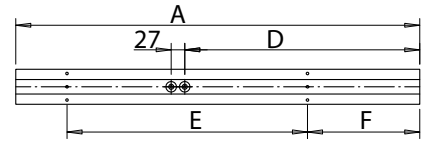
AL14229V



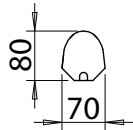
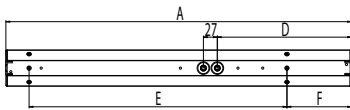
AL140-series



AL141-series



AL142-series



AL143-series



When lighting the bathroom with shower or if the water point is near, Alisa with IP44 classification is the easy choice.

