

# Monix Ramp

T5

Energy efficient T5 luminaire with self-supporting body specially designed for lighting in supermarkets and large open areas as well as for general lighting of industrial premises and warehouses. Monix range offers wide selection of optics and installation accessories.



## DALI

DALI drivers enable luminaires to be connected to DALI based control systems and Smart Buildings. Compared to a fixed output installation, the dimming and individual control capability provided by DALI enables considerable energy savings and control, depending on luminaire specifications.



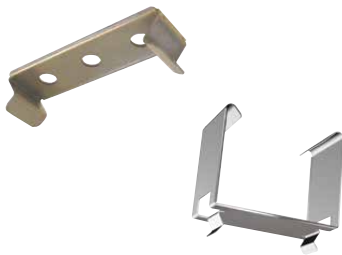
“Basic luminaire for warehouses and retail.”



Cover plate AMPL



End support AMRPK



Spring brackets AMJK1 and AMJK2

### Structure

- › Body and end caps white powder coated aluminium profile
- › End caps - UV-resistant ABS plastic
- › Wide beam optics - gloss anodised aluminium = A (3-6 m)
- › Medium beam optics - gloss anodised aluminium = AL (6-10 m)
- › Wide and medium beam optics achieved with the same reflector by changing the lamp holder position
- › Narrow beam optics for warehouses, gloss anodised aluminium = AV (over 10 m)
- › 2x2x49W, length 2980 mm
- › Other power options, for example:
  - AMR480..., 2x2x80W, length 2980 mm
  - AMR654..., 3x2x54W, length 3560 mm
  - AMR454..., 2x2x54W, length 2380 mm

### Mounting

- › Surface mounting directly to the ceiling or with spring bracket AMJK1
- › To the lighting suspension rail (MEK) 70 mm with (AMJK2/AMJK2V) and 110 mm with (AMJK3/AMJK3V)
- › Between the lighting suspension rails with steplessly adjustable end supports (AMRPK, AMRPK500 or AMRPK330)

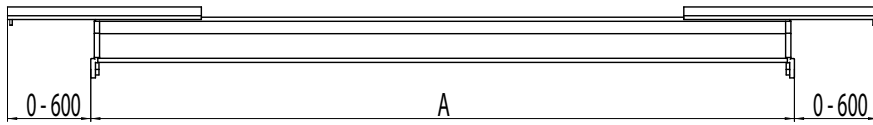
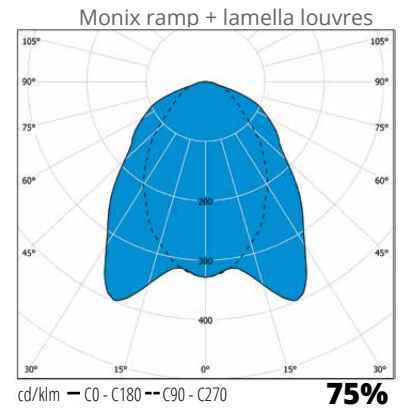
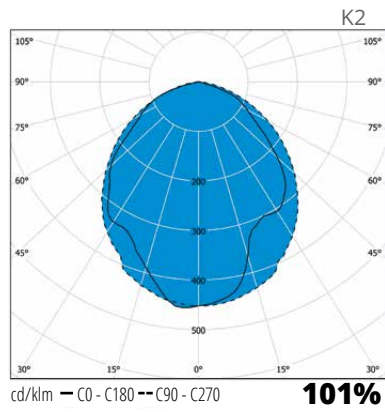
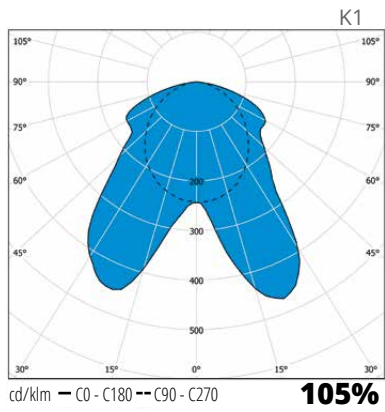
### Made to order

- › Dimmable models:
  - Switch-Control
  - 1-10V (ELD)
  - DALI (ED)
- › With connection lead
- › Wide beam (A) and medium beam (AL) models with white lamella louvres
  - HSAM35-35/49/80W
  - HSAM28-28/54W
  - With clear inside ribbed diffusers
- › With AMPL cover plate pair for covering tube holders (Wide and medium beam models)
- › With outside emergency light unit
- › With stand alone luminaires attached to long body, placed symmetrically in the middle of the luminaire body
- › With spring brackets for XYRV, OBO and Elwia MP lighting suspension rails

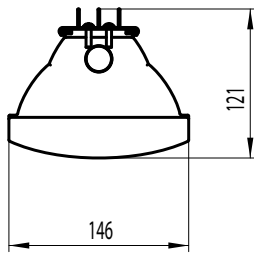
E number	Type	Product name	Base	Light distribution	Colour	Kg
<b>Monix ramp</b>						
43 641 74	AMR449A	AMR449A T5 2X2X49W RAMP	G5	K1	white	4,6
43 641 75	AMR449AL	AMR449AL T5 2X2X49W RAMP	G5	K2	white	4,6
<b>Mounting accessories</b>						
43 641 70	AMJK1	AMJK1 SPRING BRACKET PAIR	spring bracket pair		clear	
43 641 72	AMJK2	AMJK2 SPRING BRACKET PAIR	Spring bracket pair for suspension rail mounting 70 mm wide (MEK70)		clear	
42 653 82	AMJK2V	AMJK2V SPRING BRACKET PAIR WH	spring bracket pair for suspension rail mounting 70 mm wide (MEK70)		white	
42 653 05	AMJK3	AMJK3 SPRING BRACKET PAIR	spring bracket pair for suspension rail mounting 110 mm wide (MEK110)		clear	
43 600 83	AMJK3V	AMJK3V SPRING BRACKET PAIR WH	spring bracket pair for suspension rail mounting 110 mm wide (MEK110)		white	
43 641 76	AMRPK	AMRPK RAMP MOUNT.PAIR 1M	pair of end supports 2980-4180 mm*		white	1,2
42 653 80	AMRPK500	AMRPK500 RAMP MOUNT.PAIR 0,5M	pair of end supports 2980-3610 mm*		white	0,6
42 653 79	AMRPK330	AMRPK330 RAMP MOUNT.PAIR 0,3M	pair of end supports 2980-3390 mm*		white	0,4

\* = Total ramp length incl. end supports

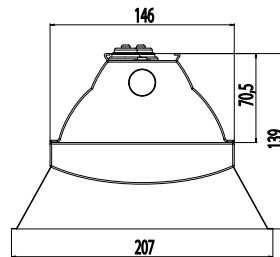




A = The length of the luminaire  
 AMRPK end support adjustment / one end  
 AMRPK 0-600 mm  
 AMRPK500 0-315 mm  
 AMRPK330 0-205 mm

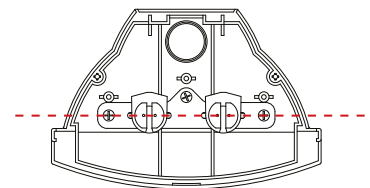


Monix Ramp A and AL

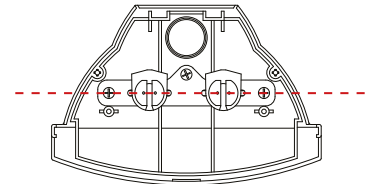


Monix Ramp AV

Monix tube holder positions



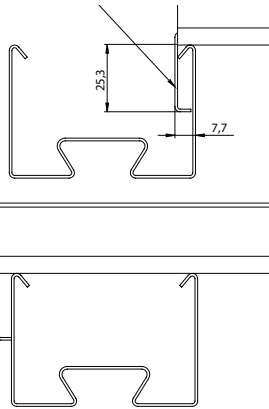
Wide beam optics (A), position 1



Medium (AL) and narrow (AV) beam optics, position 2

MONIX RAMP END SUPPORTS

End support with standard bracket

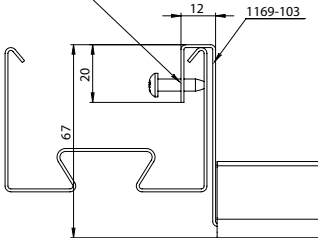


AMRPK end support with standard bracket

End support + bracket 2



Can be fastened by screw (Do not include to the delivery)

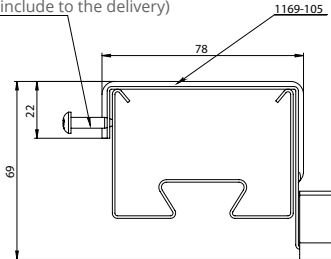


AMRPK end support with lower bracket. Can be fastened with screw or by pressing together (to be ordered separately).

End support + bracket 4

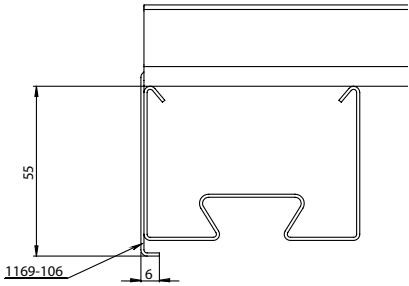


Can be fastened by screw (Do not include to the delivery)

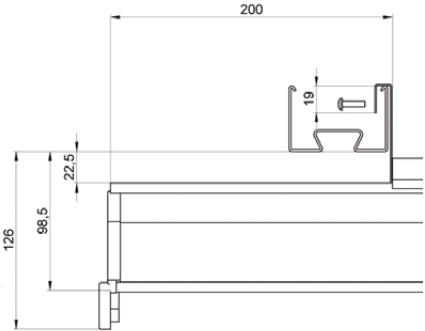


AMRPK end support with high bracket (to be ordered separately)

End support + bracket 5



AMRPK end support and lower bracket which can be fastened by screw or by pressing together must be ordered separately. With the lower bracket the ramp luminaires installed between the lighting suspension rails can be positioned on the same level as luminaires installed to the lighting suspension rail with AMJK2 spring brackets.



When the distance between the lighting suspension rails is shorter than the length of the luminaire (e.g. renovation project), the mounting of ramp can be done with lower bracket.

