

Monix IP23

T5

Monix IP23 is efficient and versatile luminaire serie for dry and humid premises. The multipurpose luminaire range fits excellent for general lighting of supermarkets, warehouses and various industrial applications.



Surface mounting

DALI

DALI drivers enable luminaires to be connected to DALI based control systems and Smart Buildings. Compared to a fixed output installation, the dimming and individual control capability provided by DALI enables considerable energy savings and control, depending on luminaire specifications.



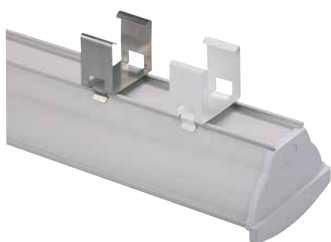
“Basic luminaire for warehouses and retail, IP23.”



Monix lamella louvre



AV reflector



AMJK2 and AMJK2V

Structure

- › Body - white painted aluminium profile
- › End caps - UV-resistant ABS plastic
- › Wide beam optics - gloss anodised aluminium = A (3-6 m)
- › Medium beam optics - gloss anodised aluminium = AL (6-10 m)
- › Wide and medium beam optics achieved with the same reflector by changing the lamp holder position
- › Narrow beam optics for warehouses, gloss anodised aluminium = AV (over 10 m)
- › -N in product code means individually packed

Mounting

- › Surface mounting directly to the ceiling or with AMJK1 spring brackets
- › Mounting to the lighting suspension rail 70 mm wide with (AMJK2/AMJK2V) and 110 mm wide with (AMJK3)
- › Wire suspension with (AMJK1 + RVLX01 suspension wire kit)
- › Recess mounting without additional parts, recess depth 70 mm
- › Connection point in the middle of the luminaire
- › Two 21 mm cable entry holes at the bottom of the luminaire
- › Blind cable entries (21 mm) at the both ends
- › 5x2,5 mm² for 3-phase through wiring

Made to order

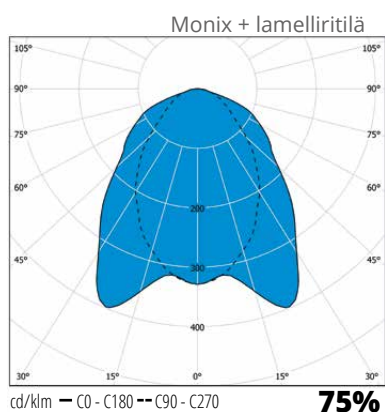
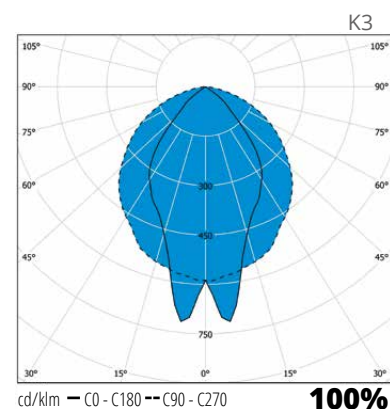
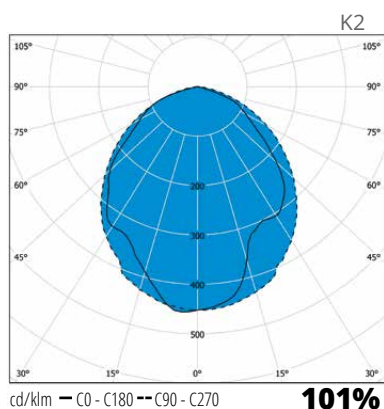
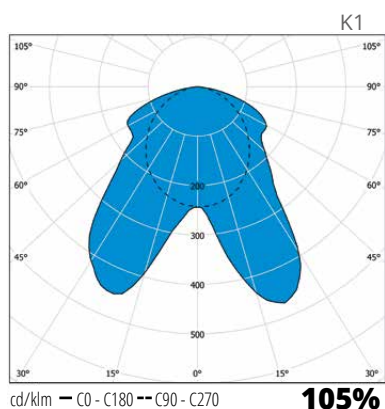
- › Dimmable models:
Switch-Control (ES)
1-10V (ELD)
DALI (ED)
- › Adding diffuser raises IP rating to IP44, 80W versions available only in IP23
- › Wide beam (A) and medium beam (AL) models with white lamella louvres
HSAM35-35/49/80W
HSAM28-28/54W
- › AMPL end cover plate pair for covering tube holders
- › With outside emergency light unit
- › With fasteners for lighting track
- › With fasteners for threaded rod
- › AM214A T5 2x14W and AM114A T5 1x14W
- › 1-tube models with medium (AL) and narrow beam (AV) light distribution
- › With spring brackets for XYRV, OBO and Elwia MP lighting suspension rails

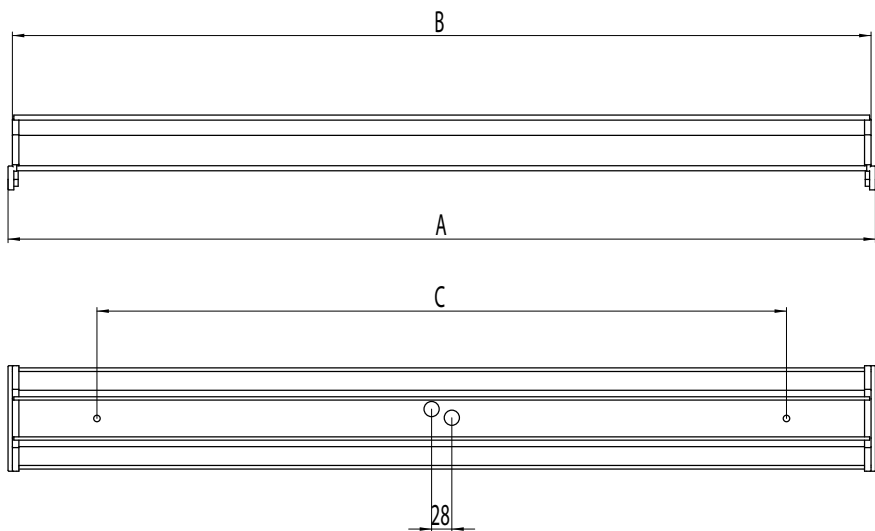
E number	Type	Product name	Base	Colour	Kg	Light distribution	A	B	C
T5 Wide beam optics (A)									
43 641 00	AM128A	AM128A T5 1X28W	G5	white	1,8	K*	1200	1188	984
43 641 01	AM135A	AM135A T5 1X35W	G5	white	2,3	K*	1500	1488	1284
43 641 02	AM149A	AM149A T5 1X49W	G5	white	2,3	K*	1500	1488	1284
43 641 03	AM154A	AM154A T5 1X54W	G5	white	1,8	K*	1200	1188	984
43 641 04	AM180A	AM180A T5 1X80W	G5	white	2,3	K*	1500	1488	1284
43 641 83	AM228A	AM228A T5 2X28W	G5	white	1,8	K*	1200	1188	984
43 641 05	AM228A-N	AM228A-N T5 2X28W	G5	white	1,8	K*	1200	1188	984
43 641 06	AM235A	AM235A T5 2X35W	G5	white	2,3	K*	1500	1488	1284
43 641 84	AM249A	AM249A T5 2X49W	G5	white	2,3	K1	1500	1488	1284
43 641 07	AM249A-N	AM249A-N T5 2X49W	G5	white	2,3	K1	1500	1488	1284
43 641 08	AM254A	AM254A T5 2X54W	G5	white	1,8	K*	1200	1188	984
43 615 25	AM280A	AM280A T5 2X80W	G5	white	2,3	K*	1500	1488	1284
T5 Medium beam optics (AL)									
43 641 14	AM228AL	AM228AL T5 2X28W	G5	white	1,8	K*	1200	1188	984
43 641 15	AM235AL	AM235AL T5 2X35W	G5	white	2,3	K*	1500	1488	1284
43 641 16	AM249AL	AM249AL T5 2X49W	G5	white	2,3	K2	1500	1488	1284
43 641 17	AM254AL	AM254AL T5 2X54W	G5	white	1,8	K*	1200	1188	984
43 615 16	AM280AL	AM280AL T5 2X80W	G5	white	2,3	K*	1500	1488	1284



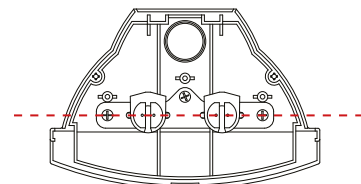
E number	Type	Product name	Base	Colour	Kg	Light distribution	A	B	C
T5 Narrow beam optics (AV)									
43 641 23	AM228AV	AM228AV T5 2X28W	G5	white	1,9	K*	1200	1188	984
43 641 24	AM235AV	AM235AV T5 2X35W	G5	white	2,4	K*	1500	1488	1284
43 641 25	AM249AV	AM249AV T5 2X49W	G5	white	2,4	K3	1500	1488	1284
43 641 26	AM254AV	AM254AV T5 2X54W	G5	white	1,9	K*	1200	1188	984
43 641 27	AM280AV	AM280AV T5 2X80W	G5	white	2,4	K*	1500	1488	1284
Diffusers									
43 641 77	KUAM14K	KUAM14K 14W C		clear		diffuser, Monix 14W			
43 641 78	KUAM28K	KUAM28K 28/54W C		clear		diffuser, Monix 28/54W			
43 641 79	KUAM49K	KUAM49K 35/49/80W C		clear		diffuser, Monix 35/49/80W			
43 641 80	KUAM14O	KUAM14O 14W O		opal		diffuser, Monix 14W			
43 641 81	KUAM28O	KUAM28O 28/54W O		opal		diffuser, Monix 28/54W			
43 641 82	KUAM49O	KUAM49O 35/49/80W O		opal		diffuser, Monix 35/49/80W			
Mounting accessories									
43 641 70	AMJK1	AMJK1 SPRING BRACKET PAIR				spring bracket pair			
43 641 72	AMJK2	AMJK2 SPRING BRACKET PAIR				spring bracket pair for suspension rail mounting 70 mm wide (MEK70) steel			
42 653 82	AMJK2V	AMJK2V SPRING BRACKET PAIR WH				spring bracket pair for suspension rail mounting 70 mm wide (MEK70) white			
42 653 05	AMJK3	AMJK3 SPRING BRACKET PAIR				spring bracket pair for suspension rail mounting 110 mm wide (MEK110) steel			
43 600 83	AMJK3V	AMJK3V SPRING BRACKET PAIR WH				spring bracket pair for suspension rail mounting 110 mm wide (MEK110) white			
43 641 73	AMPL	AMPL END COVER PLATE				end cover plate pair			
White lamella louvres									
43 600 46	HSAM1135	HSAM1135				lamella louvres Monix 35/49/80W			
43 600 32	HSAM1128	HSAM1128				lamella louvres Monix 28/54W			

K* Other light distribution curves upon request.

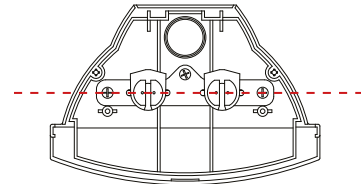




Monix tube holder positions

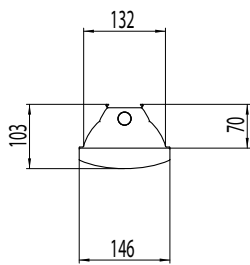


Wide beam optics (A), position 1

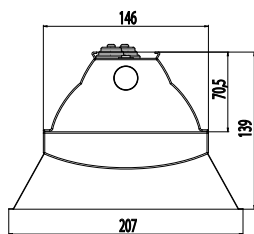


Medium (AL) and narrow (AV) beam optics, position 2

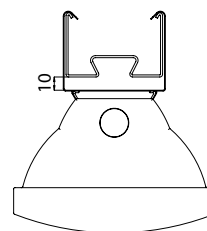
Recess depth 70mm



Monix A and AL



Monix AV



AMJK2 mounting



Pair of cover plates AMPL



Spring fastener AMJK1



Spring fastener AMJK2

