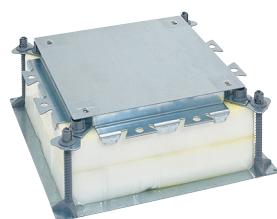


## Heavy duty in-screed floor box

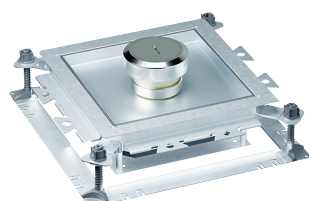
for concrete floors



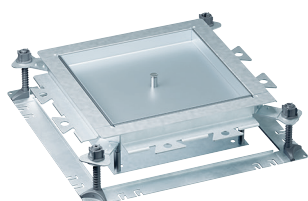
0 880 80



0 896 82



0 880 80 + 0 896 82 + 0 896 96 + 0 896 87



0 880 80 + 0 896 82 + 0 896 85

For highly frequented areas, requiring important mechanical resistance  
Indoor installation  
Conform to standard IEC/EN 60-670

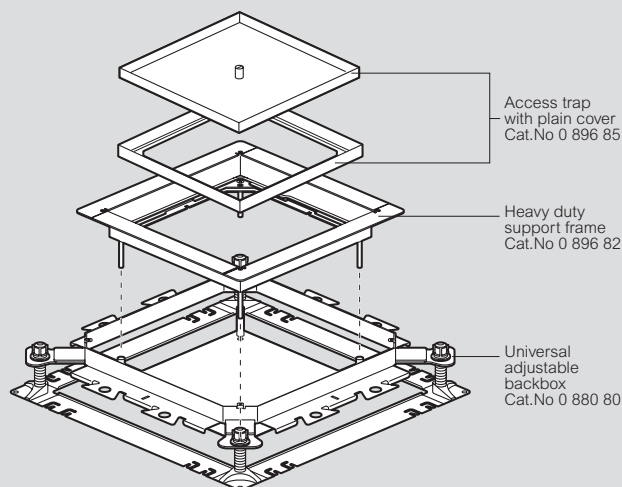
Pack	Cat.Nos	Universal adjustable backbox for concrete floor	
1	0 880 80	Screed height: 105 to 125 mm Supplied with 2 foam blocks (for height adjustment) Height can be extended up to 165 mm with the help of height extension feet Cat.No 0 880 86 and of additional blocks of foam Cat.No 0 880 88	
1	0 880 86	Kit of 4 height extension feet for universal adjustable backbox Cat.No 0 880 80	
1	0 880 88	Block of foam for height extension for universal adjustable backbox Cat.No 0 880 80	
1	0 896 82	Heavy duty support frame, 12.5 kN Allow integration of heavy duty floor box Cat.No 0 896 86 and access traps for junction Cat.No 0 896 85 into the universal adjustable backbox Cat.No 0 880 80	
1	0 896 86	IP 40 Plate with central cable exit Can take up 24 Mosaic modules Supplied with all necessary wiring accessories supports To be installed in universal adjustable backbox for concrete floor Cat.No 0 880 80 with the help of heavy duty support frame Cat.No 0 896 82	
1	0 896 87	Cable exit accessory for heavy duty floor box Cat.No 0 896 86	
1	0 896 85	Access trap for junction, no cable exit To be installed in universal adjustable backbox for concrete floor Cat.No 0 880 80 with the help of heavy duty support frame Cat.No 0 896 82	

## Heavy duty in-screed floor box

### Metal in-screed floor box, installation principle

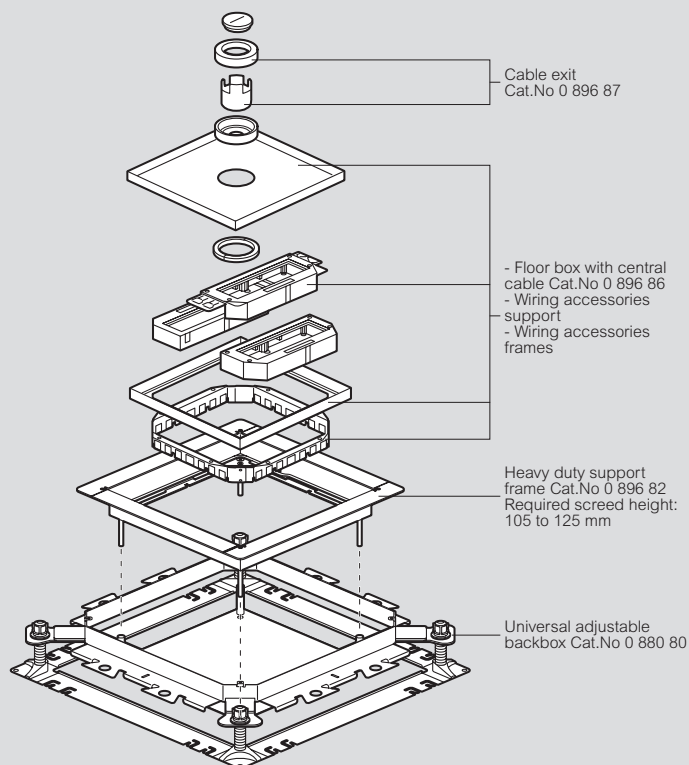
When used as junction box

Junction box with plain cover Cat.No 0 896 85



When used as floor box for wiring accessories

Floor box with central cable Cat.No 0 896 86



Height extension of the universal adjustable backbox

Cat.Nos 0 880 80 + 0 880 86 + 0 880 88

