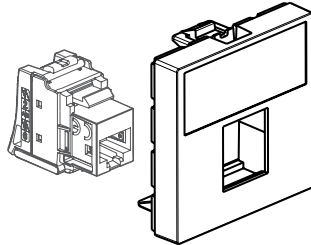
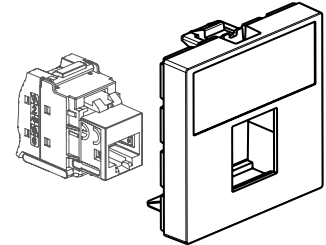


6 329 03/04 (UTP)



6 329 02 (FTP)



6 329 01 (STP)

1. USE

Linkeo C socket outlet adaptor (45x45) and RJ 45 connectors. Supplied in box of 10 socket outlet adaptors and 10 RJ 45 connectors.

Socket outlet adaptor:

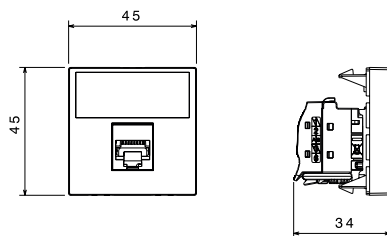
- 2 modules, 1 port taking 1 Keystone format Linkeo C connector.
- Its marking area makes it easy to identify the computer network.
- Available for connectors in categories 6_A STP, 6 FTP, 6 UTP and 5e UTP.
- Installation : for snap-on trunking and column offers, desktop and under-desk multi-outlet ranges, floor, flush and surface mounting boxes.

2. RANGE

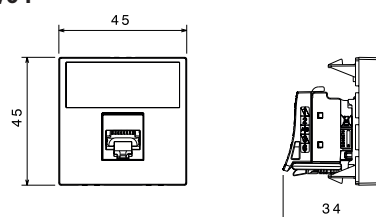
Description	Cat.No	Weight (g)
Set of 10 socket outlet adaptors and 10 Cat 6 _A STP RJ45 connectors	6 329 01	331
Set of 10 socket outlet adaptors and 10 Cat 6 FTP RJ45 connectors	6 329 02	157.2
Set of 10 socket outlet adaptors and 10 Cat 6 UTP RJ45 connectors	6 329 03	156
Set of 10 socket outlet adaptors and 10 Cat 5e UTP RJ45 connectors	6 329 04	159

3. DIMENSIONS (MM)

6 329 01



6 329 02/03/04



4. SOCKET OUTLET ADAPTOR TECHNICAL CHARACTERISTICS

■ 4.1 Material characteristics

Cover plate: White RAL 9003 ABS
 Halogen-free
 UV-resistant
 Self-extinguishing: 650°C/30 s

■ 4.2 Mechanical characteristics

Protection against impacts: IK 03
 Ingress of solids/liquids: IP 20

■ 4.3 Climate characteristics

Usage temperature: -10°C to +60°C
 Storage temperature: -10°C to +70°C
 Humidity: 5% to 85% (non-condensing)

5. CONNECTOR TECHNICAL CHARACTERISTICS

■ 5.1 Material characteristics

- Contacts: Bronze, nickel/gold coating, minimum gold thickness 0.8 µm
- Nickel/bronze
- Polycarbonate
- Shielding (STP version): ZAMAK metal alloy, copper/nickel coating

■ 5.2 Electrical characteristics

Breakdown voltage: 1000 V
 Contact resistance: 20 mΩ
 Insulation resistance: 500 MΩ at 100 VDC
 Compatible with "PoE" remote power supply

■ 5.3 Mechanical characteristics

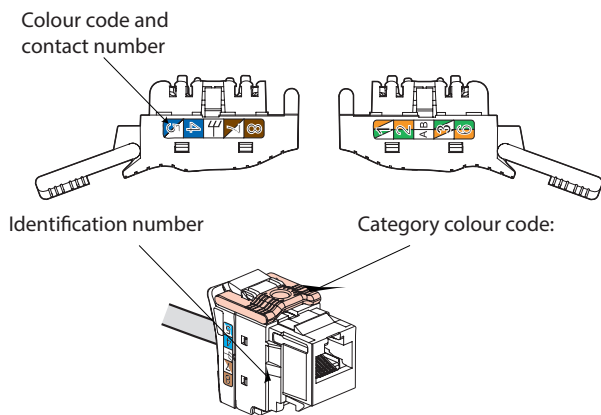
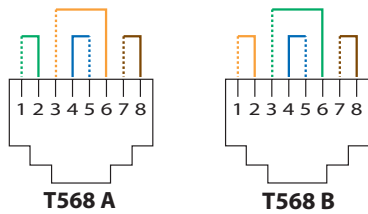
Maximum number of connection/disconnection operations: 5.
 Endurance: 2500 operations (plug insertion/removal)
 IK03
 IP20

■ 5.4 Climate characteristics

Usage temperature: -10°C to +60°C
 Storage temperature: -10°C to +70°C
 Humidity: 5% to 85% (non-condensing)

6. TYPICAL RJ45 CONNECTION

Takes the following plugs:
 RJ11 (4 contacts), RJ12 (6 contacts), RJ45 (9 contacts).
 T568 A and B dual colour code:
 - UTP (8 contacts)
 - FTP (9 contacts)
 - STP (9 contacts)



Identification numbers

Category	Lock-in device colour	UTP	FTP	STP
Cat 5e	White	LK01		
Cat 6	Light grey	LK51	LK52	
Cat 6 _A	Charcoal grey			LK63

Permissible conductors:

- Solid/Stranded: 0.4 to 0.573 mm, AWG 26 to 23
- Polyethylene conductor insulation: Ø 0.85 to 1.7 mm on insulation

Number of wires to be connected per connection: 1

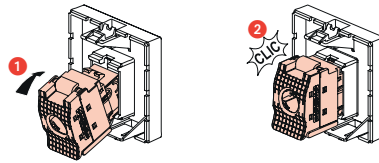
RJ45 connectors are equipped with a locking tab device. This does not require a special tool, so they can be re-terminated if a mistake is made.

7. CARE OF THE SOCKET OUTLET ADAPTOR

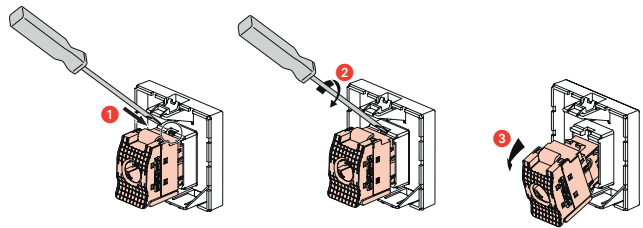
Clean the surface with a cloth.
 Do not use acetone, tar-removing cleaning agents or trichloroethylene.
 Resistant to the following products: Hexane (EN 60669-1), methylated spirit, soapy water, diluted ammonia, bleach diluted to 10%, window-cleaning products, pre-impregnated wipes.

Caution: Always test before using other special cleaning products.

8. MOUNTING THE CONNECTOR



9. REMOVING THE CONNECTOR



10. STANDARDS

- ISO/IEC 11801 series: International standard for generic cabling systems
- ANSI/TIA 568 series: North American standard for generic cabling systems
- EN 50173 series: European standard for generic cabling systems
- IEC 60603-7 series: International specification standard for plugs and bases

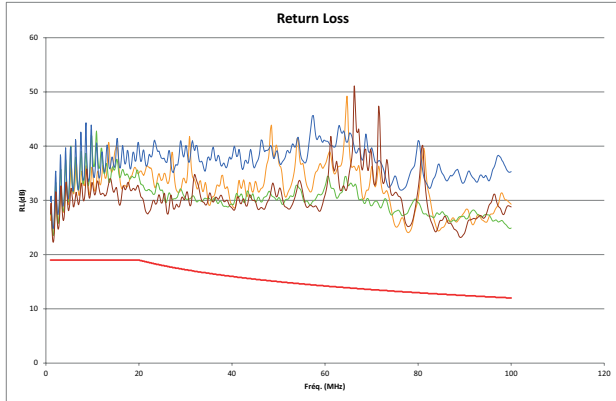
Connectors comply with the requirements of remote power supply applications IEEE 802.3af , IEEE 802.3at , IEEE 802.3bt: "Power over Ethernet" Types 1 to 4, up to 90 W.

11. PERFORMANCES

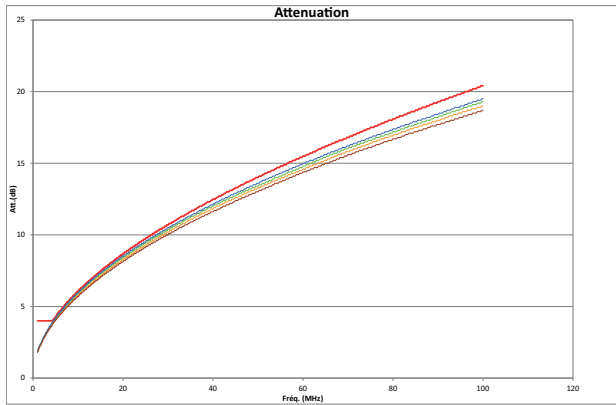
1.1 Permanent link performances with Cat 5e UTP connector and Cat 5e U/UTP cable

The red line represents the limit line of standard.

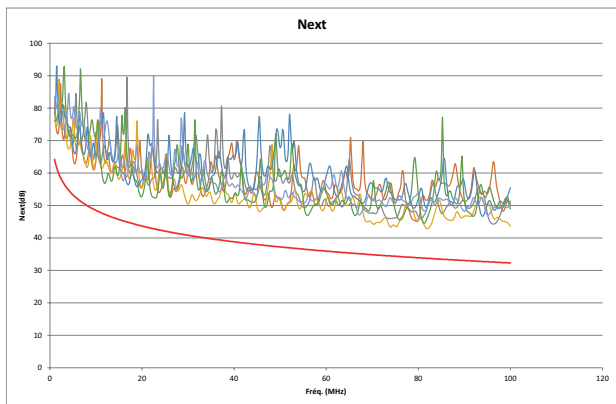
Return loss



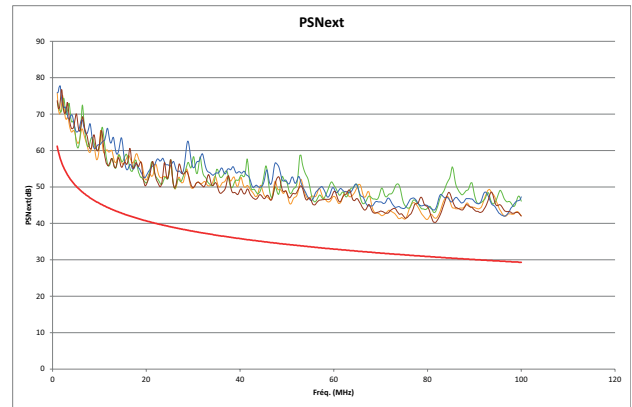
Attenuation



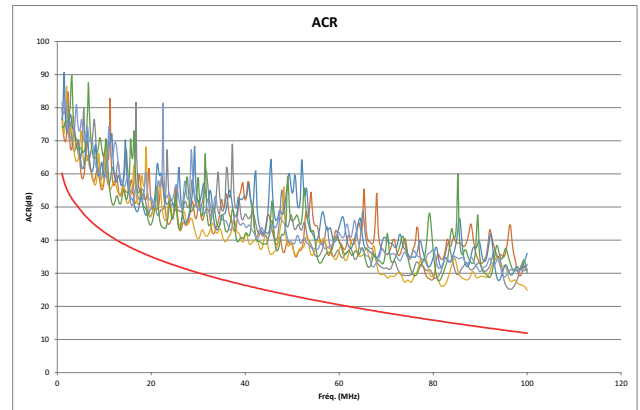
NEXT (Near end Crosstalk Attenuation)



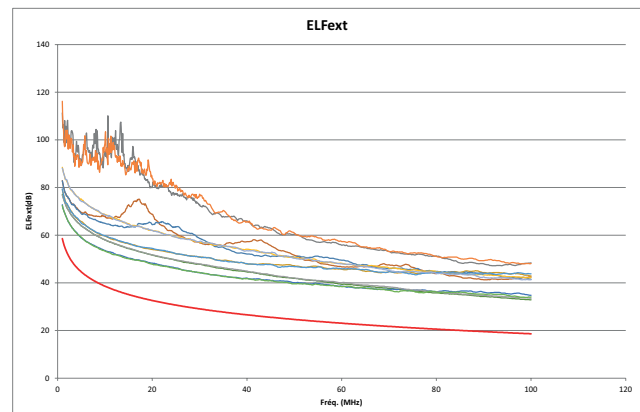
PS NEXT (Power Sum NEXT)



ACR-N



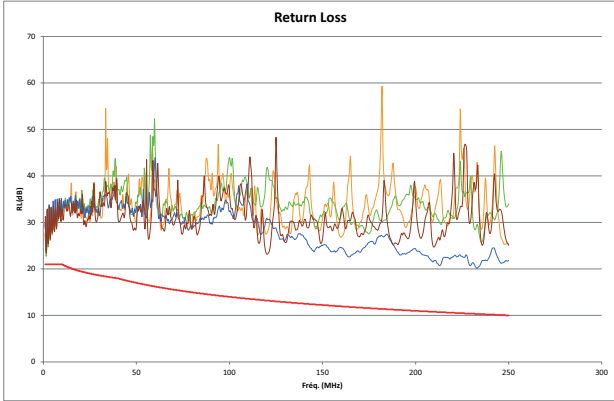
ACR-F



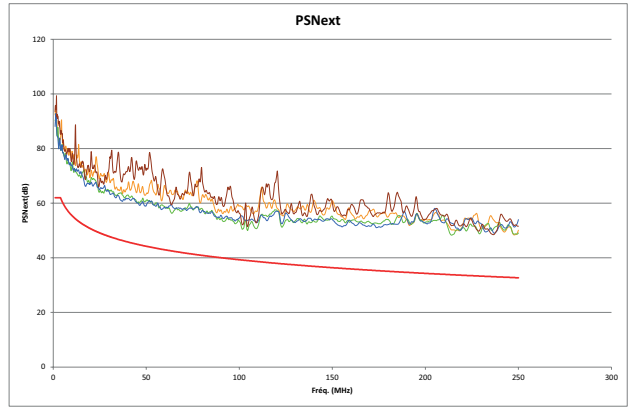
■ 1.2 Permanent link performances with Cat 6 UTP connector and Cat 6 U/UTP cable

The red line represents the limit line of standard.

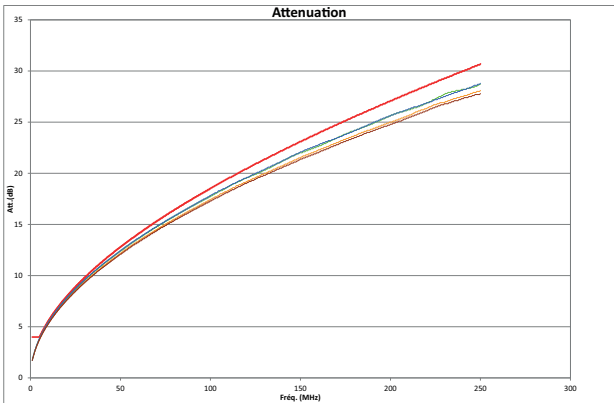
Return loss



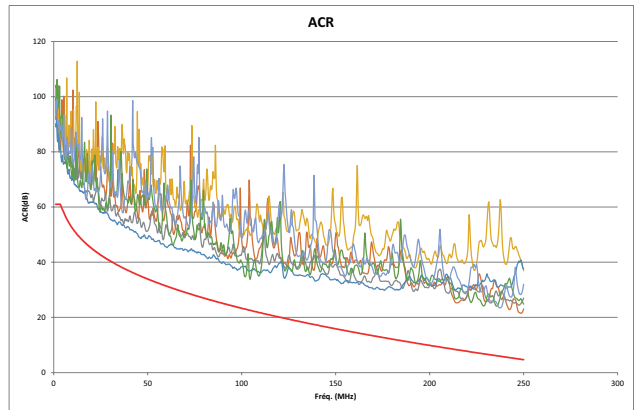
PS NEXT (Power Sum NEXT)



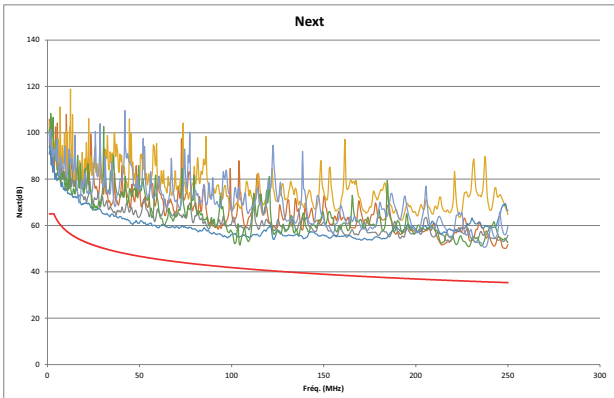
Attenuation



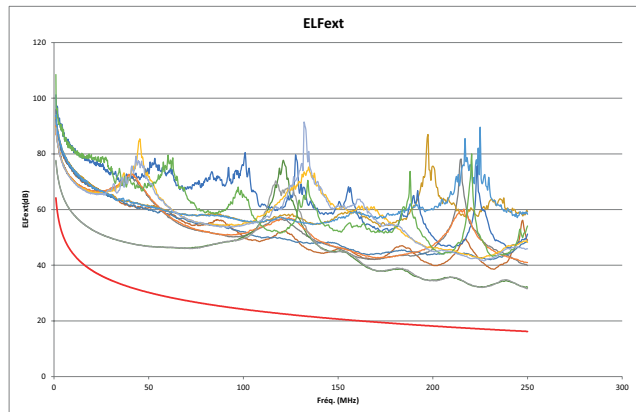
ACR-N



NEXT (Near end Crosstalk Attenuation)



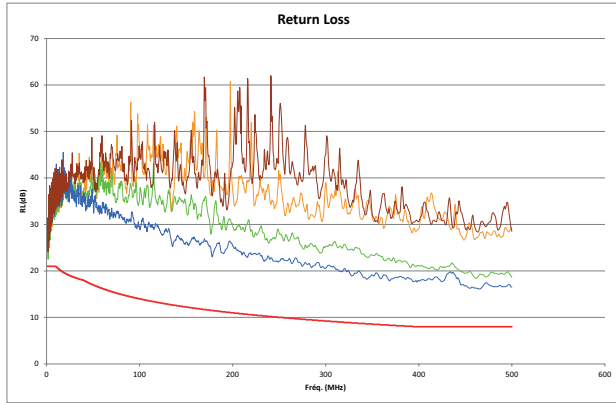
ACR-F



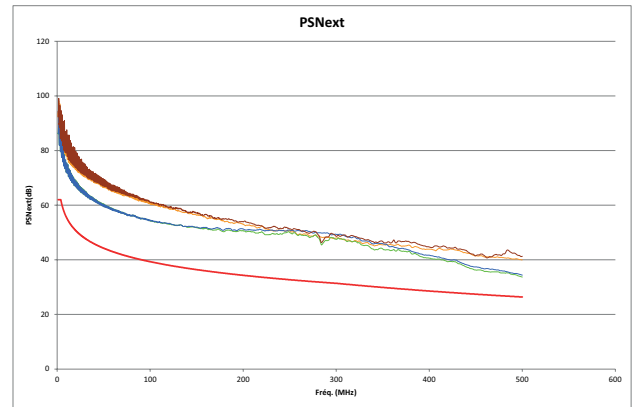
1.3 Permanent link performances with Cat 6_A STP connector and Cat 6_A U/FTP cable

The red line represents the limit line of standard.

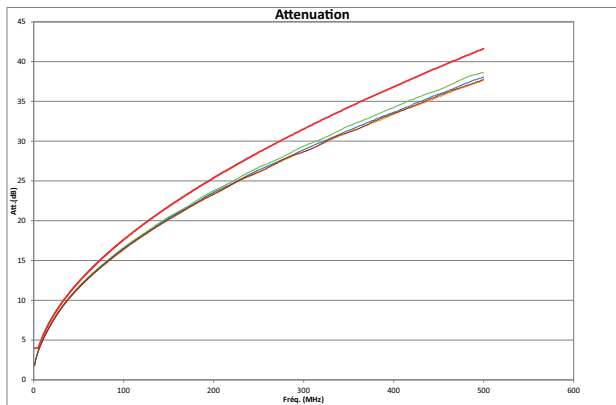
Return loss



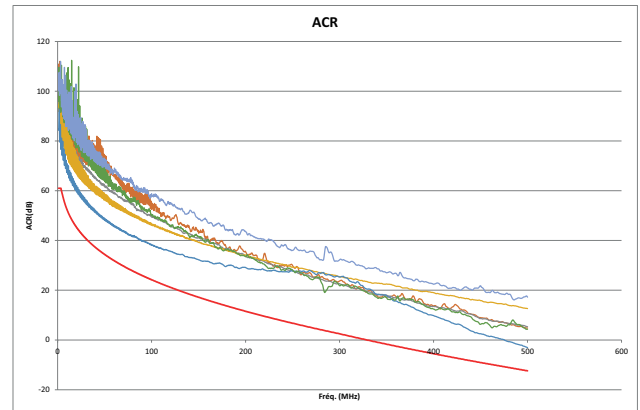
PS NEXT (Power Sum NEXT)



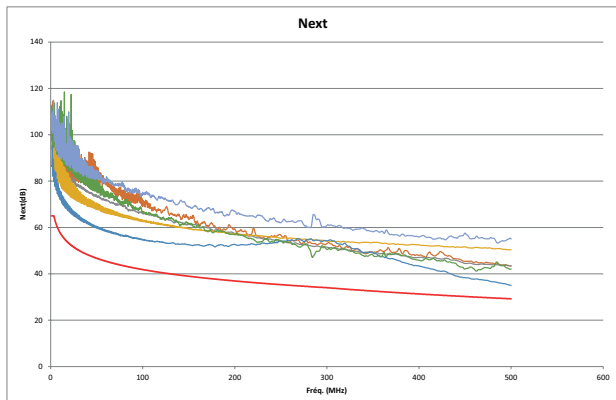
Attenuation



ACR-N



NEXT (Near end Crosstalk Attenuation)



ACR-F

