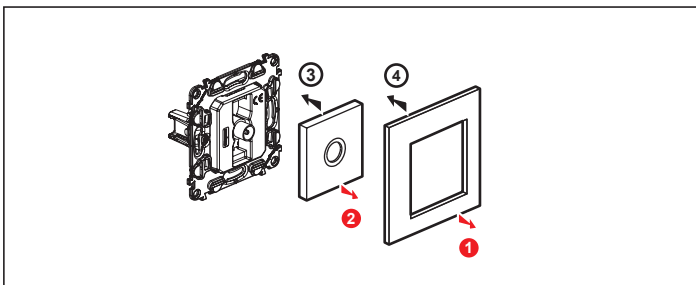


7 534 51 / 60 / 61
7 535 51 / 60 / 61
7 536 51 / 60 / 61

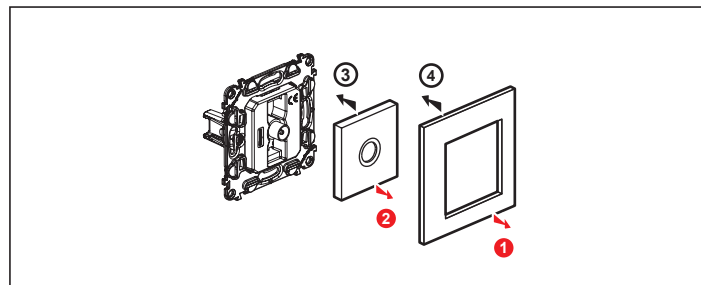
7 534 58 / 62 / 63 / 64
7 535 58 / 62 / 63 / 64
7 536 58 / 62 / 63 / 64

7 534 51, 7 535 51, 7 536 51

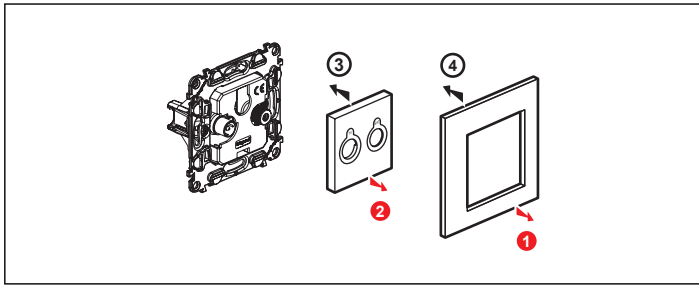


Z	Control	Return Path	Channel 1	Channel FM	Channel VHF	Channel UHF	Channel SAT (IF)
75 Ω	500 mA	4 - 30 MHz	47 - 68 MHz	87,5 - 108 MHz	120 - 470 MHz	470 - 862 MHz	950 - 2400 MHz

7 534 60 / 61, 7 535 60 / 61, 7 536 60 / 61



Z	Control	Return Path	Channel 1	Channel FM	Channel VHF	Channel UHF	Channel SAT (IF)
75 Ω	500 mA	4 - 30 MHz	47 - 68 MHz	87,5 - 108 MHz	120 - 470 MHz	470 - 862 MHz	950 - 2150 MHz



Z	Control	Return Path	Channel 1	Channel FM	Channel VHF	Channel UHF	Channel SAT (IF)	
75 Ω	500 mA	22 kHz 0,6 V	4 - 30 MHz	47 - 68 MHz	87,5 - 108 MHz	120 - 470 MHz	470 - 862 MHz	950 - 2400 MHz
7 534 58 7 535 58 7 536 58	1,5 dB				1,5 dB			2 dB
7 534 62 7 535 62 7 536 62	1,5 dB				10 dB			
7 534 63 7 535 63 7 536 63					14 dB			
7 534 64 7 535 64 7 536 64	1,5 dB				1,5 dB			2 dB

TV-SAT	Receiver Model	Diagram	Diagram
	7 534 58 7 535 58 7 536 58		
	7 534 62 7 535 62 7 536 62		
	7 534 63 7 535 63 7 536 63		
	7 534 64 7 535 64 7 536 64		