

STOP&GO automatic resetting for DX³

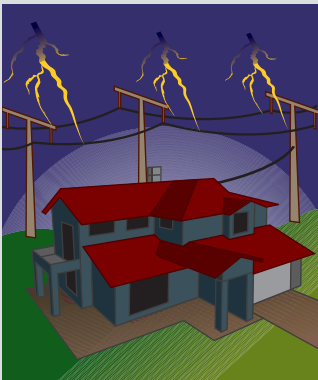
Temporarily electrical disturbances and other external events can cause unwanted tripping of different devices protecting electrical installation

STOP&GO verifies automatically the state of the installation, before resetting and launches a visual and audible alarm signal in case of permanent fault detection (short-circuit or residual current)

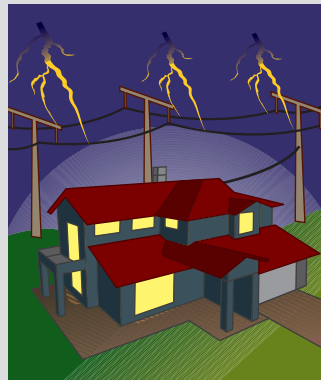
After verifying the state of the installation, STOP&GO automatic resets the associated protection device in order to immediately re-establish power supply and avoid unwanted consequences

STOP&GO does not protect the installation against lightning strikes
For an efficient protection against lightning, use voltage surge protectors

The Autotest version is specially suitable for installations equipped with residual current protection devices (RCD's and RCBOs)
STOP&GO periodically does an automatic test of the functioning of residual current protection devices. The manual test is no longer needed

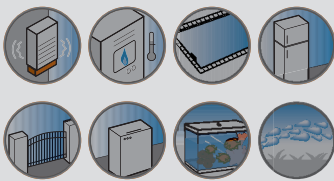


Installation without STOP&GO

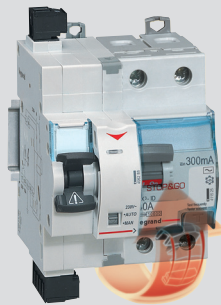


Installation with STOP&GO

Mains fault due to temporarily electrical disturbances
Electrical devices are not powered anymore

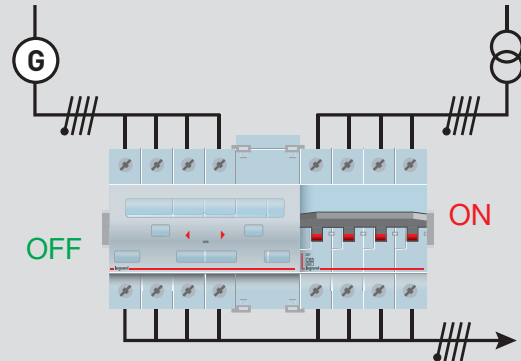


STOP&GO automatic resets the associated protection device in order to immediately re-establish power supply

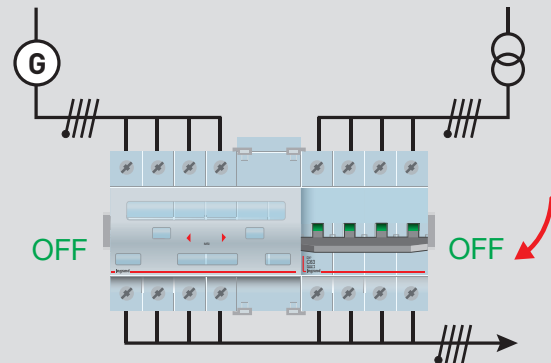


Manual changeover switches for DX³

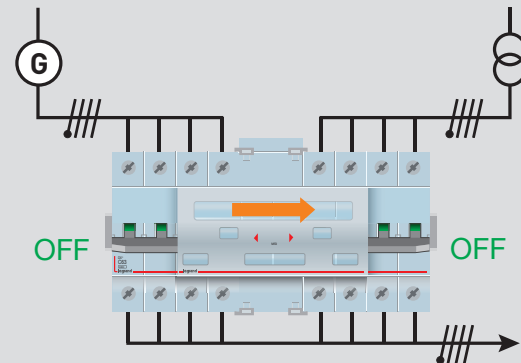
1- The power is on the general network
The MCB behind the window, connected to the generator is on the OFF position



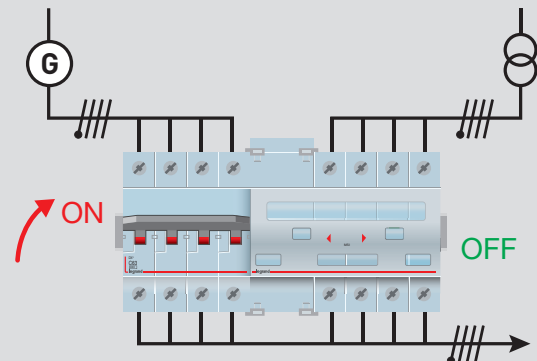
2- Switch OFF the main MCB



3- Slide the window in order to change the power supply



4- Switch ON the MCB connected to the generator



Front external rotary handles

■ Example of mounting on a DX³ MCB

