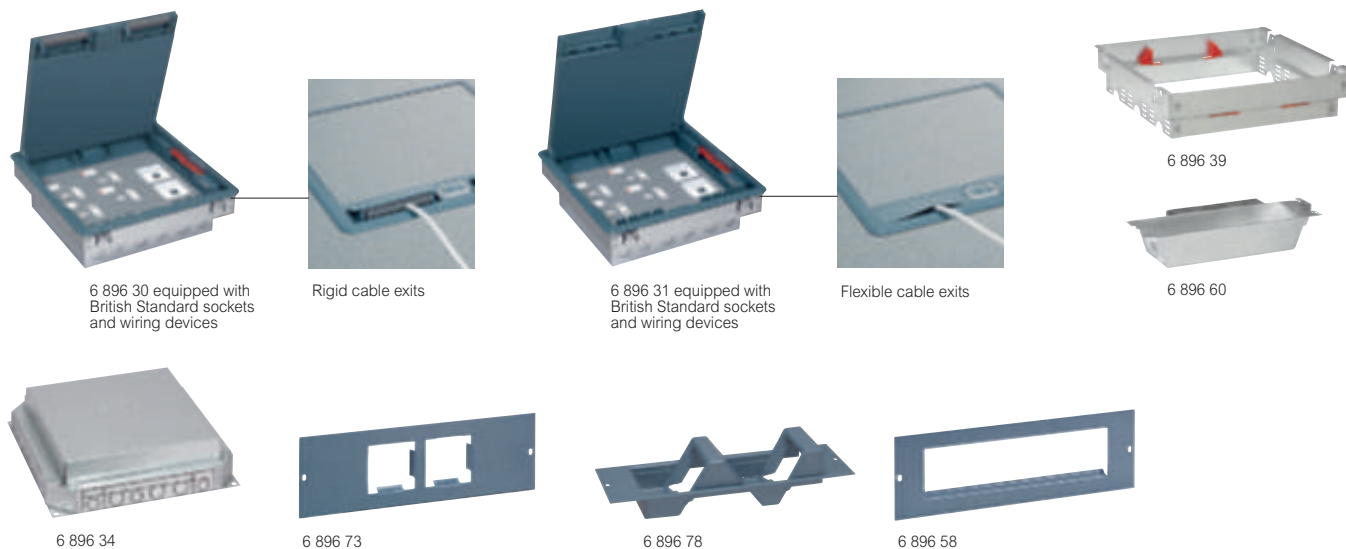


# Floor boxes for carpet



Technical characteristics **see e-catalogue**

Conform to IEC/EN 60670-23  
Compatible with either raised access floor trunking system and screed floor system

Pack	Cat.Nos	Lid and trims for carpet
		To be equipped with Arteor wiring accessories Supplied with flexible or rigid cable exits
		<b>3-compartment floor boxes</b> To be filled on either - modular backbox for raised floors Cat.No 6 896 39 - screed floor backbox Cat.No 6 896 34
5	6 896 30	Grey cover RAL 7031 with rigid cable exits
5	6 896 31	Grey cover RAL 7031 with flexible cable exits
		<b>4-compartment floor boxes</b> To be filled on either - modular backbox for raised floors Cat.No 6 896 49 - screed floor backbox Cat.No 6 896 45
5	6 896 40	Grey cover RAL 1019 with rigid cable exits
5	6 896 41	Grey cover RAL 1019 with flexible cable exits

Pack	Cat.Nos	Modular backbox for raised floors
		Adjustable height between 86 to 107 mm To be fitted with lid and trims for carpet and support plates for Arteor or Mosaic Programme wiring accessories (p. 465 and 887) Backboxes are connected to the raised floor trunking system with flexible conduits One complete assembly consists of: support frame + modules + lid and trim
		<b>Support frame</b> To be equipped with modules below
1	6 896 39	3 compartments (264 x 264 mm)
1	6 896 49	4 compartments (264 x 341 mm)
		<b>Module</b>
4	6 896 60	Single module for 77 mm plates

Pack	Cat.Nos	Screed floor backboxes
		To be fitted with lid and trim for carpet and support plates for Arteor mechanisms Accept PVC and metal screed floor ducting and conduits Ø20 mm and Ø25 mm Auto-adjustable to screed height 65 up to 90 mm
		<b>For ducting up to 225 mm</b>
1	6 896 34	3 compartments
		<b>For ducting up to 300 mm</b>
1	6 896 45	4 compartments
		<b>Support plates for Arteor or Mosaic Programme mechanism</b> Support plates for integration of Arteor or Mosaic Programme mechanisms in floor boxes
		<b>Flat support plates</b> Width: 77 mm
12	6 896 73	For 4 modules (2 x 2 modules)
12	6 896 74	For 6 modules (3 x 2 modules)
12	6 896 77	For 6 modules (2 x 3 modules)
12	6 896 58	For 8 modules
		<b>Waved support plates for data sockets</b> For 4 modules (2 x 2 modules) Width: 77 mm