

Access control stand-alone keypads and badge readers



0 778 76

0 767 51

0 778 72



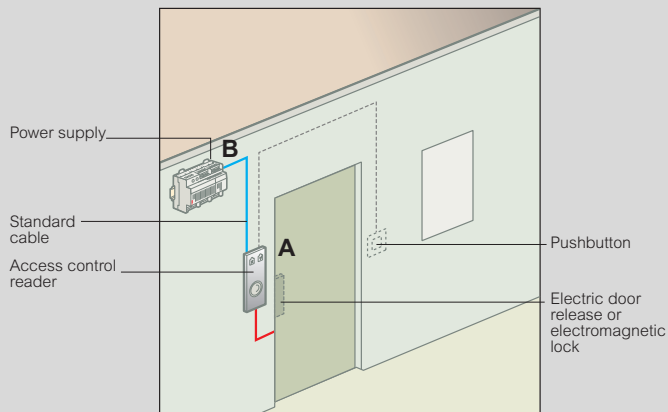
0 767 10

All readers have indicators and a buzzer to indicate the door status

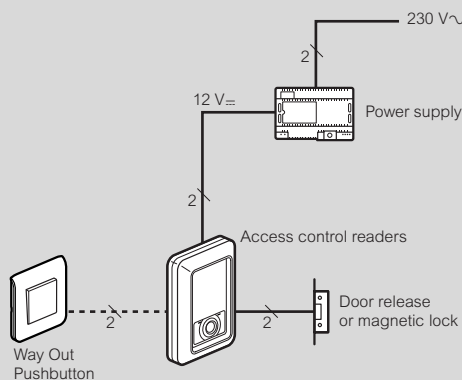
Pack	Cat.Nos	Soliroc external coded keypads
1	0 778 76	Soliroc external coded keypad Backlit buttons 100 user codes in stand-alone mode Surface-mounting, cable outlet 1 self-protection contact (pull-out + opening) 1 pushbutton input for internal unlocking 1 relay output for door release or electromagnetic lock Power supply 12/24 V~/=
1	0 767 51	Without pushbutton Consumption 80 mA at 12V= IP 55 - IK 10
1	0 767 51	Consumption 40 mA at 12V= IP 65 - IK 07
1	0 778 72	Soliroc external badge readers Surface-mounting, cable outlet 500 user badges in stand-alone mode 1 self-protection contact (pull-out + opening) 1 pushbutton input for internal unlocking 1 relay output for door release or electromagnetic lock Power supply 12/24 V~/=
1	0 767 52	Backlit detection area Consumption 80 mA at 12V= IP 55 - IK 10
1	0 767 52	Consumption 60 mA at 12V= IP 65 - IK 07
5	0 767 10	Soliroc external badge readers MIFARE contactless badge key fob 13.56 MHz With customisable tab included
10	0 767 11	MIFARE contactless badge card ISO format (50 x 80 mm) Chip: 13.56 MHz Standard 1 KB memory
1	0 767 18	Protected power supply 12 V= - 4 A power supply Backed up by 12 V - 7 Ah battery Cat.No 0 407 49 (not supplied)

Access control stand-alone

Installation principle in stand-alone mode



Wiring principle



Selection guide

		Risk level	Door opening to:
			Outside
A	Readers	Coded keypad	0 778 76 0 767 51
		Badge reader	0 778 72 0 767 52
		Fingerprint reader	-
B	Power supply		0 767 18 + 0 407 49 ⁽¹⁾

1: The choice of the type of power supply, with or without battery, determines whether the door will open when there is a mains failure